

PBSS5140T

Rev.F Apr.-2017

/ Descriptions

JF K\$) * GE G` Silicon PNP transistor in a SOT-23 Plastic Package.

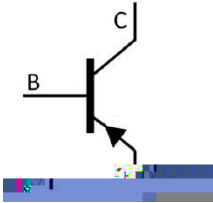
/ Features

Low $V_{CE(sat)}$, high current.

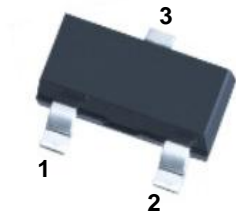
/ Applications

General purpose switching and muting, LCD back-lighting, supply line switching circuits.

/ Equivalent Circuit



/ Pinning



PIN 1 Base PIN 2 Emitter PIN 3 Collector

/ h_{FE} Classifications & Marking

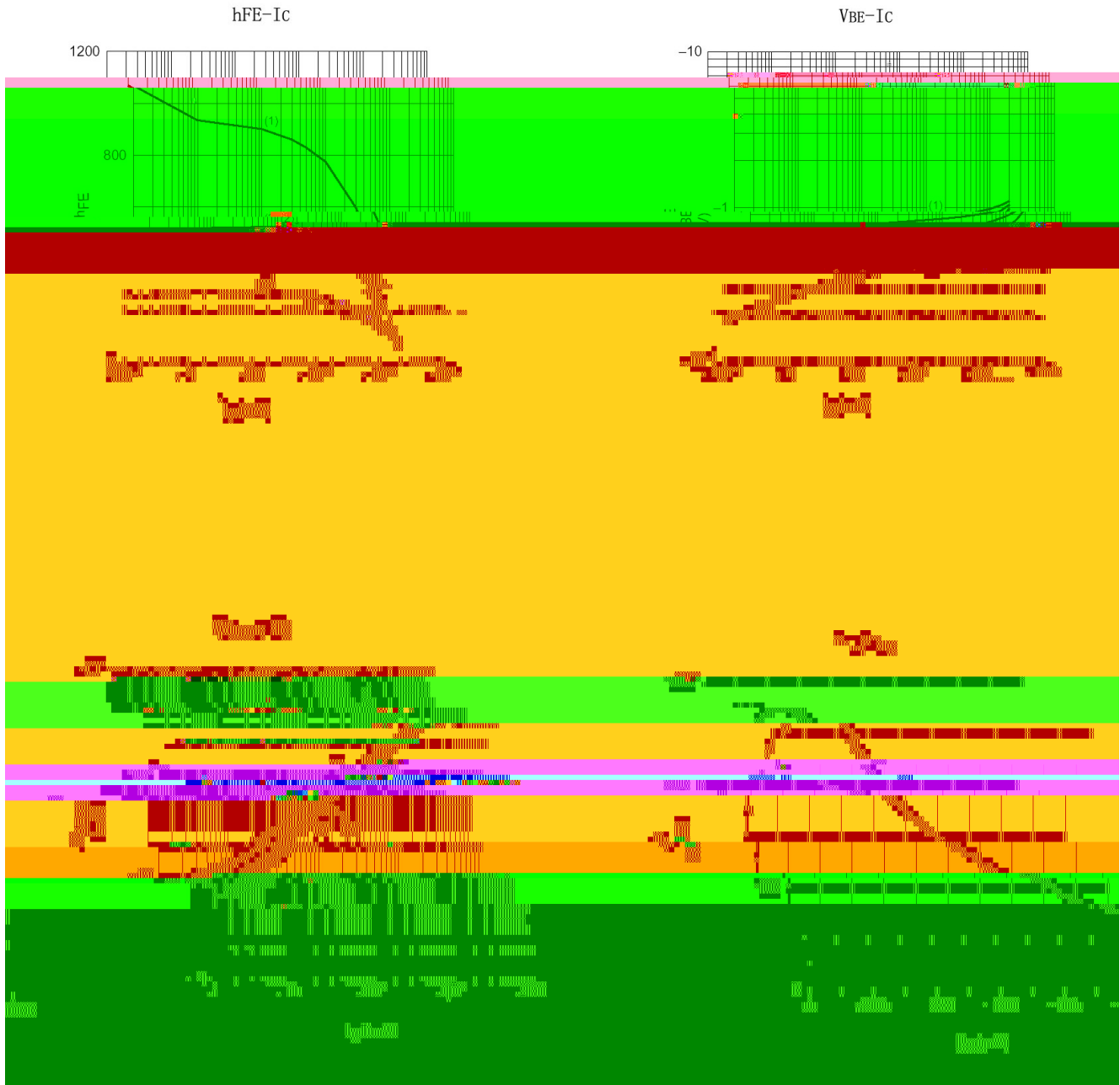
h_{FE} Range	300 800
Marking	HP2H

PBSS5140T

Rev.F Apr.-2017

Parameter	Symbol	Rating	Unit
Collector to Base Voltage	V_{CBO}	-40	V
Collector to Emitter Voltage	V_{CEO}	-40	V
Emitter to Base Voltage	V_{EBO}	-5.0	V
Collector Current	I_C	-1.0	A
peak collector current	I_{CM}	-2.0	A
peak base current	I		

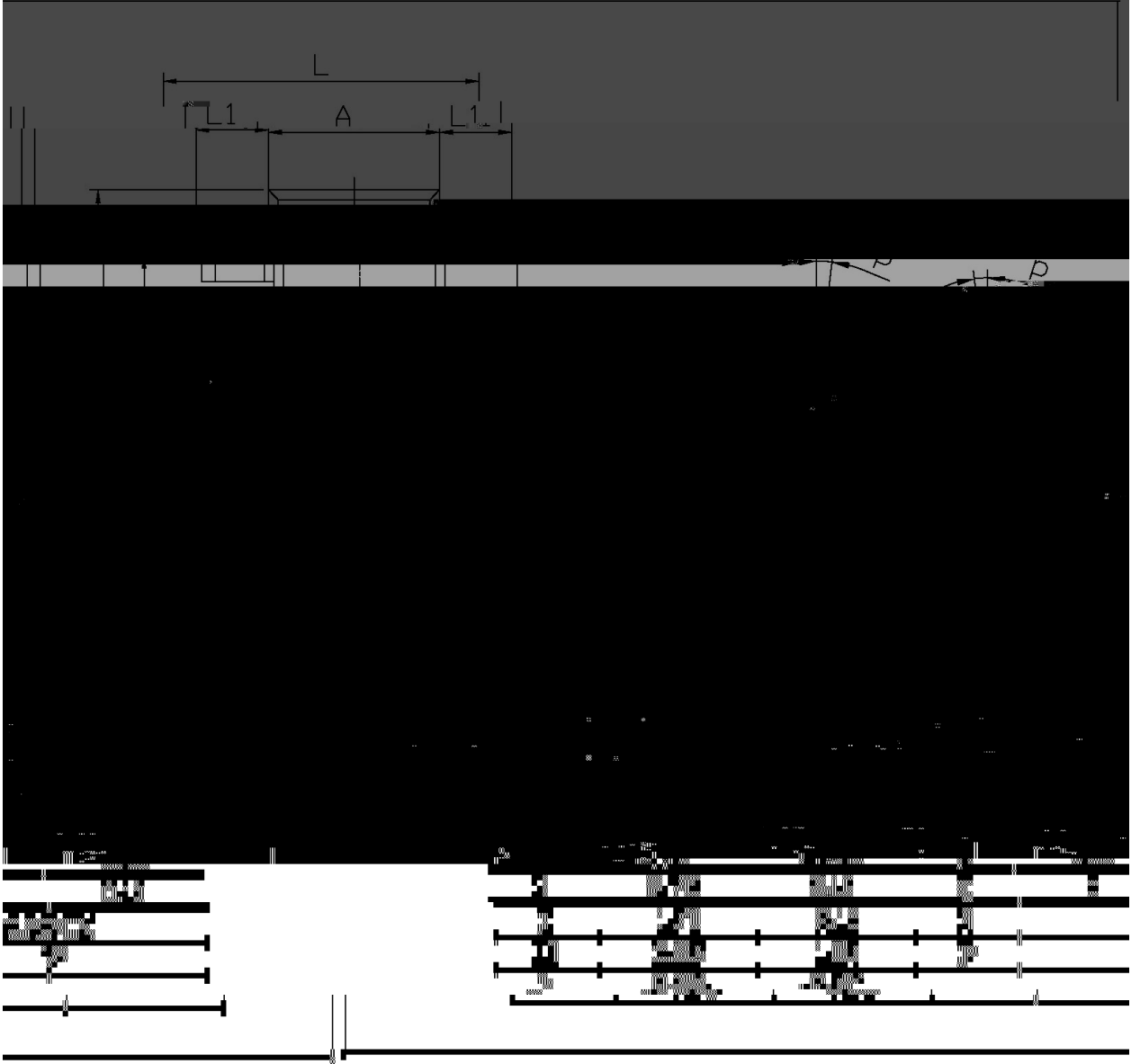
/ Electrical Characteristic Curve



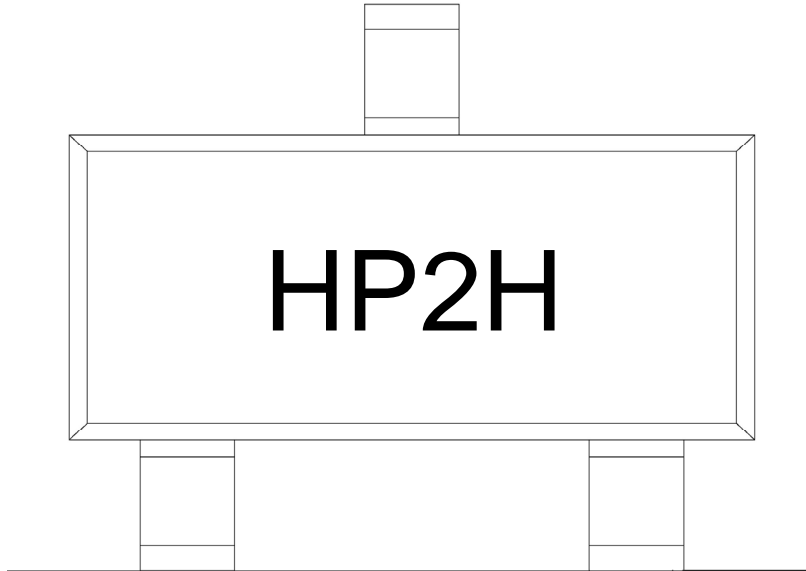
/ Package Dimensions

SOT 23

单位: mm

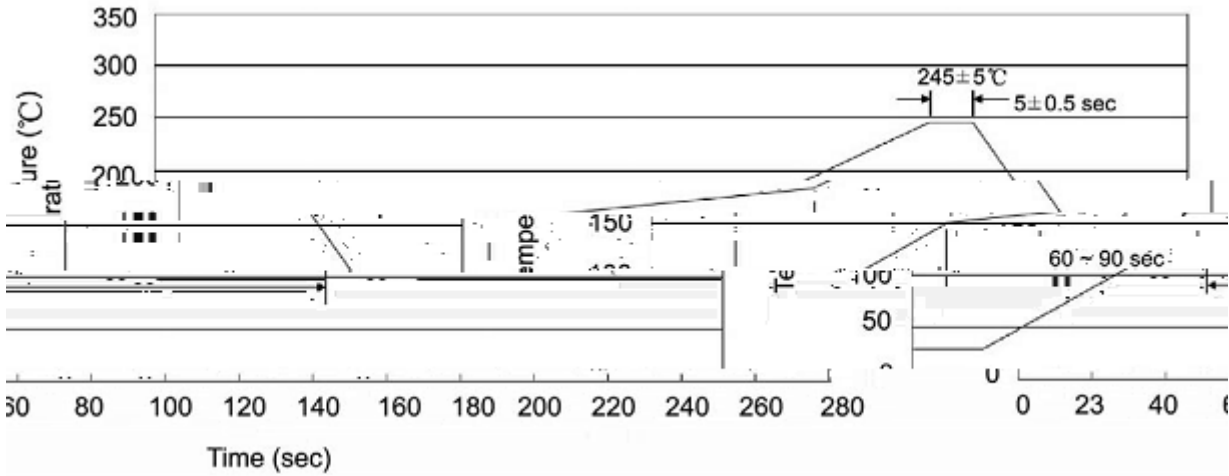


/ Marking Instructions



?
P2H
Note:
? Company Code
P2H Product Type

() / Temperature Profile for IR Reflow Soldering(Pb-Free)



Note:

- | | | | | | |
|---|--------|-----|------------|----------|---|
| 1 | 25 | 150 | 60 | 90sec; | 1.Preheating:25~150 , Time:60~90sec. |
| 2 | 245..5 | | 5..0.5sec; | | 2.Peak Temp.:245..5 , Duration:5..0.5sec. |
| 3 | | | 2 | 10 /sec. | 3. Cooling Speed: 2~10 /sec. |

/ Resistance to Soldering Heat Test Conditions

260..5 10..1 sec. Temp.:260±5 Time:10±1 sec

/ Packaging SPEC.

/ REEL

Package Type	Units					Dimension (unit mm ³)		
	Units/Reel	Reels/Inner Box	Units/Inner Box	Inner Boxes/Outer Box	Units/Outer Box	Reel	Inner Box	Outer Box
SOT-23	3,000	10	30,000	6	180,000	7 ×8	180×120×180	390×385×205