

/ Descriptions

SOT-23 NPN Silicon NPN transistor in a SOT-23 Plastic Package.

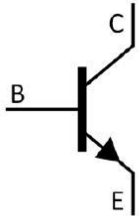
/ Features

Complementary pair with MMBTA92
High voltage, Low saturation voltage, low collector capacitance output, complementary pair with MMBTA92.

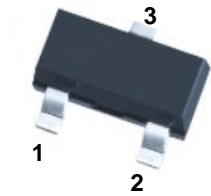
/ Applications

High voltage control circuit.

/ Equivalent Circuit



/ Pinning



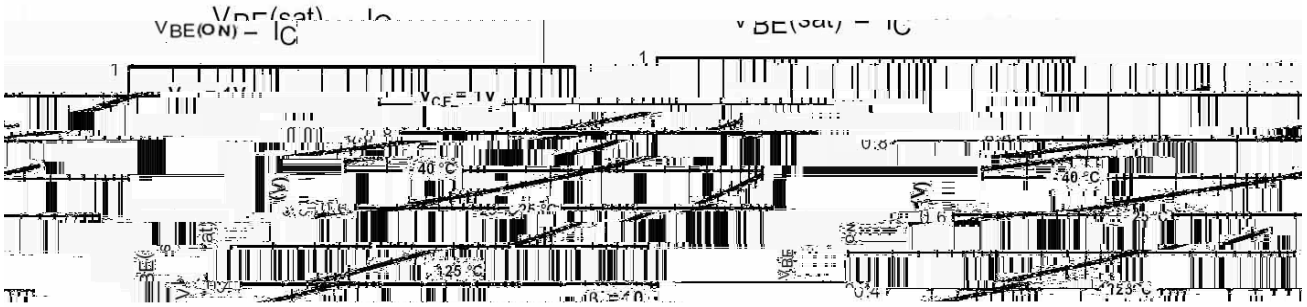
PIN1 Base PIN 2 Emitter PIN 3 Collector

/ Marking

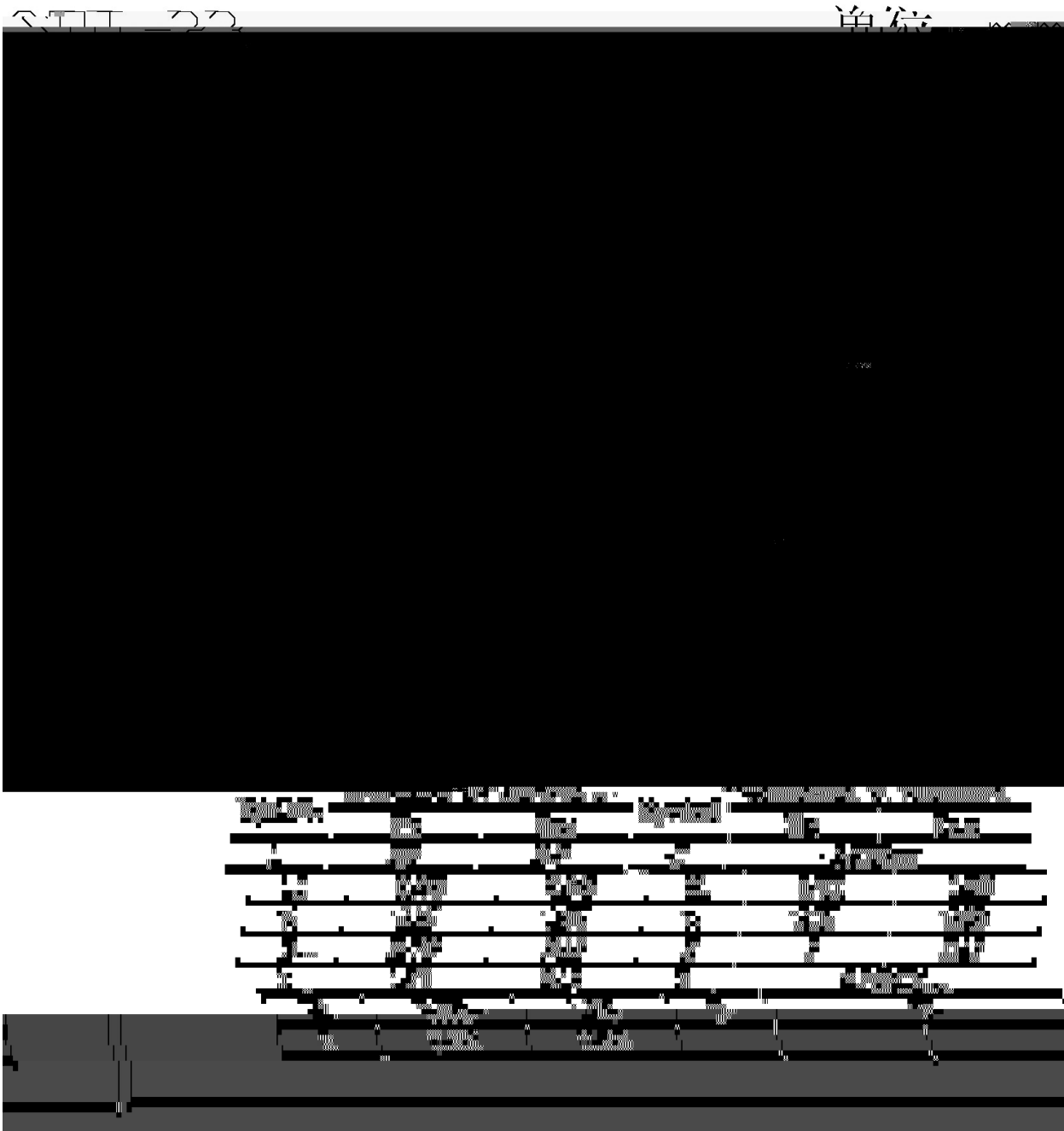
h_{FE} Range	>40
Marking	H1D

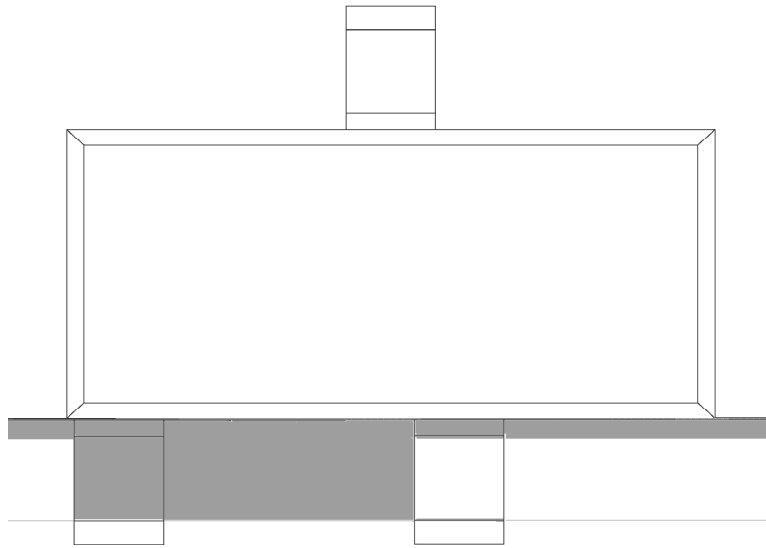
Parameter	Symbol	Rating	Unit
Collector to Base Voltage	V_{CBO}	300	V
Collector to Emitter Voltage	V_{CEO}	300	V

/ Electrical Characteristic Curve

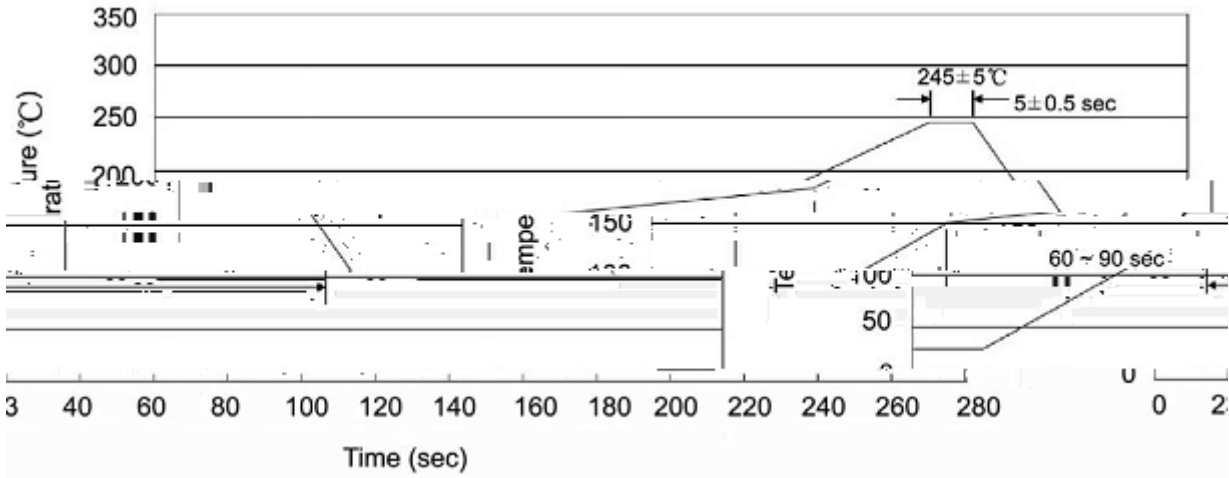


/ Package Dimensions





() / K\d g\iXk i\Gif]Δ]fi@ I\]fn Jfd \i'e^ZGYS=i\ž



Note:

- | | | | | | |
|---|-------|-----|-------|--------|-----------------------------------------|
| 1 | 25 | 150 | 60 | 90sec; | 1.Preheating:25~150 , Time:60~90sec. |
| 2 | 245±5 | | 5±0.5 | sec; | 2.Peak Temp.:245±5 , Duration:5±0.5sec. |
| 3 | | 2 | 10 | /sec. | 3. Cooling Speed: 2~10 /sec. |

/ Resistance to Soldering Heat Test Conditions

260±5 10±1 sec. Temp.:260±5 Time:10±1 sec

/ Packaging SPEC.

/ REEL

Package Type	Units					Dimension (unit mm ³)		
	Units/Reel	Reels/Inner Box	Units/Inner Box	Inner Boxes/Outer Box	Units/Outer Box	Reel	Inner Box	Outer Box
SOT-23	3,000	10	30,000	6	180,000	7 ×8	180×120×180	390×385×205

/ Notices