

# MBRJ10100CT

Rev.E Mar.-2016

## / Descriptions

TO-220S

Schottky diode in a TO-220S Plastic Package.

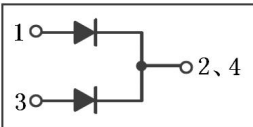
## / Features

Low power loss, high efficiency.

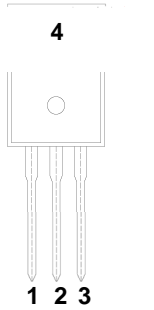
## / Applications

For high frequency, high voltage, high current rectifier diode, freewheeling diode.

## / Equivalent Circuit



## / Pinning



PIN1 Anode

PIN 2 Cathode

PIN 3 Anode

PIN 4 NC

## / h<sub>FE</sub> Classifications & Marking

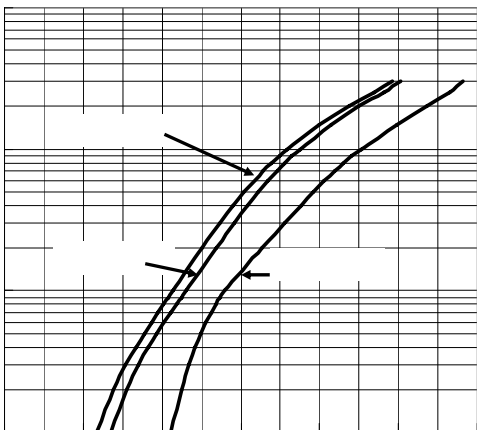
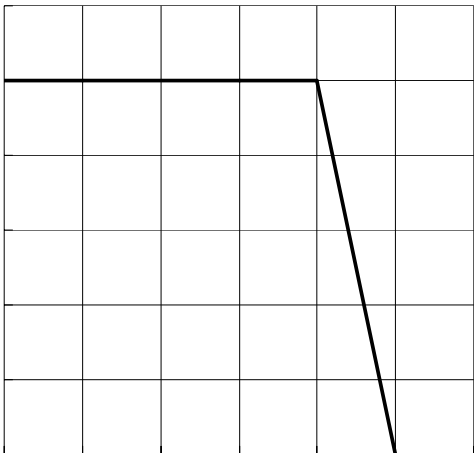
See Marking Instructions.

# MBRJ10100CT

Rev.E Mar.-2016

Parameter	Symbol	Rating	Unit
Peak Repetitive Reverse Voltage Working Peak Reverse Voltage Reverse Voltage	$V_{RRM}$ $V_{RWM}$ $V_{RM}$	100	V
RMS Reverse Voltage	$V_{R(RMS)}$	70	V
Average Rectified Forward Current	I		

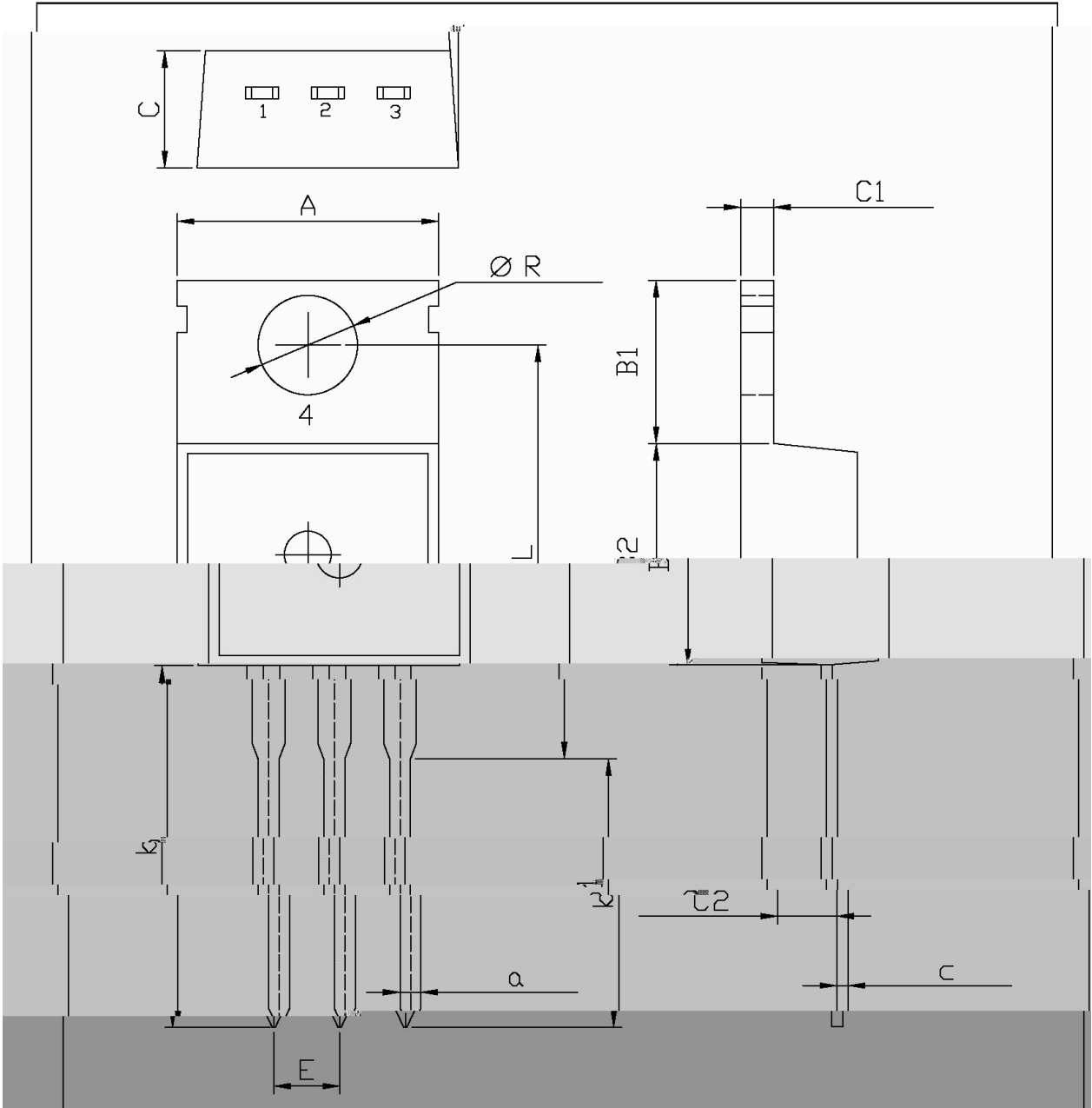
**/ Electrical Characteristic Curve**



**/ Package Dimensions**

TO-220S

Unit: mm

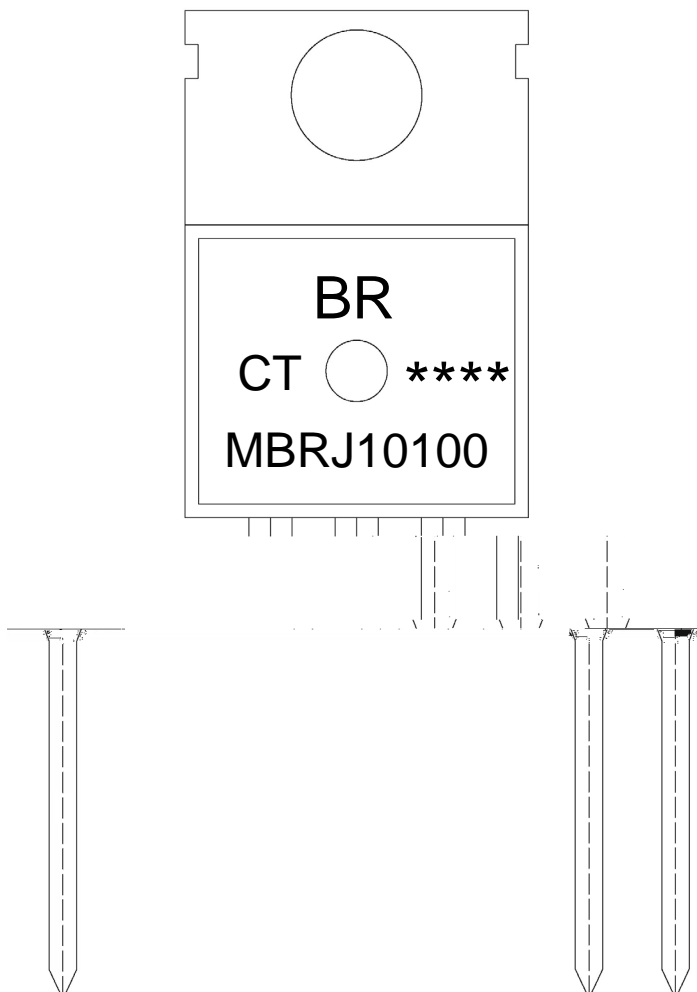


Dimensions in Millimeters			Dimensions in Millimeters		
Symbol	Min	Max	Symbol	Min	Max
A	10.0	11.0	B1	1.5	2.5
B1	1.5	2.5	B2	0.5	1.5
B2	0.5	1.5	C	0.1	0.2
C	0.1	0.2	C1	0.5	1.0
E	0.5	0.7	L	1.5	2.5
L	1.5	2.5	R	0.1	0.2
R	0.1	0.2	a	0.5	0.7
a	0.5	0.7	b	0.5	0.7
b	0.5	0.7	k1	0.5	0.7
k1	0.5	0.7	k2	0.5	0.7
k2	0.5	0.7			

# MBRJ10100CT

Rev.E Mar.-2016

## / Marking Instructions



BR

MBRJ10100

CT:

\*\*\*\*

Note:

BR: Company Code

MBRJ10100 Product Type.

CT: Internal Structure

\*\*\*\*: Lot No. Code, code change with Lot No.

# **MBRJ10100CT**

Rev.E Mar.-2016

**DATA SHEET**