

MBRD10100CT

Rev.H Aug.-2025

/ Descriptions

TO-252

Schottky Diode in a TO-252 Plastic Package.

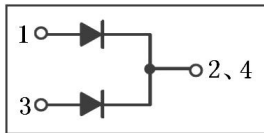
/ Features

Low power loss, high efficiency, HF Product.

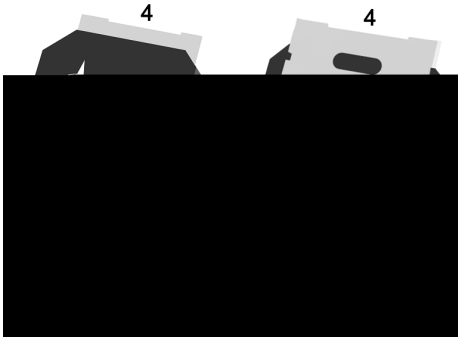
/ Applications

For use in low voltage, high frequency inverters, free wheeling, and polarity protection applications.

/ Equivalent Circuit



/ Pinning



PIN1 Anode

PIN 2,4 Cathode

PIN 3 Anode

/ Marking

See Marking Instructions.

MBRD10100CT

Rev.H Aug.-2025



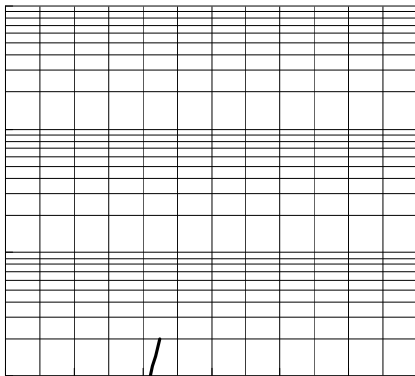
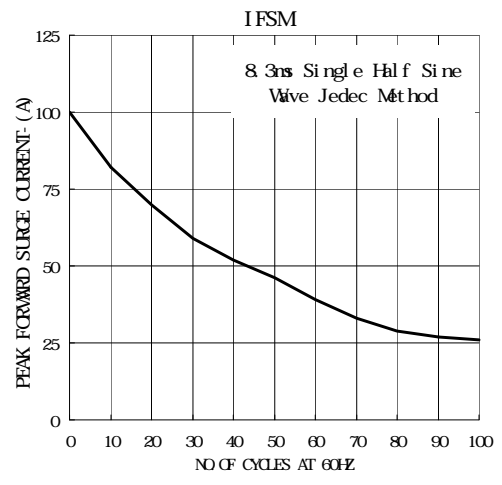
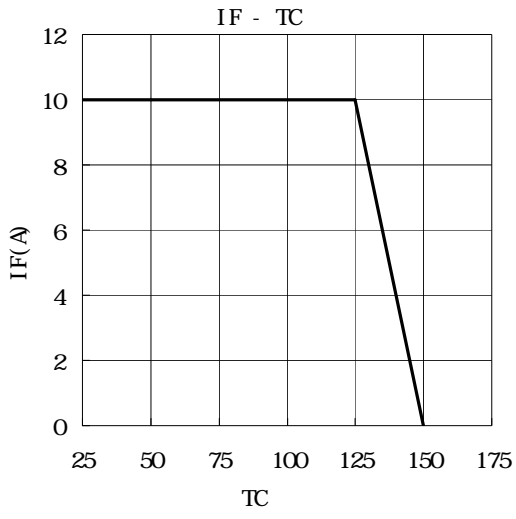
DATA SHEET

Parameter	Symbol	Rating	Unit
Peak Repetitive Reverse Voltage Working Peak Reverse Voltage DC Blocking Voltage	V_{RRM} V_{RWM} V_{RM}	100	V
RMS Reverse Voltage	$V_{R(RMS)}$	70	V
Average Rectified Forward Current	$I_{F(AV)}$	2× 5	A
Non Repetitive Peak Surge Current	I_{FSM}	125	A
Thermal resistance, junction to case	R_{Jc}	6.5	/W
Junction Temperature Range	T_{jMAX}	150	
Storage Temperature Range	T_{stg}	-55 150	

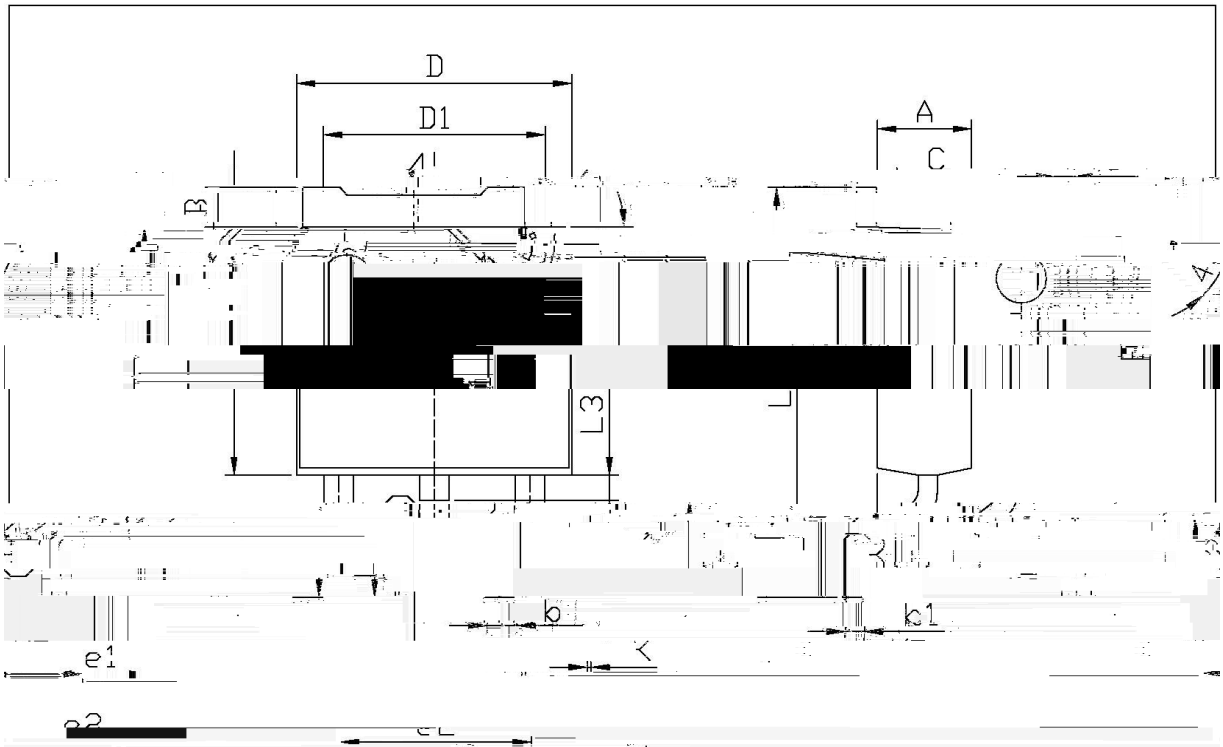
Parameter	Symbol	Test Conditions	Min	Typ	Max	Unit
Reverse Voltage	V_{BR}	$I_R=0.3mA$	100			V
Forward Voltage	V_F	$I_F=5A$ $T_J=25$			0.85	V
		$I_F=5A$ $T_J=125$			0.75	V
		$I_F=10A$ $T_J=25$			0.95	V
		$I_F=10A$ $T_J=125$			0.85	V
Instantaneous Reverse Current	I_R	$V_R=100V$ $T_J=25$			10	uA
		V_{RPea4} 314 339.7404 $T_m(R)$ T_j 10.49580 741 T_f 77.02 343.98 358.700				

Note 1

/ Electrical Characteristic Curve



/ Package Dimensions



单位: mm

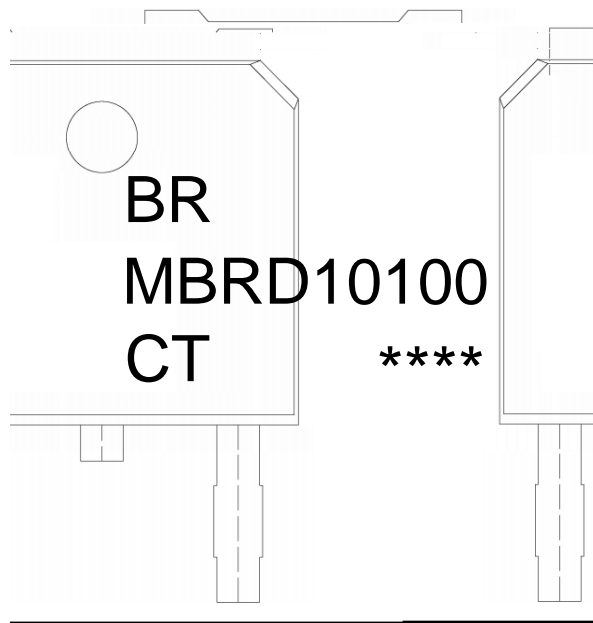
Dimensions		Millimeters		Dimensions		In Millimeters	
Min	Max	Min	Max	Min	Max	Min	Max
1	0.08	2	0.10	3	0.20	4	0.25
25	e1	2.24	2.34	5	B	0.95	7
60	2	4.13	4.72	6	5	0.70	8
0.95	10.35	h	0.45	0.55	9	10.35	10
0.00	0.15	0.55	0.75	11	0.15	12	0.15
0.00	0.10	6.75	6.75	13	0.60	14	0.60
0.00	0.10	DLT	5.10	5.50	KL	0.60	0.60

TO-252

MBRD10100CT

Rev.H Aug.-2025

/ Marking Instructions



BR

MBRD10100

CT:

Note:

BR: Company Code

MBRD10100 Product Type Code

CT: Internal Structure

****: Lot No. Code, code change with Lot No.

MBRD10100CT

Rev.H Aug.-2025