

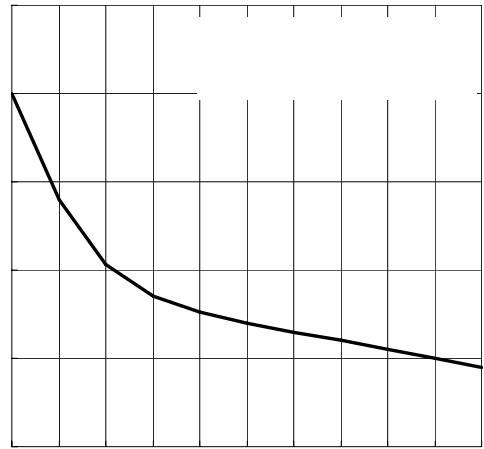


# LV10T150B

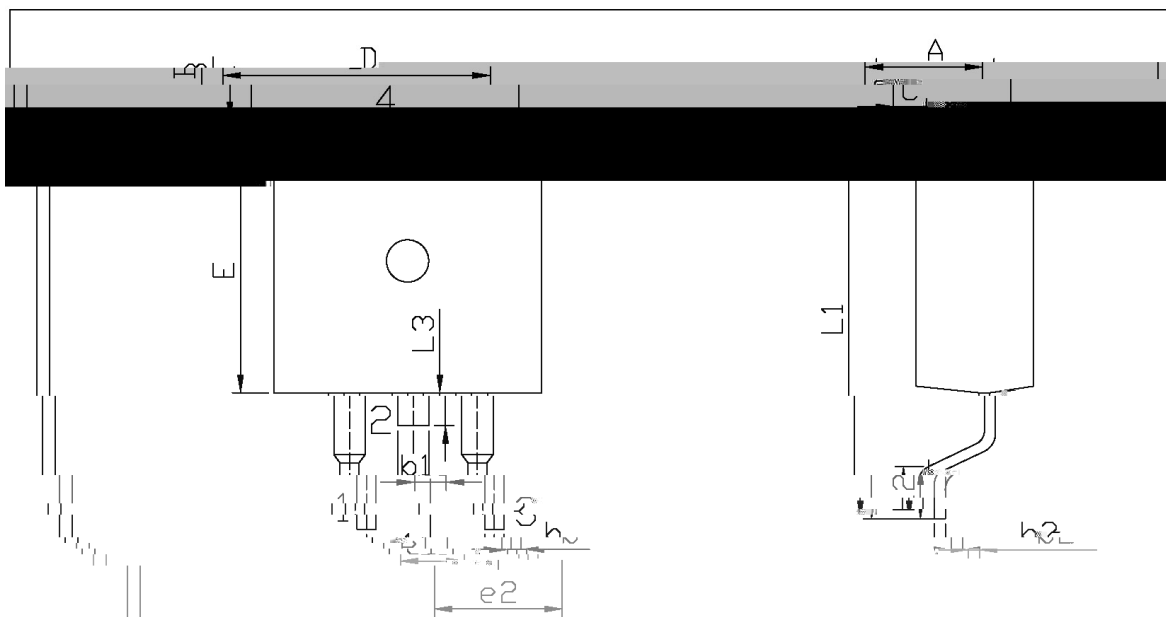
Rev.E May.-2016

Parameter	Symbol	Rating	Unit
Peak Repetitive Reverse Voltage Working Peak Reverse Voltage DC Blocking Voltage	$V_{RM}$ $V_{RSM}$ $V_{DC}$	150	V
RMS Reverse Voltage	$V_{RMS}$	105	V
Average forward rectified current	$I_{F(AV)}$	1×10	A
Non Repetitive Peak Surge Current	$I_{FSM}$	200	A
Thermal Resistance Junction to Case	$R_{Jc}$	2.8	/W
Junction and Storage Temperature Range	$T_j$ $T_{stg}$	-40 +150	

Parameter	Symbol	Test Conditions	Min	Typ	Max	Unit
Reverse Voltage	$V_{(BR)R}$	$I_R=1mA(T_a=25^\circ C)$	150			V
Forward Voltage	$V_F$	$I_F=2A(T_a=25^\circ C)$		0.58		V
		$I_F=10A(T_a=25^\circ C)$		0.81	0.85	V
		$I_F=2A(T_a=125^\circ C)$		0.47		V
		$I_F=10A(T_a=125^\circ C)$		0.69	75	V



**/ Package Dimensions**



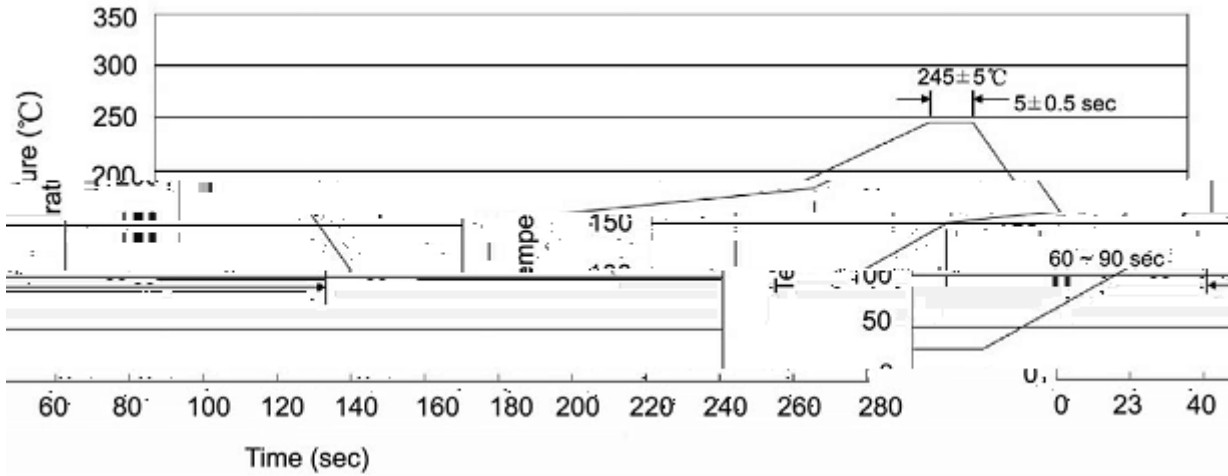
单位: mm

Dimensions in Millimeters

Max	Min	Max	Min
9.40	4.30	4.70	9.00
2.74	1.00	1.40	2.34



( ) /



Note:

- |   |        |     |            |        |   |
|---|--------|-----|------------|--------|---|
| 1 | 25     | 150 | 60         | 90sec; | 1.Preheating:25~150 , Time:60~90sec.      |
| 2 | 245..5 |     | 5..0.5sec; |        | 2.Peak Temp.:245..5 , Duration:5..0.5sec. |
| 3 |        | 2   | 10         | /sec.  | 3. Cooling Speed: 2~10 /sec.              |

**/ Resistance to Soldering Heat Test Conditions**

260..5                      10..1 sec.                      Temp.:260±5                      Time:10±1 sec

**/ Packaging SPEC.**

/ REEL

Package Type	Units					Dimension (unit mm <sup>3</sup> )		
	Units/Reel	Reels/Inner Box	Units/Inner Box	Inner Boxes/Outer Box	Units/Outer Box	Reel	Inner Box	Outer Box
TO-263	800	1	800	5	4,000	13 ×24	360×360×50	385×257×392

/ TUBE

Package Type	Units					Dimension (unit mm <sup>3</sup> )		
	Units/Tube	Tubes/Inner Box	Units/Inner Box	Inner Boxes/Outer Box	Units/Outer Box	Tube	Inner Box	Outer Box
TO-263	50	20	1,000	5	5,000	532×33×7.0	555×164×50	575×290×180

**/ Notices**