

/ Descriptions

TO-220 Voltage Regulator in a TO-220 Plastic Package.

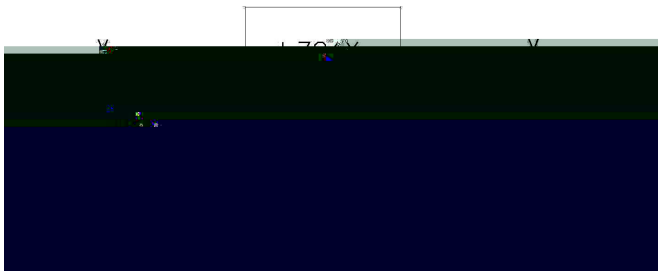
/ Features

1A,
3-Terminal regulators ,output current up to 1A, internal thermal overload protection and short-circuit limiting.

/ Applications

Voltage Regulator.

/ / Equivalent Circuit or Application Circuit



/ Pinning



1 2 3
PIN1 IN PIN 2 GND PIN 3 OUT

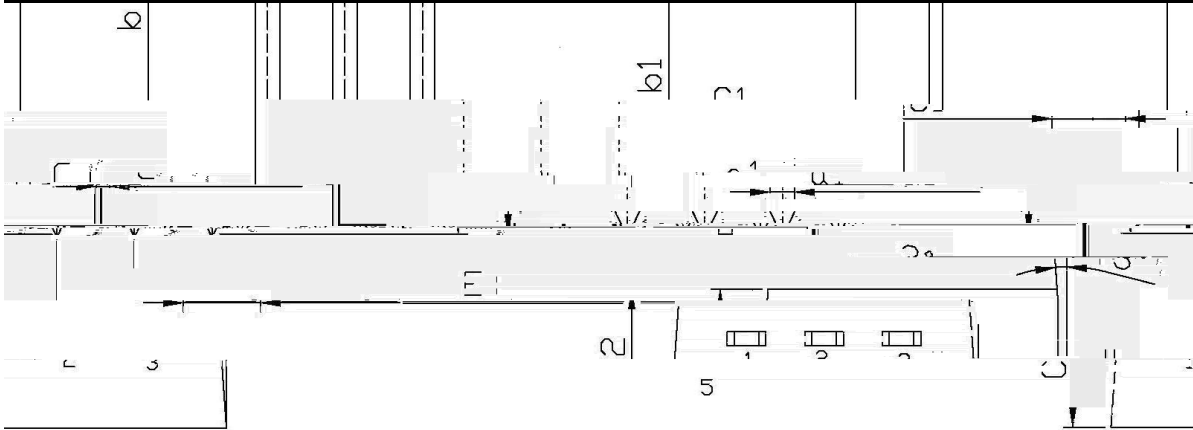
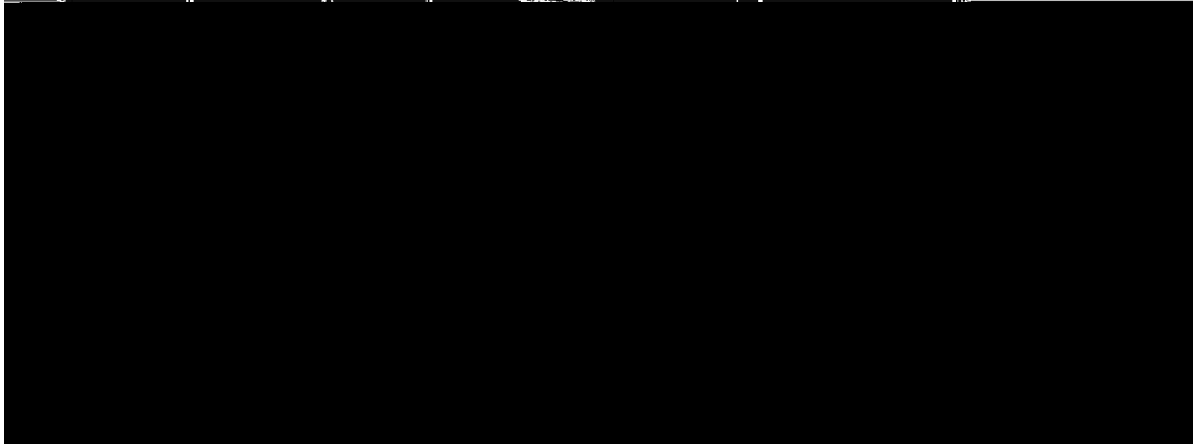
/ Marking

See Marking Instructions.

Parameter	Symbol	Rating	Unit
Input voltage	V_I	35	V
Operating Junction Temperature Range	T_{OPR}	0 125	
Storage temperature range	T_{stg}	-65 150	

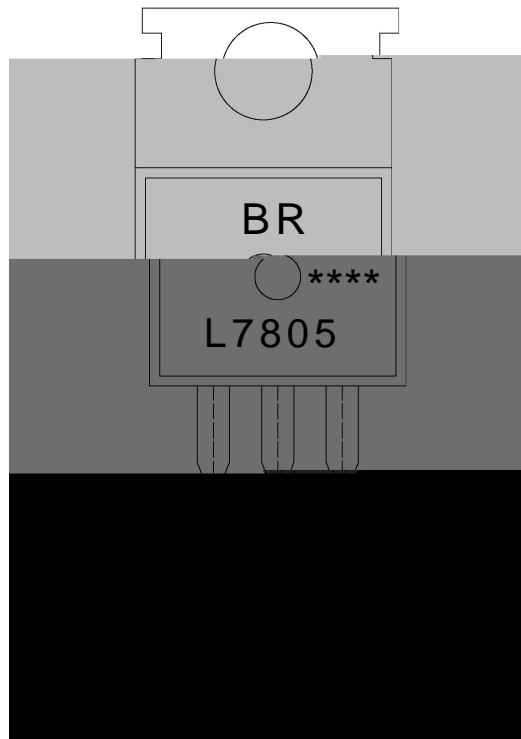
Parameter

/ Package Dimensions



Symbol	Dimensions in Millimeters		Symbol	Dimensions in Millimeters	
	Min	Max		Min	Max
Δ	9.8	10.2	ϕ	1.2	1.4
R	3.56	3.64	b	6.3	6.7
b	12.6	13.6	b1	9.6	10.6
b1	9.6	10.6	c	13.2	14.5
ϕ	1.2	1.4	5	17.4	18.34
	10.2	12.5		14.5	

/ Marking Instructions



BR

L7805

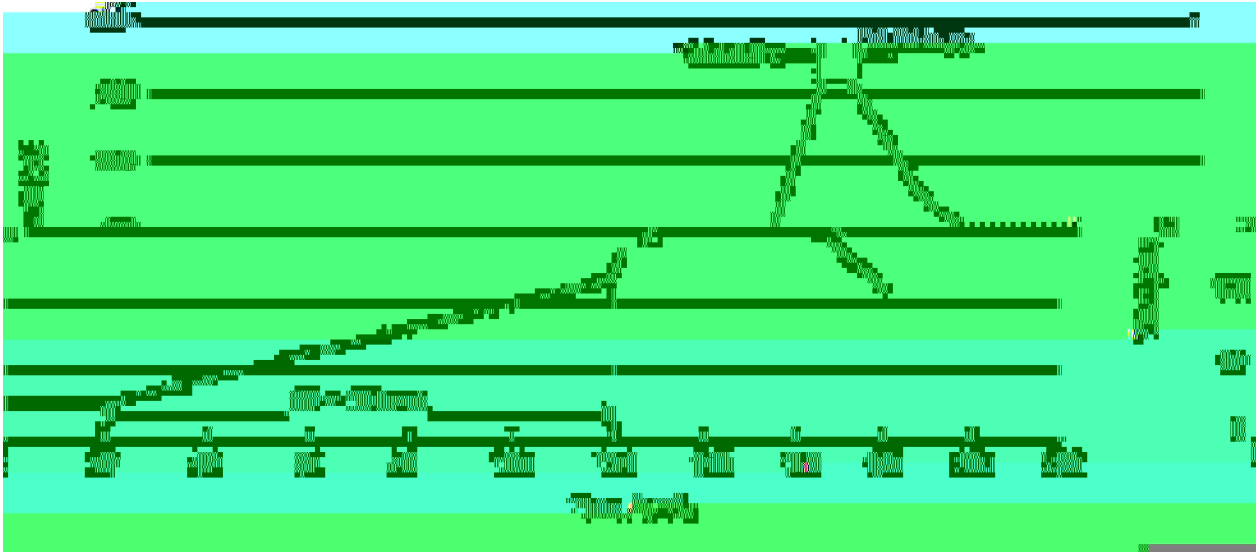
Note:

BR: Company Code.

L7805: Product Type.

****: Lot No. Code, code change with Lot No.

() / Temperature Profile for Dip Soldering(Pb-Free)



Note:

- | | | | | | |
|---|-----|-----|----|---------|---|
| 1 | 25 | 150 | 60 | 90sec; | 1.Preheating:25~150 , Time:60~90sec. |
| 2 | 255 | 5 | 5 | 0.5sec; | 2.Peak Temp.:255 5 , Duration:5 0.5sec. |
| 3 | | 2 | 10 | /sec. | 3. Cooling Speed: 2~10 /sec. |

/ Resistance to Soldering Heat Test Conditions

270 ±5 10 ±1 sec. Temp:270±5 Time:10±1 sec

/ Packaging SPEC.

/ BULK

Package Type	Units					Dimension (unit mm3)		
	Units/Bag /	Bags/Inner Box /	Units/Inner Box /	Inner Boxes/Outer Box /	Units/Outer Box /	Bag	Inner Box	Outer Box
TO-220/F	200	10	2,000	5	10,000	135×190	237×172×102	560×245×195

/ TUBE

Package Type	Units	Dimension (unit mm3)
Units/Tube /		