

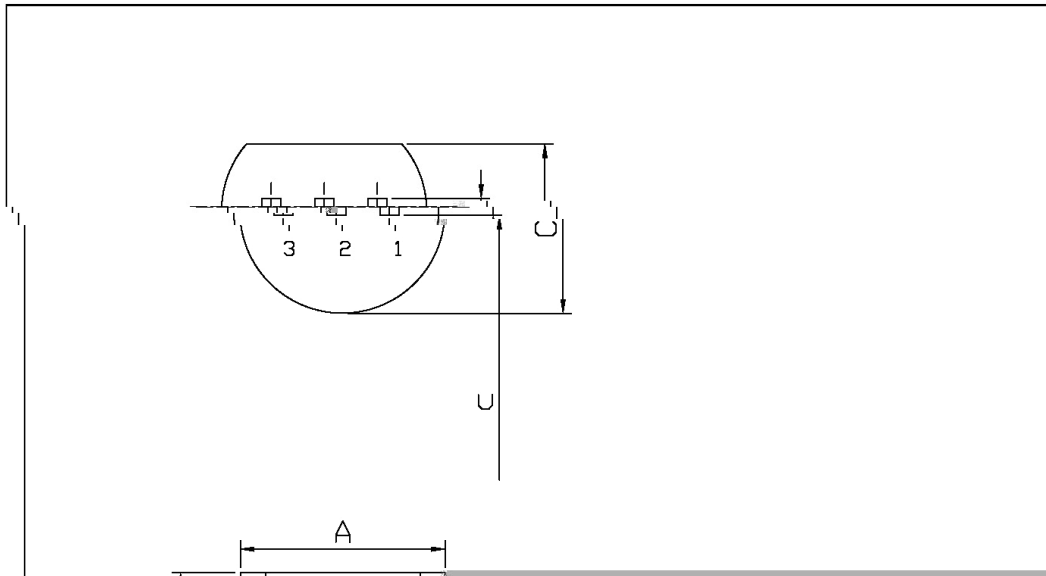
Parameter	Symbol	Rating	Unit
Collector to Base Voltage	V_{CBO}	-80	V
Collector to Emitter Voltage	V_{CEO}	-60	V
Emitter to Base Voltage	V_{EBO}	-8.0	V
Collector Current - Continuous	I_C	-700	mA
Collector Power Dissipation	P_C	1.0	W
Junction Temperature	T_j	150	
Storage Temperature Range	T_{stg}	-55 150	

Parameter	Symbol	Test Conditions	Min	Typ	Max	Unit
Collector to Base Breakdown Voltage	V_{CBO}	$I_C = -100\mu A$ $I_E = 0$	-80			V
Collector to Emitter Breakdown Voltage	V_{CEO}	$I_C = -10mA$ $I_B = 0$	-60			V
Emitter to Base Breakdown Voltage	V_{EBO}	$I_E = -100\mu A$ $I_C = 0$	-8.0			V
Collector Cut-Off Current	I_{CBO}	$V_{CB} = -60V$ $I_E = 0$			-0.1	μA (at $T_j = 25^\circ C$)

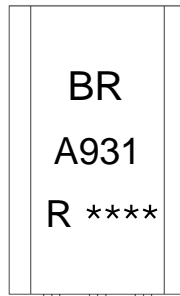


TO-92LM

Unit: mm



Symbol	Dimensions In Millimeters	
	Min	Max
A	1.47	5.1
B	1.27	1.27
C	1.27	1.27
D	1.27	1.27
E	1.27	1.27
F	1.27	1.27
G	1.27	1.27
H	1.27	1.27
I	1.27	1.27
J	1.27	1.27
K	1.27	1.27
L	1.27	1.27
M	1.27	1.27
N	1.27	1.27
O	1.27	1.27
P	1.27	1.27
Q	1.27	1.27
R	1.27	1.27
S	1.27	1.27
T	1.27	1.27
U	1.27	1.27
V	1.27	1.27
W	1.27	1.27
X	1.27	1.27
Y	1.27	1.27
Z	1.27	1.27



BR:

A931

R: h_{FE}

Note:

BR: Company Code.

A931: Product Type.

R: h_{FE} Classifications Symbol

****: Lot No. Code,code change with Lot No.

