

5 é / Descriptions

9 5 : .> // x J´ 6 4 6 f â´ož Silicon PNP Digital transistor in a SOT-323 Plastic Package.

¤ª / Features

Ä x ž á Š k • ž è — ‹ k x 5 « ^ y ò - v i k —) i D } ož

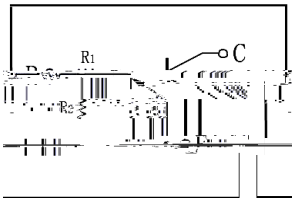
With built-in bias resistors, simplify circuit design, reduce a quantity of parts and manufacturing process, HF Product.

Đ ÷ / Applications

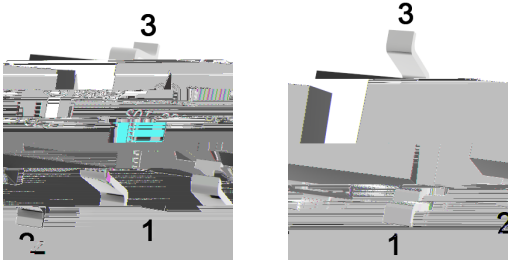
9 • ¼ o • F , è o • µ è Y C Ü è ož

Switching, inverter circuit, interface circuit and driver circuit applications.

Ã W ] Ô • / Equivalent Circuit



• Ű - æ / Pinning



PIN 1 y Base

PIN 2 y Emitter

PIN 3 y Collector

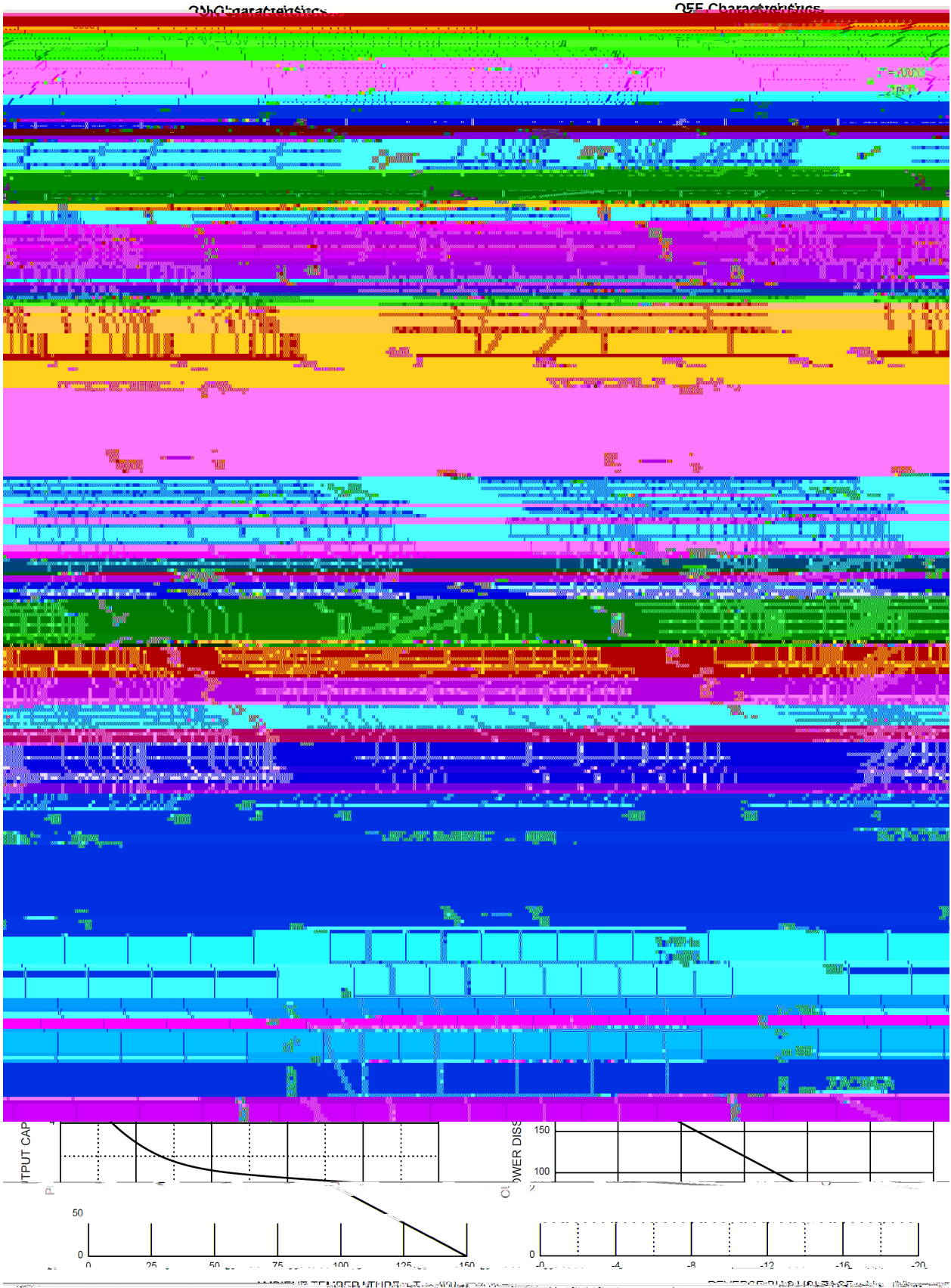
Z Ü B , M V / hFE Classifications & Marking

Marking	HE11
---------	------

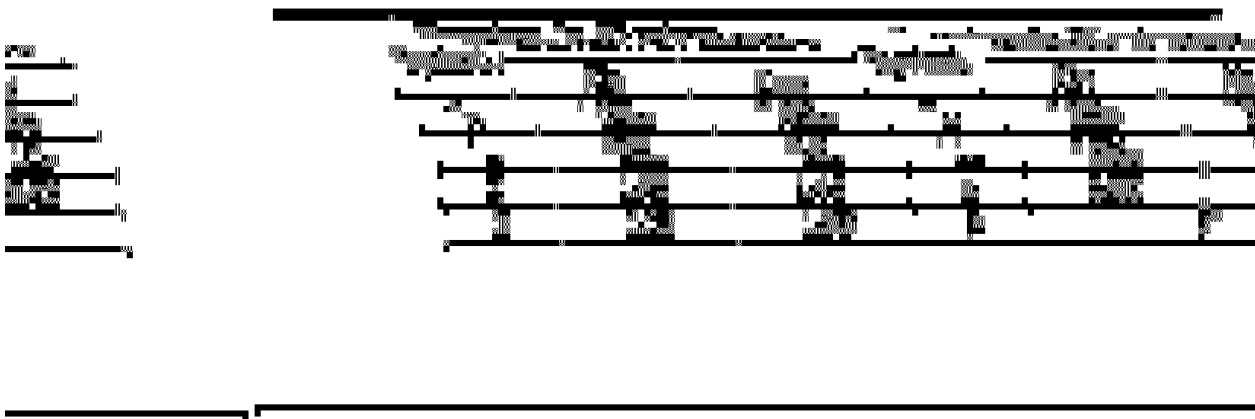
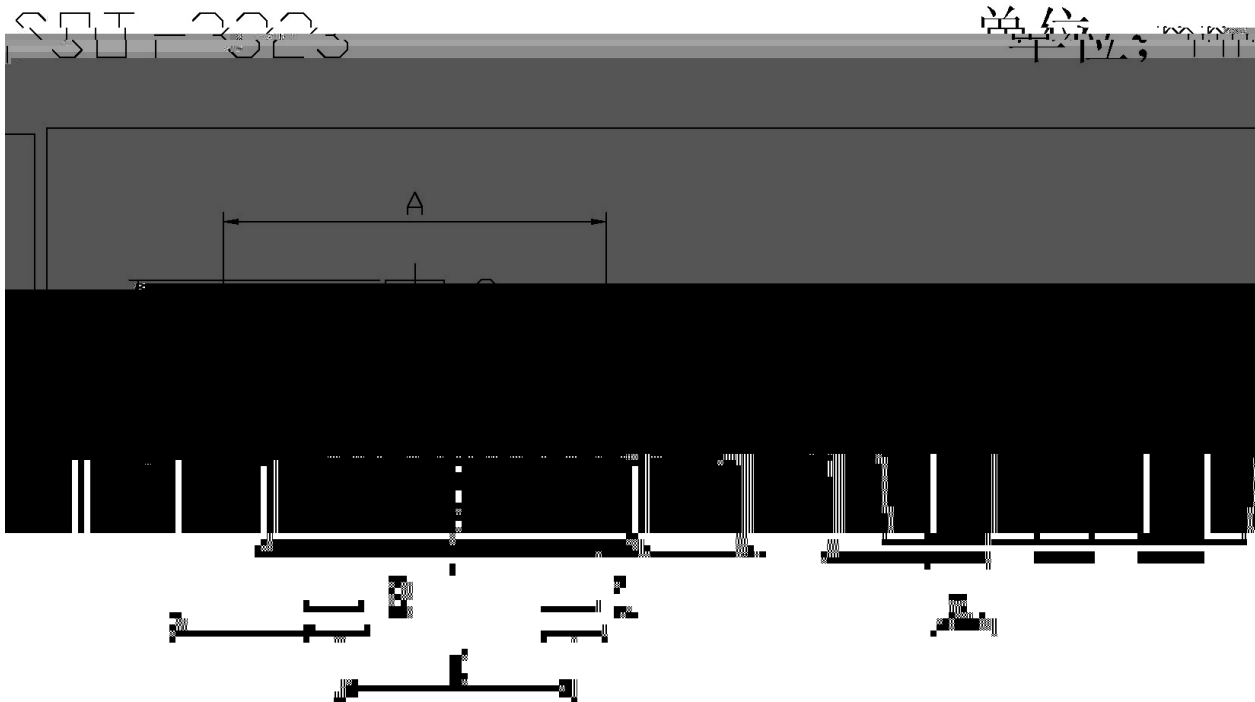
@ f Parameter	... Z Symbol	f › Rating	% y Unit
Supply Voltage	V <sub>CC</sub>	-50	V
Input Voltage	V <sub>IN</sub>	-10	V
		5	V
Output Current	I <sub>O</sub>	-100	mA
Power Dissipation	P <sub>D</sub>	200	mW
Operation Junction and Storage Temperature Range	T <sub>J</sub> , T <sub>stg</sub>	-55 150	

@ f Parameter	... Z Symbol	y i Ú ^ Test Conditions	Â 4 › Min	Á ° › Typ	Â Ý › Max	% y Unit
Input Voltage	V <sub>I(off)</sub>	V <sub>CC</sub> =-5.0V I				

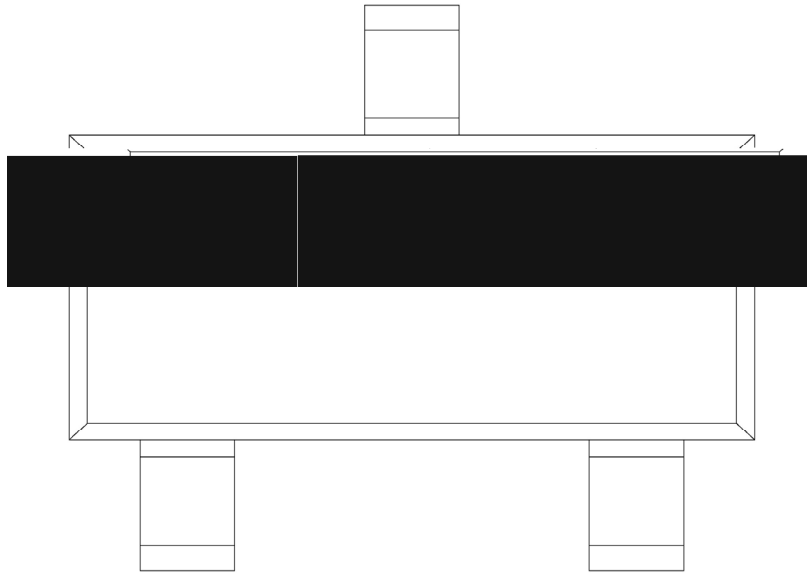
Electrical Characteristic Curve



Ø □ = ) ϕ / Package Dimensions



, M y f / Marking Instructions



<sup>a</sup>  $\phi$  y

. y      , [ W A

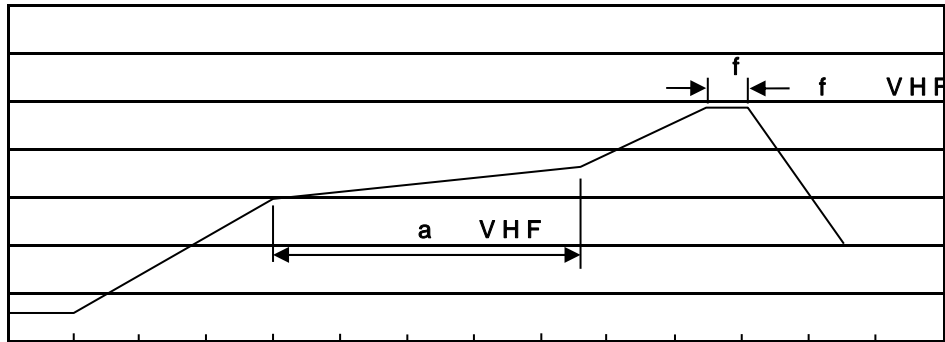
E11 y      ° Z W A

Note:

. y

šWD t... • Žč (x/ ) / :KSVKXGZ[XK 6XULORK LUX /8 8KLRU] 9URJKXOTM 6

7HP SHUDW XUH



**7LPH VHF**

<sup>a</sup> č y

- 1o• Ä ½ “ † 150 ½180 - k ž • 60 ½90sec;
- 2o• Q › “ † 245 r5 - k ž • 4 Ö 5 r0.5sec;
- 3o•D N ò i Ò 0 , † 2 ½10 - /sec.

Note:

- 1.Preheating:150~180 - , Time:60~90sec.
- 2.Peak Temp.:245 r5 - , Duration:5 r0.5sec.
- 3. Cooling Speed: 2~10 - /sec.

**ÂD /Cã p ~ » ] / Resistance to Soldering Heat Test Conditions**

“ † y 260 r5 - ž • y 10 r1 sec. Temp:260±5 Time:10±1 sec

**G P á / Packaging SPEC.**

2 & x / REEL

Package Type 7>û ~ E	Units ;>û !H					Dimension ;>û p . (unit Åmm³)		
	Units/Reel / --	Reels/Inner Box -- /-	Units/Inner Box /-	Inner Boxes/Outer Box - /1ç	Units/Outer Box /1ç	Reel	Inner Box	Outer Boxç
SOT-323	3,000	10	30,000	6	180,000	s x8	180x120x180	390x385x205

**„ ð y f / Notices**