

5 é / Descriptions

9 5 : .> // x 6 4 6 !- } â o

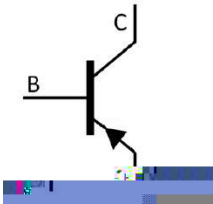
α a / Features

Öy 9 z k v Ýk ' ' +) 7 ö Öä U · · } L k) í D } o

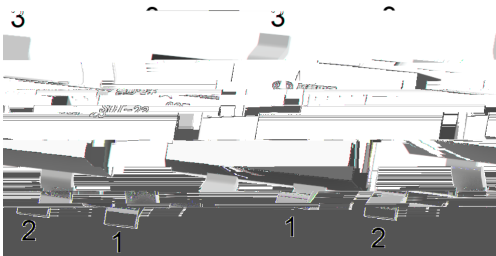
Đ ÷ / Applications

9%† " † " ... k@à † " P °` ϕ k ¿ ~ ... k Æ V æ } Lo

Ã W] Ô · / Equivalent Circuit



• Ô - æ / Pinning



y

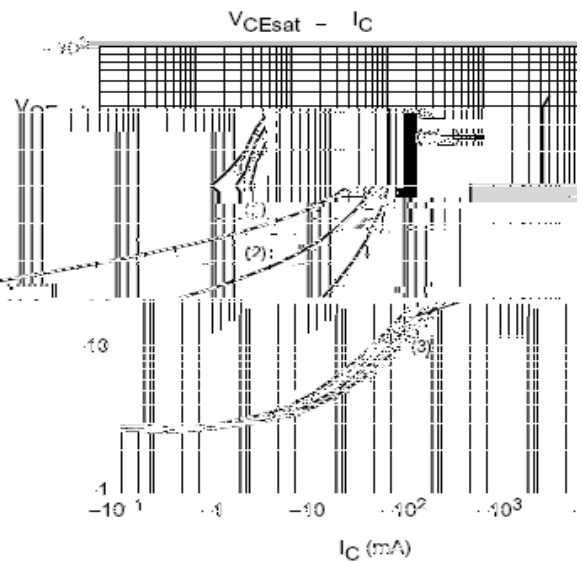
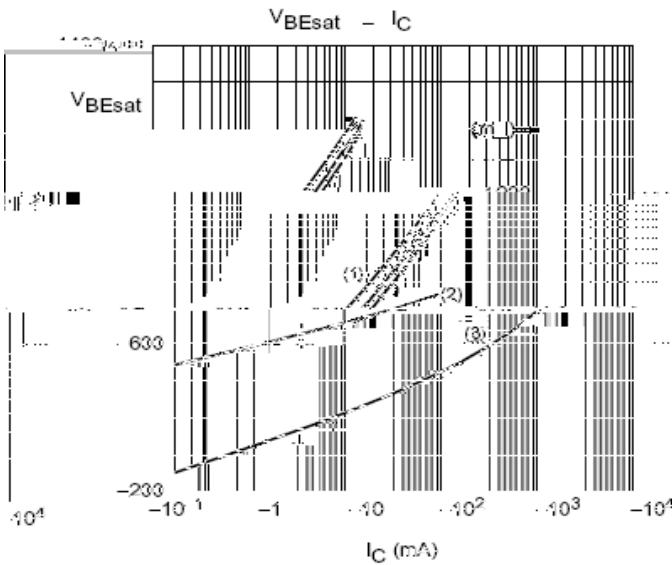
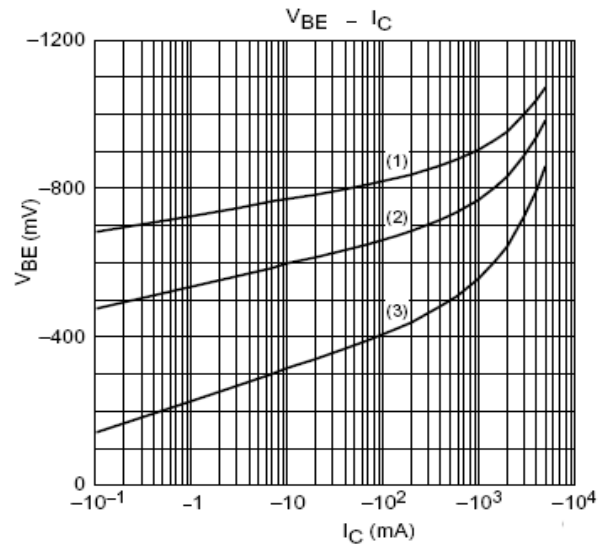
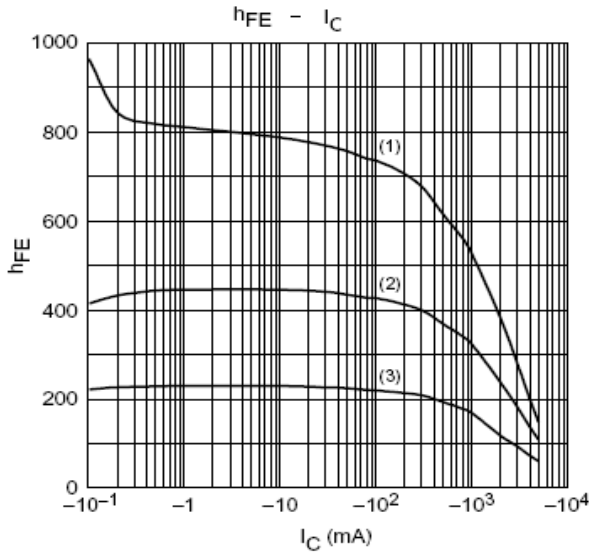
y

y

Z Ü B , M V / hFE Classifications & Marking

@	Z		% y
	#		
	# Ā		

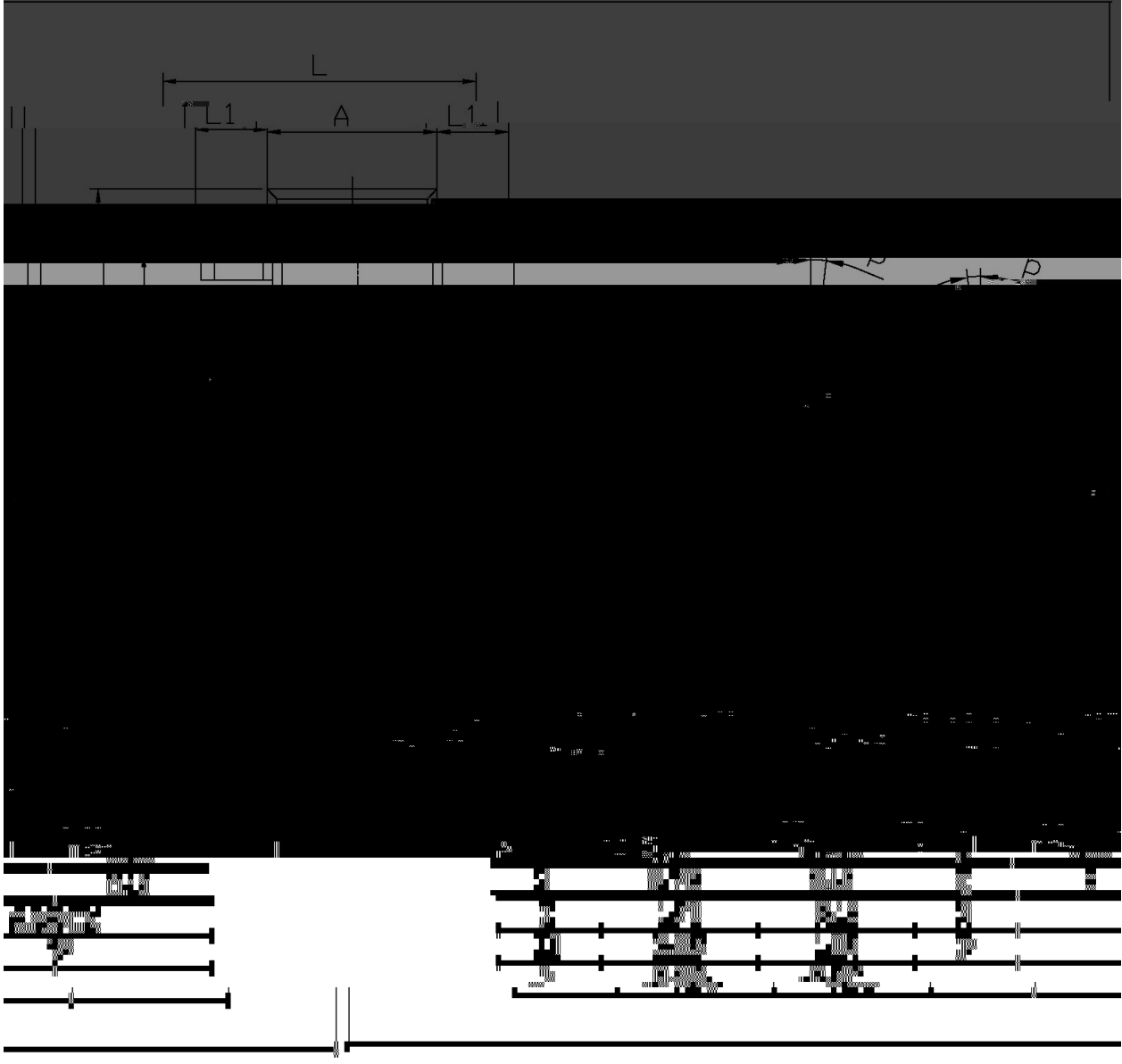
Electrical Characteristic Curve



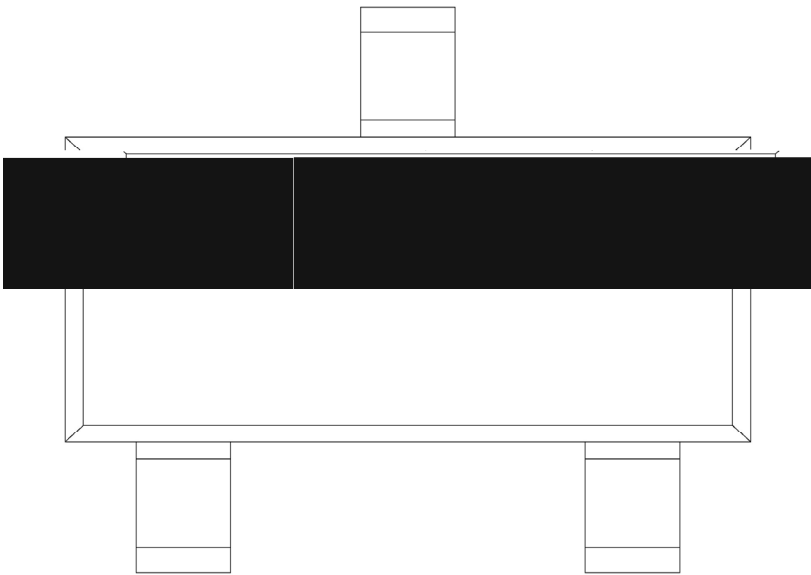
Ø □ =) φ / Package Dimensions

SOT-23

单位: mm



, My f / Marking Instructions



" ¢ y
7 y V æ)í D } ö
@ . y " Z W A

y

šWD t...•Žç (x/) / :KSVKXGZ[XK 6XULORK LUX /8 8KLRU] 9URJKXOTM 6

"ç y

o ~ %

%

- k

%

-

o Q

r - k

4 Ò

r

r -

r

o D N ò i Ò ,

% -

-

ÂD /Cã p ~ »] / Resistance to Soldering Heat Test Conditions

y

r -

y

r

GP á / Packaging SPEC.

2 & x