

**/ Descriptions**

SOP-8 Dual Operational Amplifiers in a SOP-8 Plastic Package.

**/ Features**

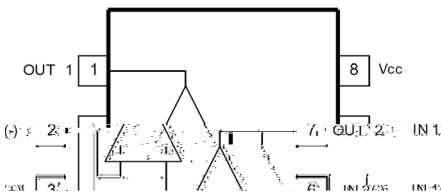
$\pm 4 \sim \pm 18V$

Large common mode and differential voltage range, Gain and phase match between amplifiers, Internally frequency compensated, Low noise input transistors, Operating supply voltage range:  $\pm 4$  to  $\pm 18V$ .

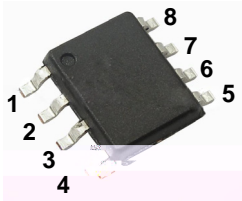
**/ Applications**

Application areas include transducer amplifier, DC gain blocks and all the conventional OP amp circuits.

**/ Equivalent Circuit**



**/ Pinning**



PIN / PIN See Equivalent Circuit.

**/ Marking**

/ See Marking Instructions

# BROP4558SC

Rev.E Oct.-2018

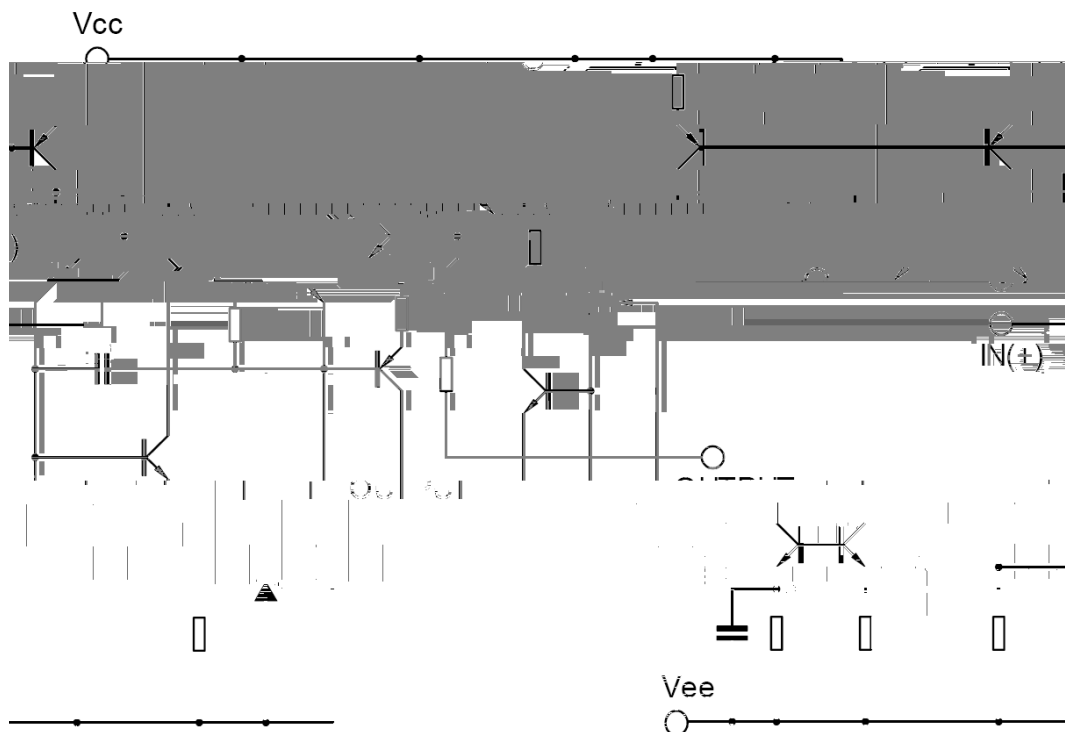


DATA SHEET

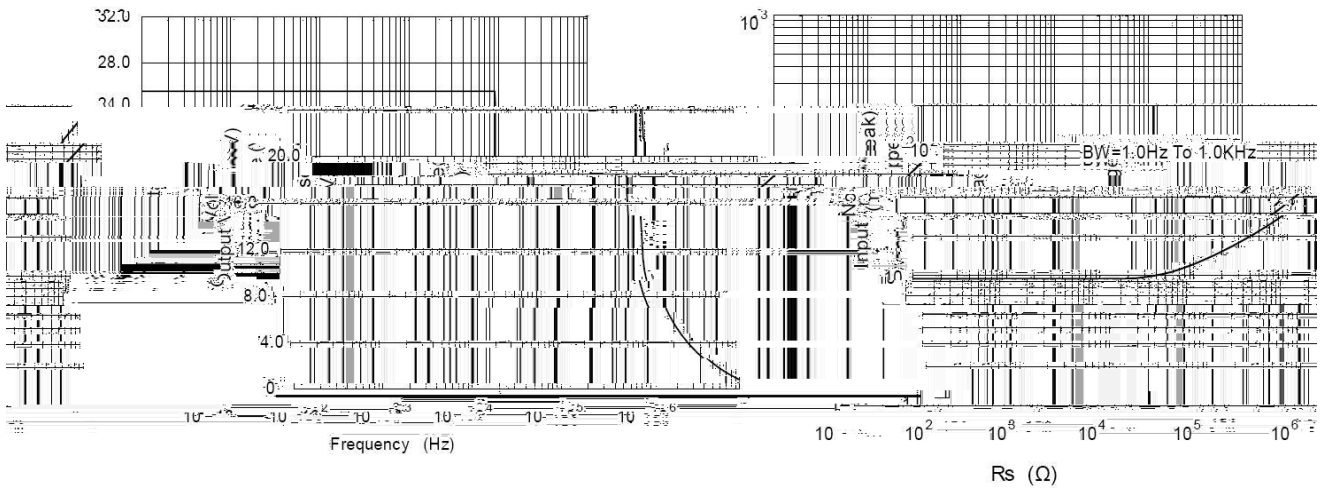
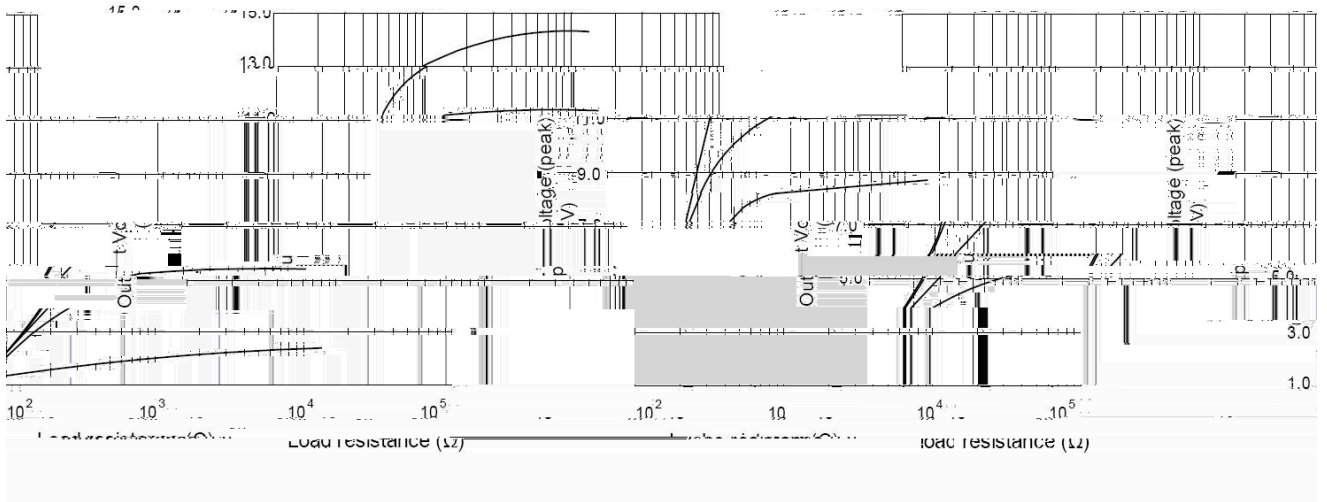
Parameter	Symbol	Rating	Unit
Supply Voltage	$V_{CC}$	$\pm 22$	V
Differential input voltage	$V_{I(DIFF)}$	$\pm 18$	V
Input Voltage	$V_I$	$\pm 15$	V
Power Dissipation	$P_D$	300	mW
Operating Temperature	$T_{opr}$	-40 ~ 85	
Storage Temperature	$T_{stg}$	-40 ~ 125	

Parameter	Symbol	Test Conditions	Min	Typ	Max	Unit
Input offset voltage	$V_{IO}$	$V_{CC}=15V$ $V_{EE}=-15V$				

/ Functional Block Diagram



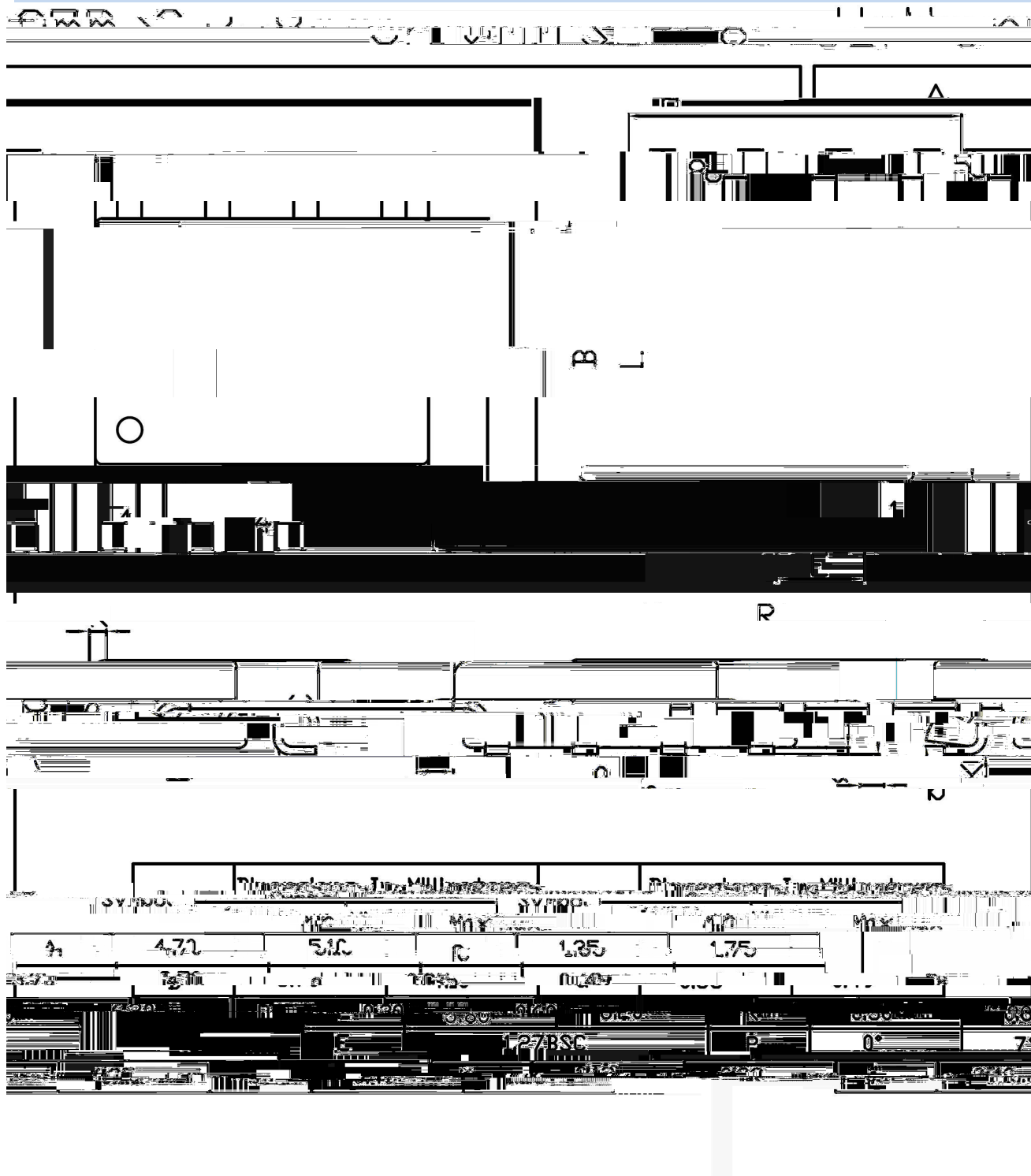
**/ Electrical Characteristic Curve**



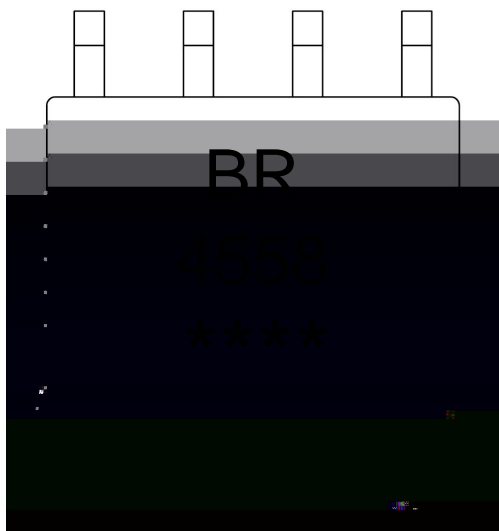
**BROP4558SC**

Rev.E Oct.-2018

/ Package Dimensions



**/ Marking Instructions**



BR

4558

\*\*\*\*

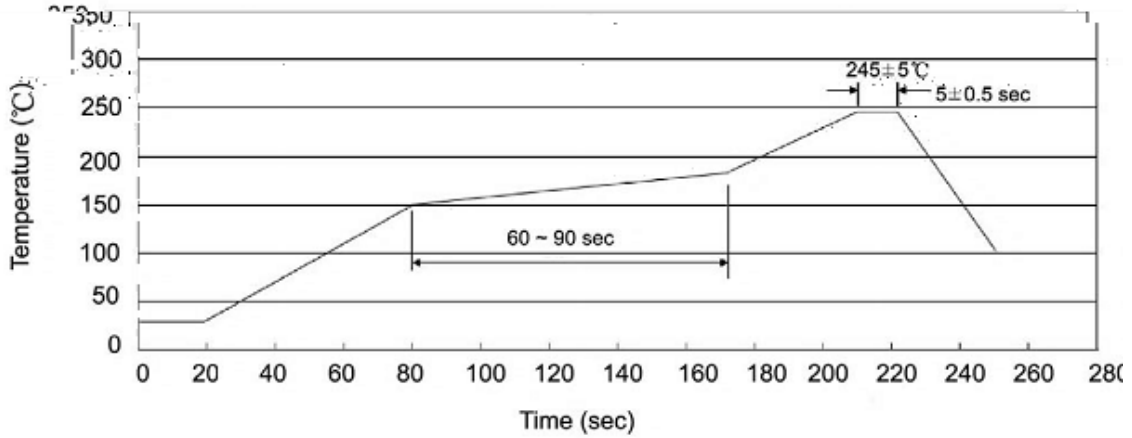
Note:

BR: Company Code.

4558: Product Type.

\*\*\*\*: Lot No. Code, code change with Lot No.

( ) / Temperature Profile for IR Reflow Soldering(Pb-Free)



Note:

- |   |       |     |    |           |   |
|---|-------|-----|----|-----------|---|
| 1 | 150   | 180 | 60 | 90sec;    | 1.Preheating:150~180 , Time:60~90sec.   |
| 2 | 245±5 |     |    | 5±0.5sec; | 2.Peak Temp.:245±5 , Duration:5±0.5sec. |
| 3 |       |     | 2  | 10 /sec.  | 3. Cooling Speed: 2~10 /sec.            |

/ Resistance to Soldering Heat Test Conditions

260±5                      10±1 sec.                      Temp.:260±5                      Time:10±1 sec

/ Packaging SPEC.

/ REEL

Package Type 封装形式	Units/Reel 只/卷盘	Reels/Inner Box 卷盘/盒	Units 包装数量	Dimension 包装尺寸 (unit: mm <sup>3</sup> )
----------------------	--------------------	-------------------------	------------	---