

**BRCS5N10MCQ**

# BRC5N10MCQ

Rev.A Jan.-2025

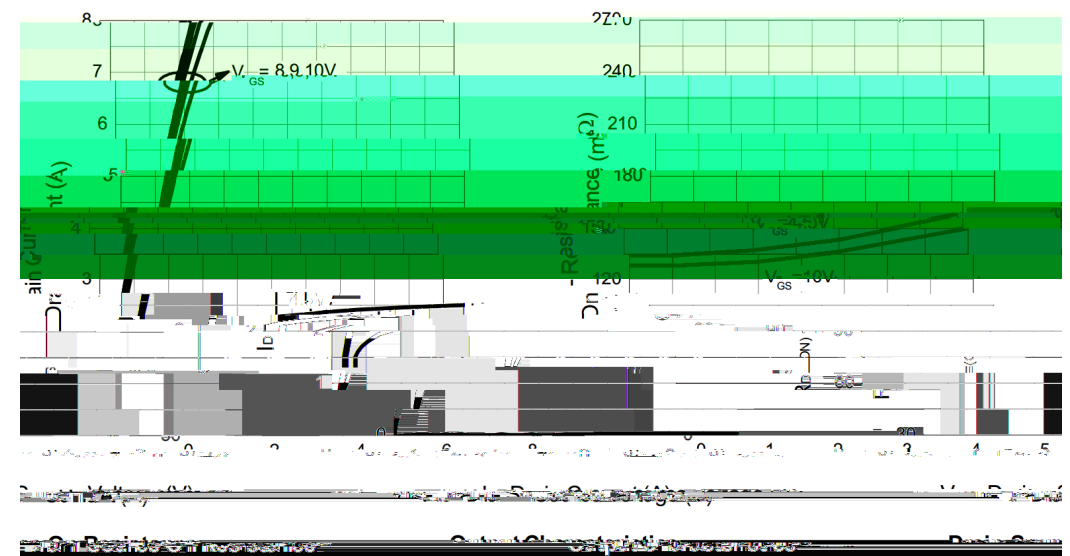
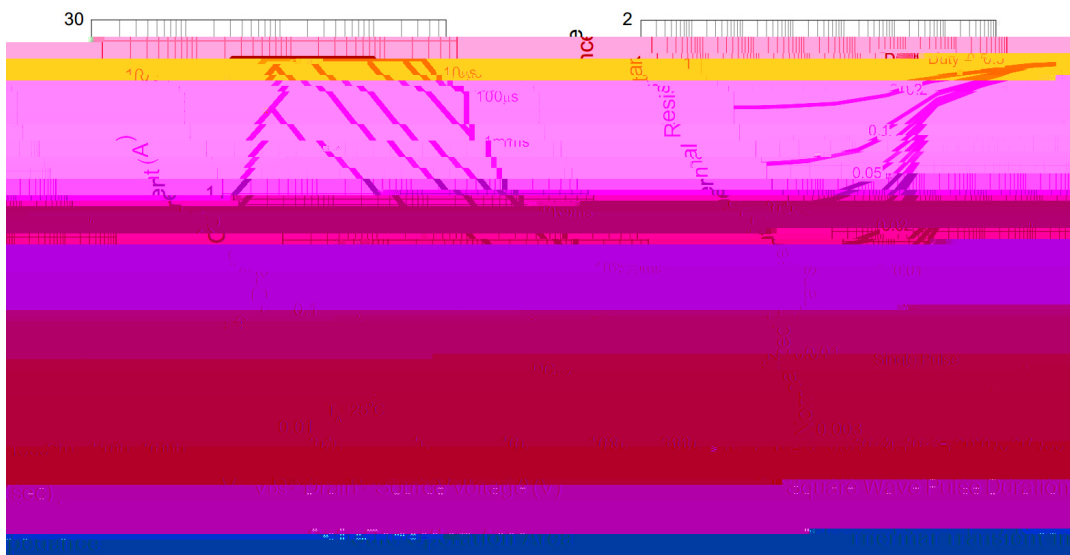
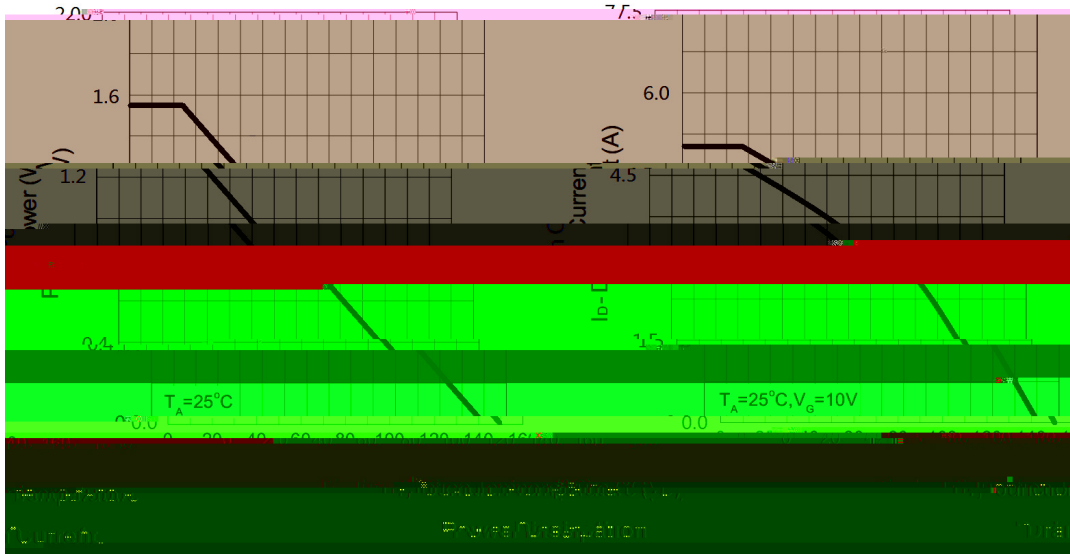


DATA SHEET

Parameter	Symbol	Rating	Unit
Drain-Source Voltage	$V_{DSS}$	100	V
Gate-Source Voltage	$V_{GSS}$	$\pm 20$	V
Maximum Drain Current - Continuous	$I_D$	5.0	A
Drain Current- Pulsed	$I_{DM}$	15	A
Power Dissipation	$P_D$	1.55	W
Maximum Junction Temperature	$T_J$	150	
Storage Temperature Range	$T_{STG}$	-55 to 150	
Maximum Resistance –Junction to Ambient	$R_{JA}$	80.7	/W

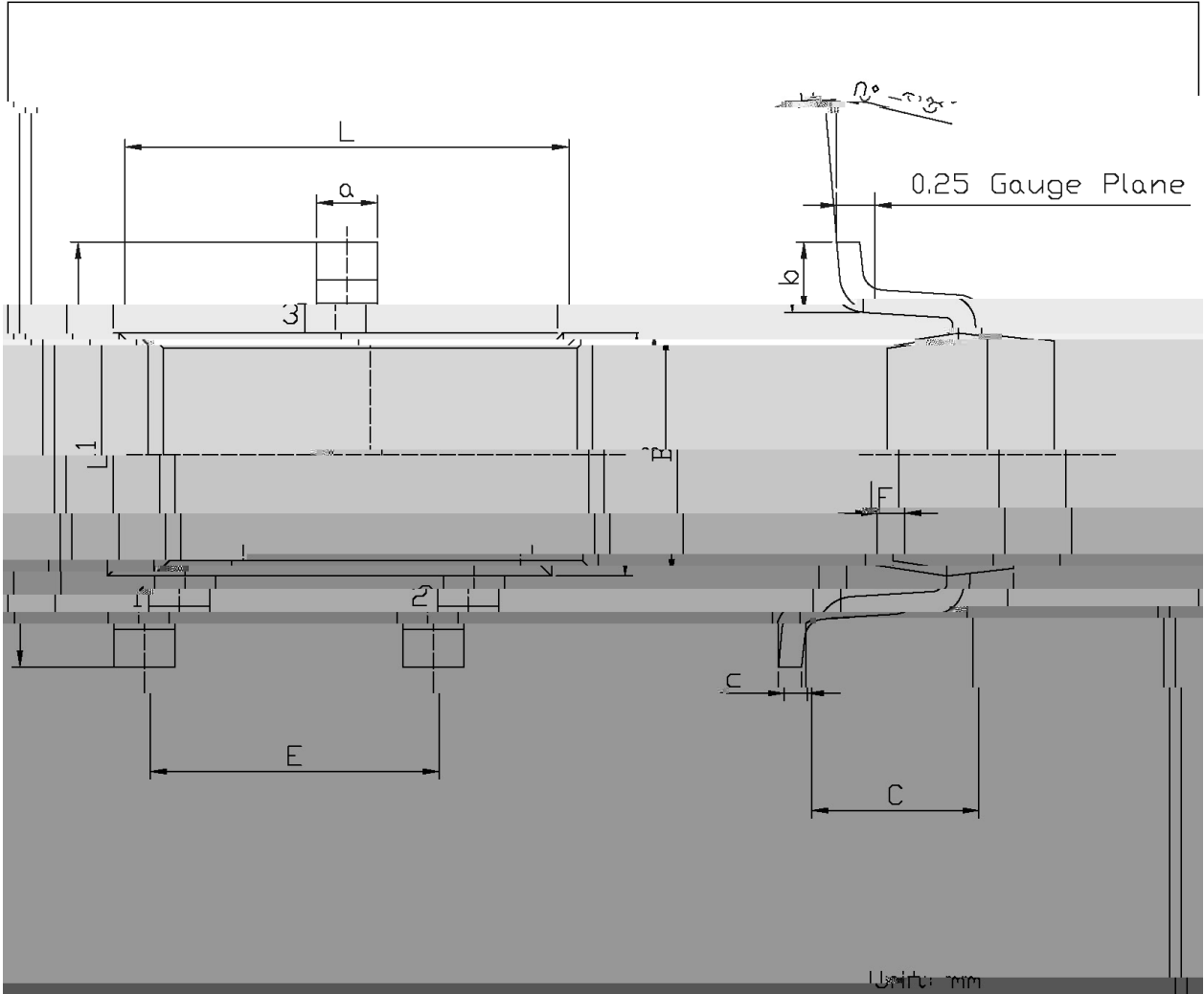
Parameter	Symbol	Test Conditions	Min	Typ	Max	Unit
Drain–Source Breakdown Voltage	$BV_{DSS}$	$V_{GS}=0V$ $I_{DS}=250$ A	100			V
Zero Gate Voltage Drain Current	$I_{DSS}$	$V_{DS}=100V$ $V_{GS}=0V$			1	A

**/ Electrical Characteristic Curve**



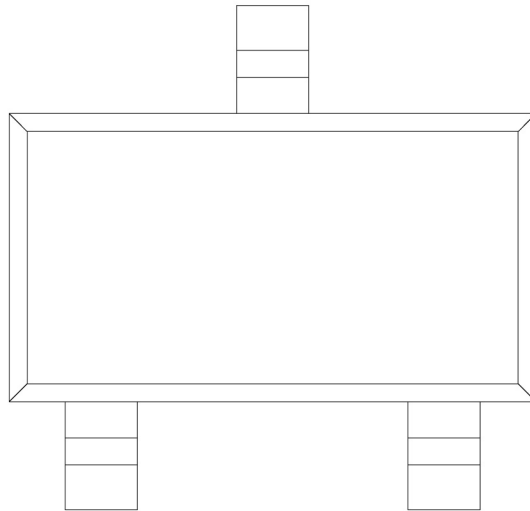


**/ Package Dimensions**

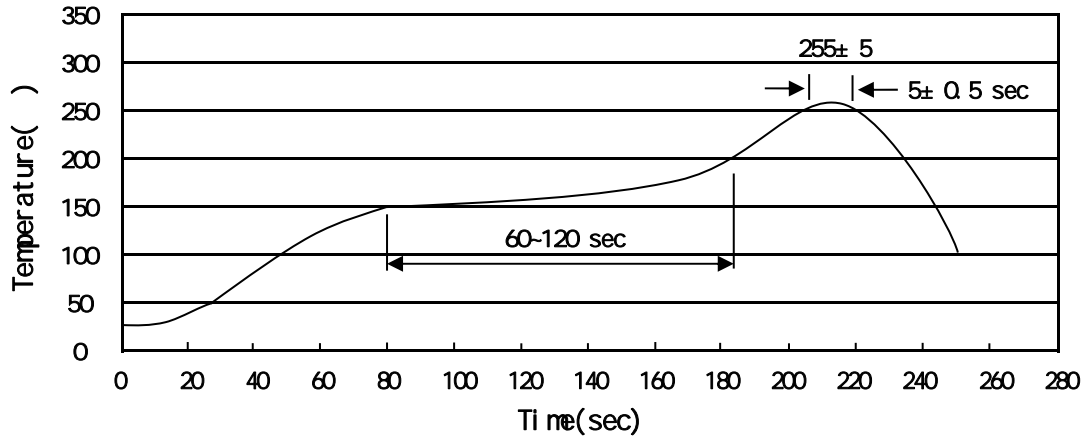


Unit: mm

Dimension	Value	Value	Value	Value	Value
L	2.92	2.02	a	0.25	0.50
3	1.50	1.15	C	0.10	0.20
1					
2					
E					
C					
F					



( ) / Temperature Profile for IR Reflow Soldering(Pb-Free)



Note:

- 1            150   200            60   120sec;    1.Preheating:150~200 , Time:60~120sec.
- 2            255   5                    5   0.5sec;    2.Peak Temp.:255   5 , Duration:5   0.5sec.
- 3                            2   10   /sec.            3.Cooling Speed: 2~10   /sec.

/ Resistance to Soldering Heat Test Conditions

260   5                    10   1 sec.                    Temp.:260±5                    Time:10±1 sec

/ Packaging SPEC.

/ REEL

Package Type	Units					Dimension (unit mm <sup>3</sup> )		
	Units/Reel	Reels/Inner Box	Units/Inner Box	Inner Boxes/Outer Box	Units/Outer Box	Reel	Inner Box	Outer Box
SOT23-3	3,000	10	30,000	4	120,000	7 ×8	210×205×205	445×435×230

/ Notices