

Rev.A Sep.-2022

N TO-263

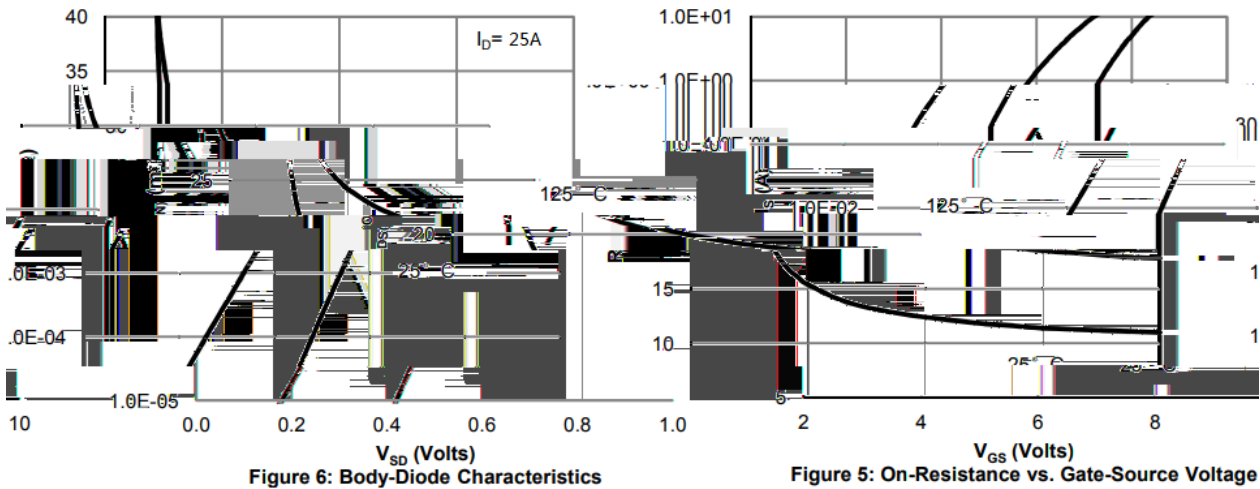
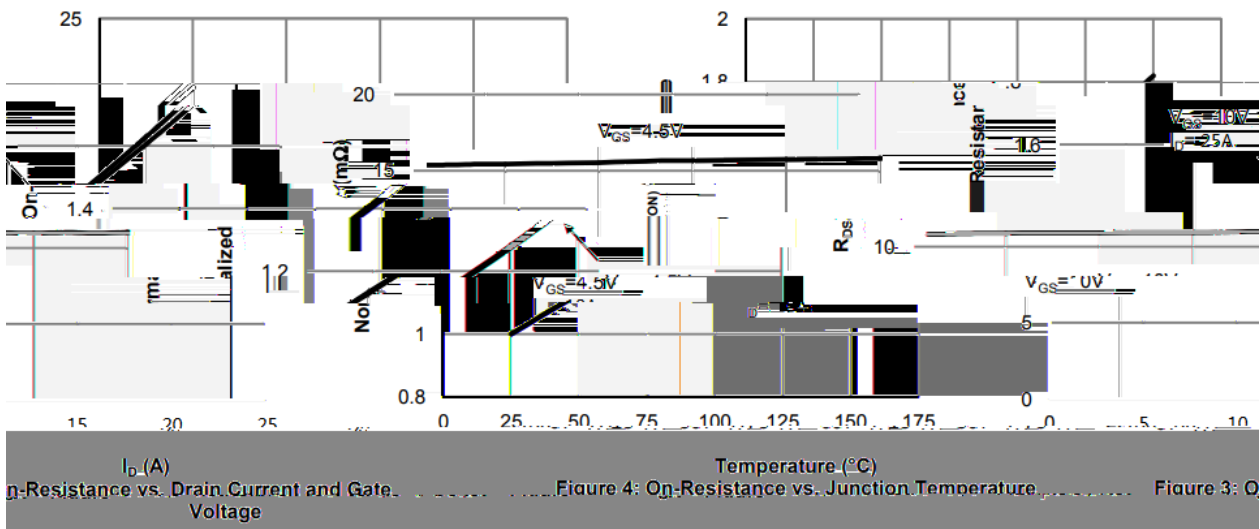
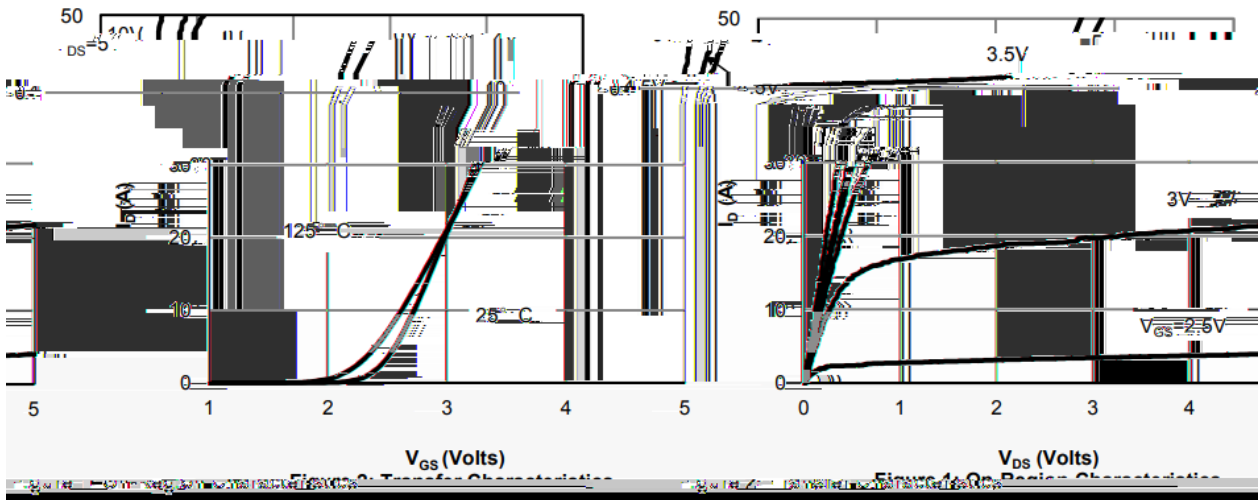
N-CHANNEL MOSFET in a TO-263 Plastic Package.

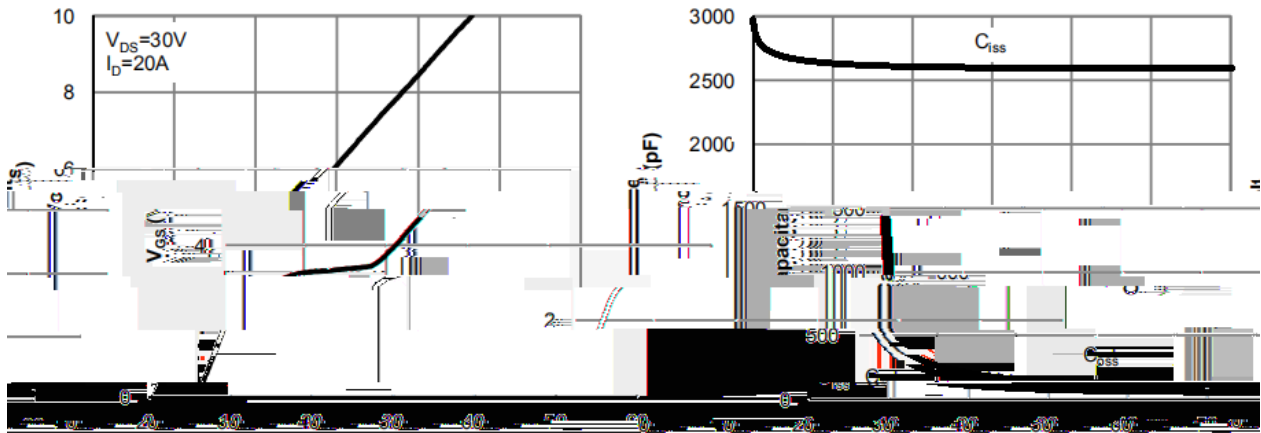
$R_{DS(on)}$

C_{rss}

Parameter	Symbol	Rating	Unit
Drain-Source Voltage	V_{DSS}	60	V
Drain Current	$I_D(T_c=25^\circ C)$	50	A
Drain Current - Pulsed	I_{DM}	200	A
Gate-Source Voltage	V_{GS}	± 20	V
Avalanche Current	I_{AS}	20	A
Single Pulsed Avalanche Energy	E_{AS}	170	mJ
Power Dissipation	$P_D(T_c=25^\circ C)$	75	W
Storage Temperature Range	T_{stg}	-55 150	

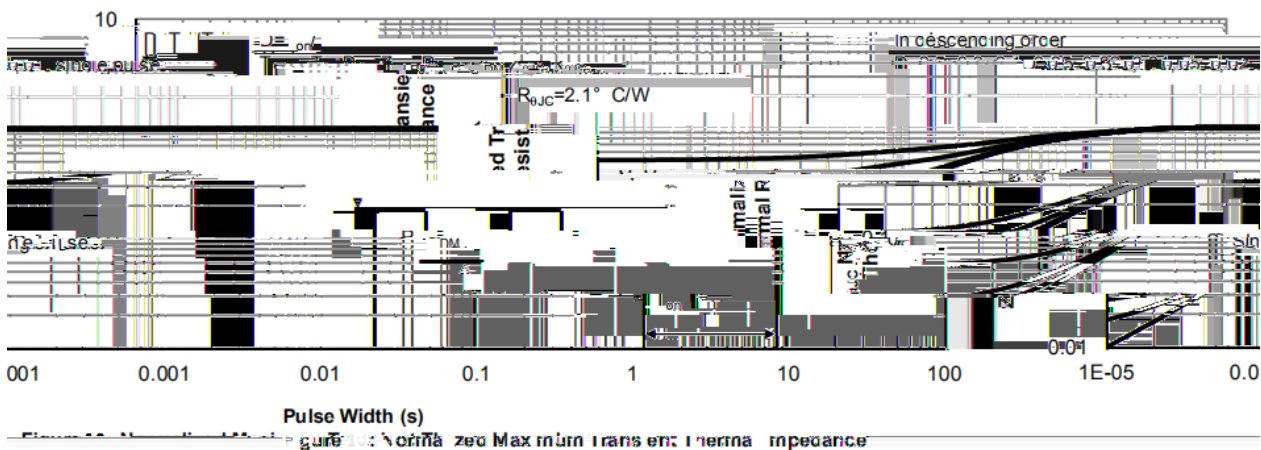
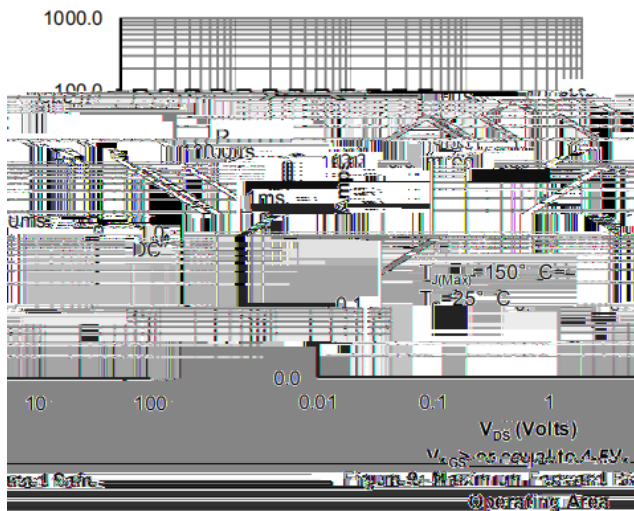
Parameter	Symbol	Test Conditions	Min	Typ	Max	Unit
Turn-On Delay Time	$t_{d(on)}$	$V_{GS}=10V$ $V_{DS}=30V$ $R_L=1.5$ $R_{GEN}=3$		8		ns
Turn-On Rise Time	t_r			5		
Turn-Off Delay Time	$t_{d(off)}$			30		
Turn-Off Fall Time	t_f			5.5		

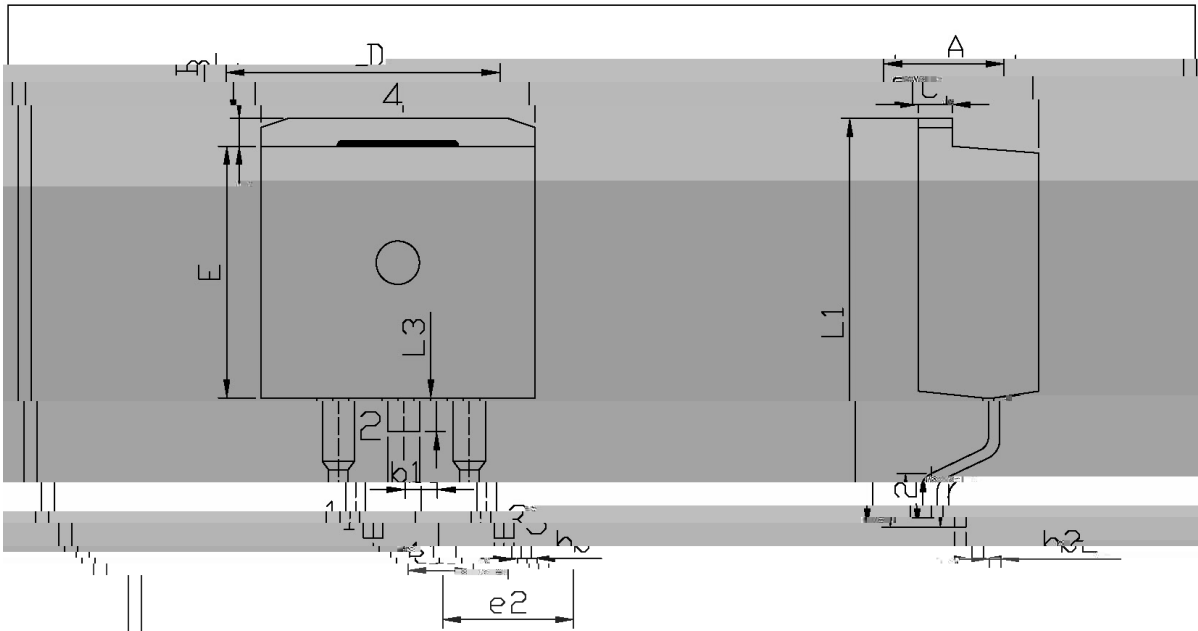




Q_g (nC)
Figure 7: Gate-Charge Characteristics

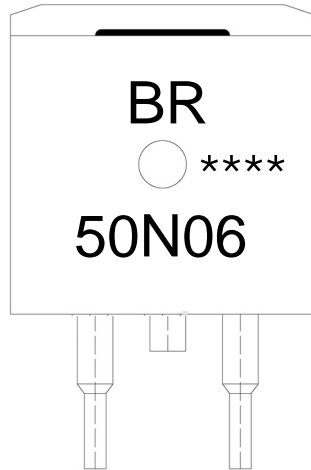
V_{DS} (Volts)
Figure 8: Capacitance Characteristics





单位: mm

Dimensions In. Millimeters		Dimensions In. Millimeters		Dimensions In. Millimeters	
Max	Min	Max	Min	Max	Min
a_1		A	4.30	E	9.00
		B	1.00	L	
				L ₁	
				L ₂	
				L ₃	
				L ₄	
				L ₅	
				L ₆	
				L ₇	
				L ₈	
				L ₉	
				L ₁₀	
				L ₁₁	
				L ₁₂	
				L ₁₃	
				L ₁₄	
				L ₁₅	
				L ₁₆	
				L ₁₇	
				L ₁₈	
				L ₁₉	
				L ₂₀	
				L ₂₁	
				L ₂₂	
				L ₂₃	
				L ₂₄	
				L ₂₅	
				L ₂₆	
				L ₂₇	
				L ₂₈	
				L ₂₉	
				L ₃₀	
				L ₃₁	
				L ₃₂	
				L ₃₃	
				L ₃₄	
				L ₃₅	
				L ₃₆	
				L ₃₇	
				L ₃₈	
				L ₃₉	
				L ₄₀	
				L ₄₁	
				L ₄₂	
				L ₄₃	
				L ₄₄	
				L ₄₅	
				L ₄₆	
				L ₄₇	
				L ₄₈	
				L ₄₉	
				L ₅₀	
				L ₅₁	
				L ₅₂	
				L ₅₃	
				L ₅₄	
				L ₅₅	
				L ₅₆	
				L ₅₇	
				L ₅₈	
				L ₅₉	
				L ₆₀	
				L ₆₁	
				L ₆₂	
				L ₆₃	
				L ₆₄	
				L ₆₅	
				L ₆₆	
				L ₆₇	
				L ₆₈	
				L ₆₉	
				L ₇₀	
				L ₇₁	
				L ₇₂	
				L ₇₃	
				L ₇₄	
				L ₇₅	
				L ₇₆	
				L ₇₇	
				L ₇₈	
				L ₇₉	
				L ₈₀	
				L ₈₁	
				L ₈₂	
				L ₈₃	
				L ₈₄	
				L ₈₅	
				L ₈₆	
				L ₈₇	
				L ₈₈	
				L ₈₉	
				L ₉₀	
				L ₉₁	
				L ₉₂	
				L ₉₃	
				L ₉₄	
				L ₉₅	
				L ₉₆	
				L ₉₇	
				L ₉₈	
				L ₉₉	
				L ₁₀₀	



BR

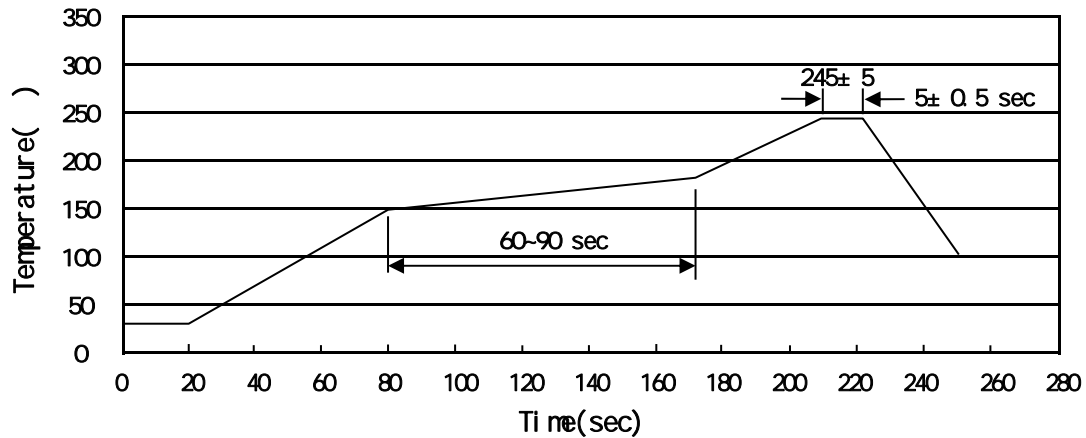
50N06

Note:

BR: Company Code

50N06: Product Type

****: Lot No. Code, code change with Lot No



Note:

- | | | | | | |
|---|-------|-----|----|-----------|---|
| 1 | 150 | 180 | 60 | 90sec; | 1.Preheating:150~180 , Time:60~90sec. |
| 2 | 245±5 | | | 5±0.5sec; | 2.Peak Temp.:245±5 , Duration:5±0.5sec. |
| 3 | | | 2 | 10 /sec. | 3. Cooling Speed: 2~10 /sec. |

260±5

10±1 sec.

Temp.:260±5

Time:10±1 sec

/ REEL

Package Type	Units					Dimension (unit mm ³)		
	Units/Reel	Reels/Inner Box	Units/Inner Box	Inner Boxes/Outer Box	Units/Outer Box	Reel	Inner Box	Outer Box
TO-263	800	1	800	6	4,800	13 ×24	360×360×50	380×335×366

/ TUBE

Package Type	Units					Dimension (unit mm ³)		
	Units/Tube	Tubes/Inner Box	Units/Inner Box	Inner Boxes/Outer Box	Units/Outer Box	Tube	Inner Box	Outer Box
TO-263	50	20	1,000	5	5,000	532×33×7.0	555×164×50	575×290×180