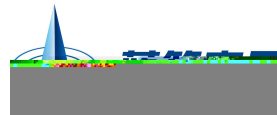


**BRCS20N06IP**

Rev.A Jan.-2020



**DATA SHEET**

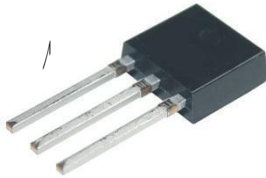
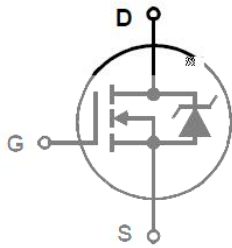
# 新版片版

TO-251      N      MOS      N-CHANNEL MOSFET in a TO-251 astic Package.

Low gate charge, low crss, fast switching.

# 版期版

Suited for low voltage applications such as automotive,DC/DC Converters,and high efficiency switching for power management in protable and battery operated products.



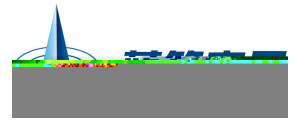
PIN1 G

Parameter

Parameter	Symbol
-----------	--------

# BRCS20N06IP

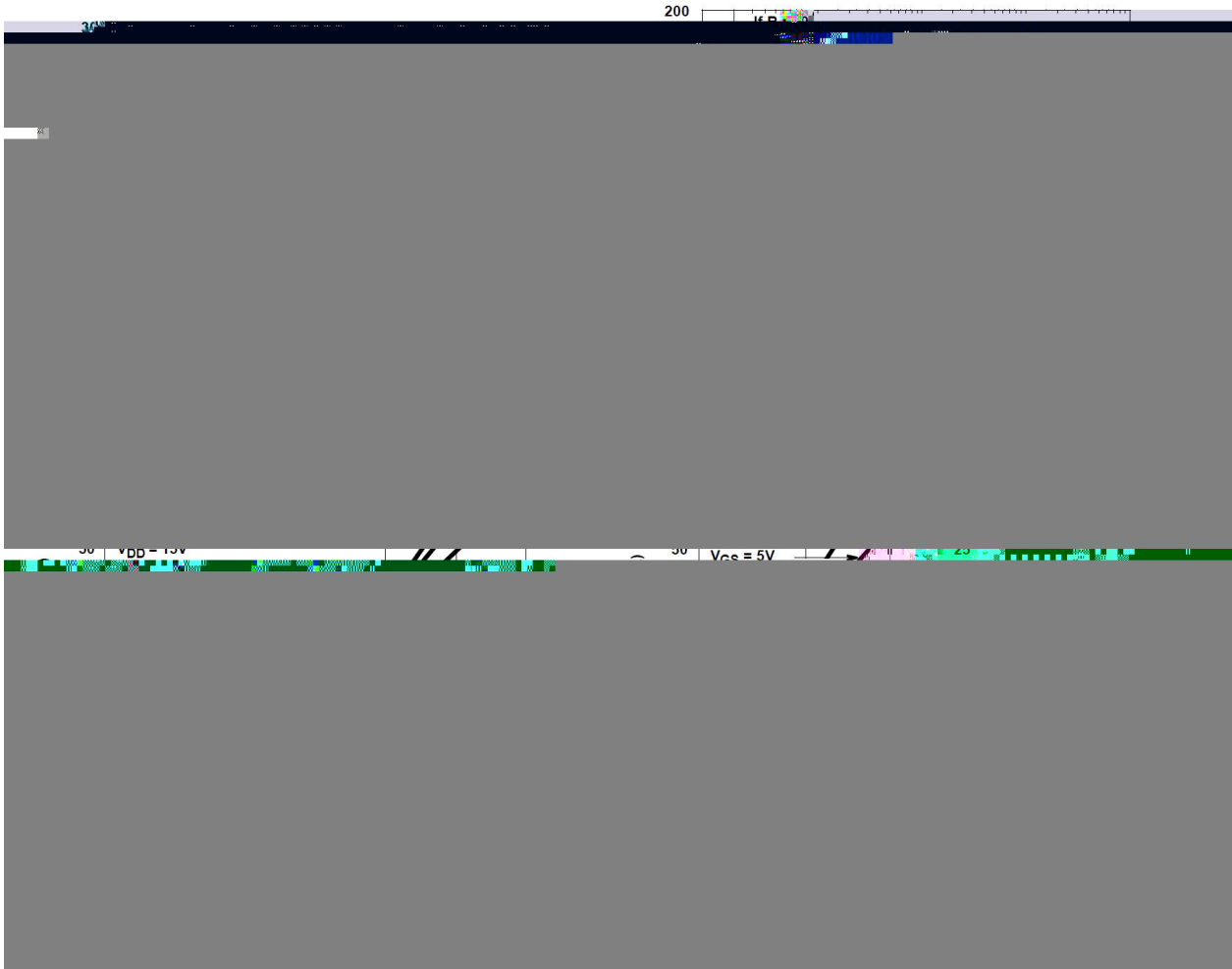
Rev.A Jan.-2020



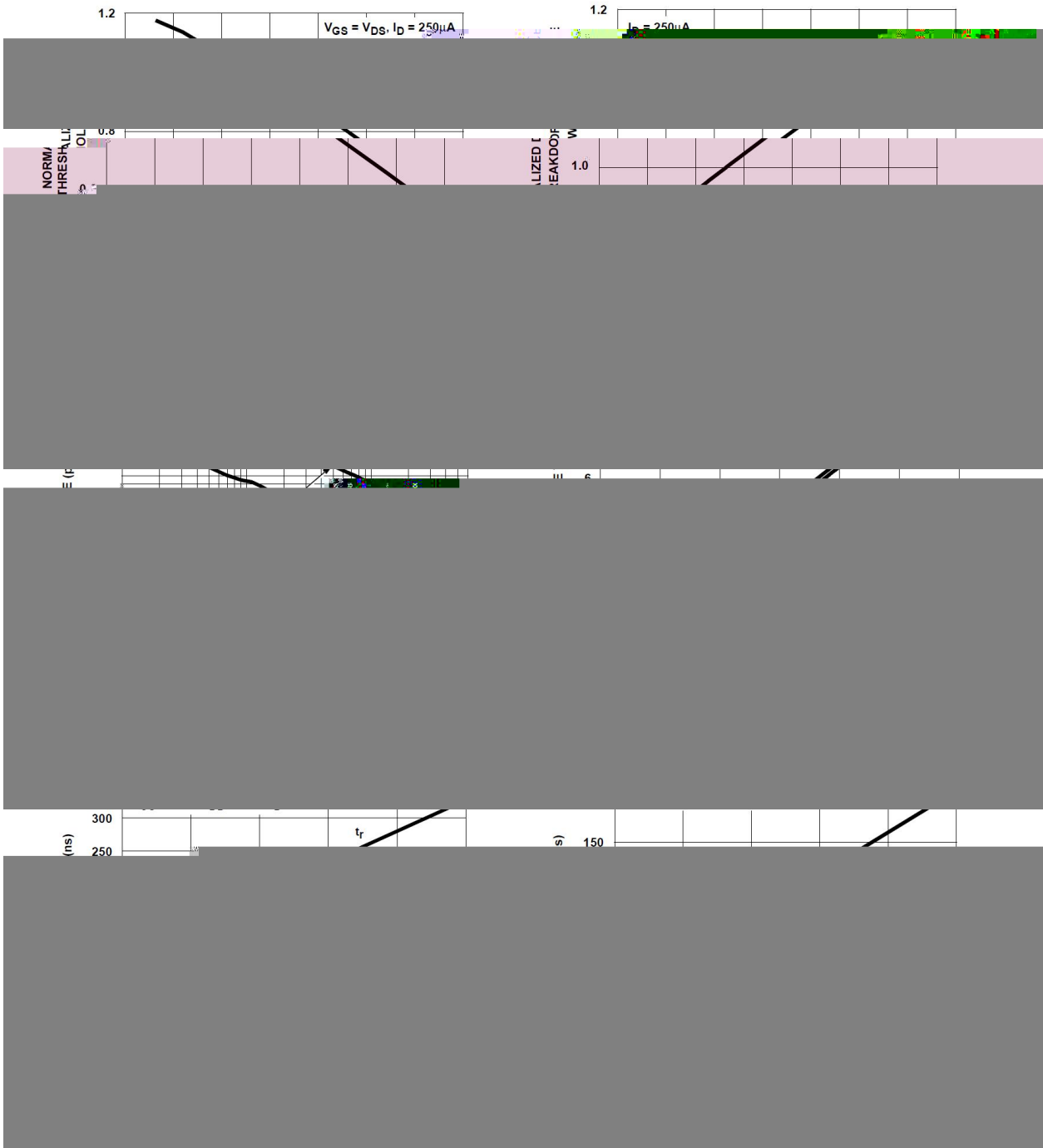
DATA SHEET



**/ Electrical Characteristic Curve**



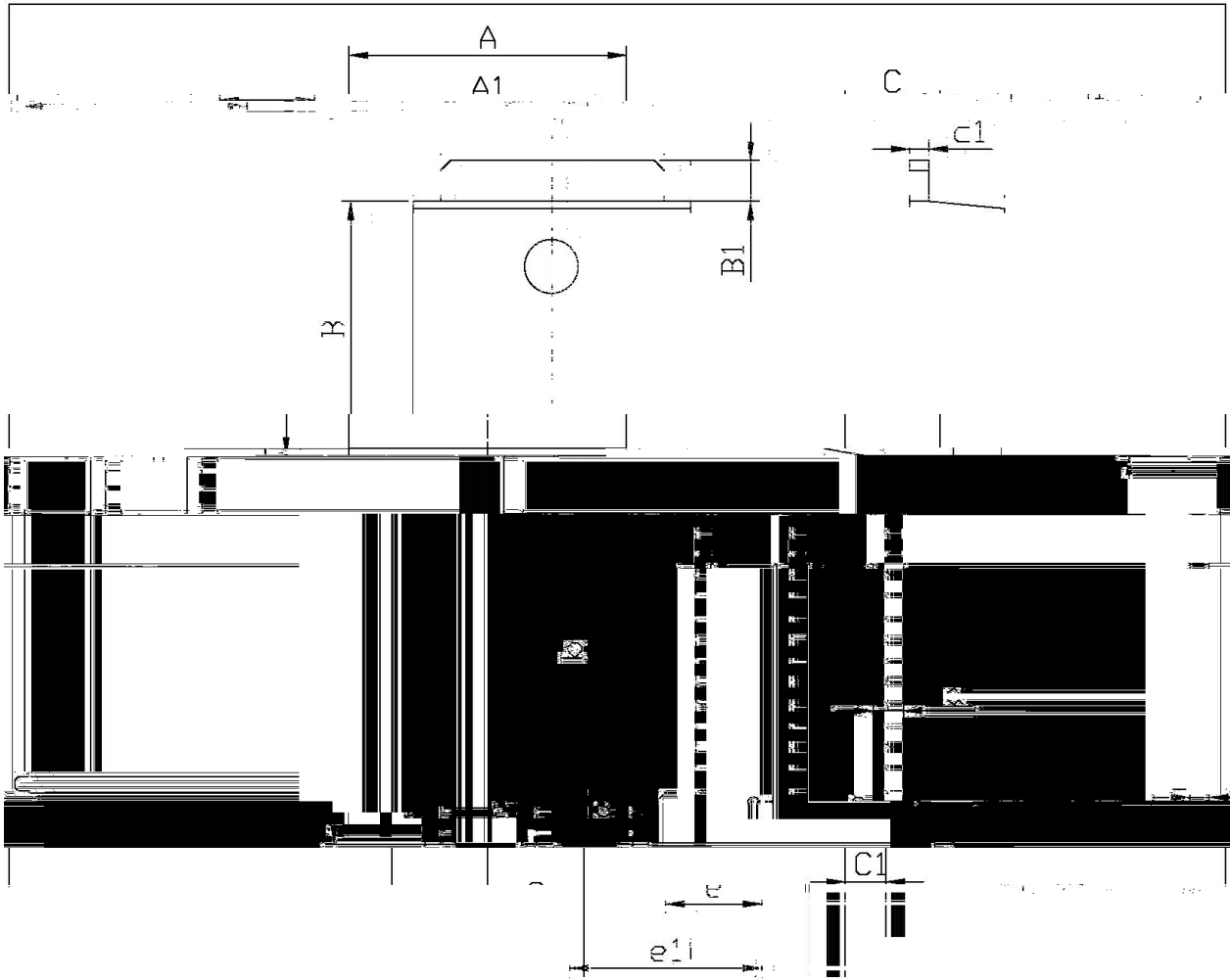
**/ Electrical Characteristic Curve**



**& Test circuits & Typical Application**

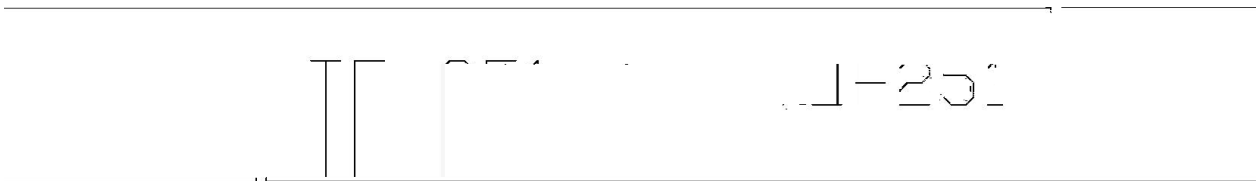


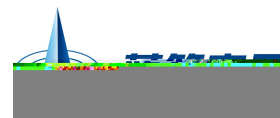
**/ Package Dimensions**



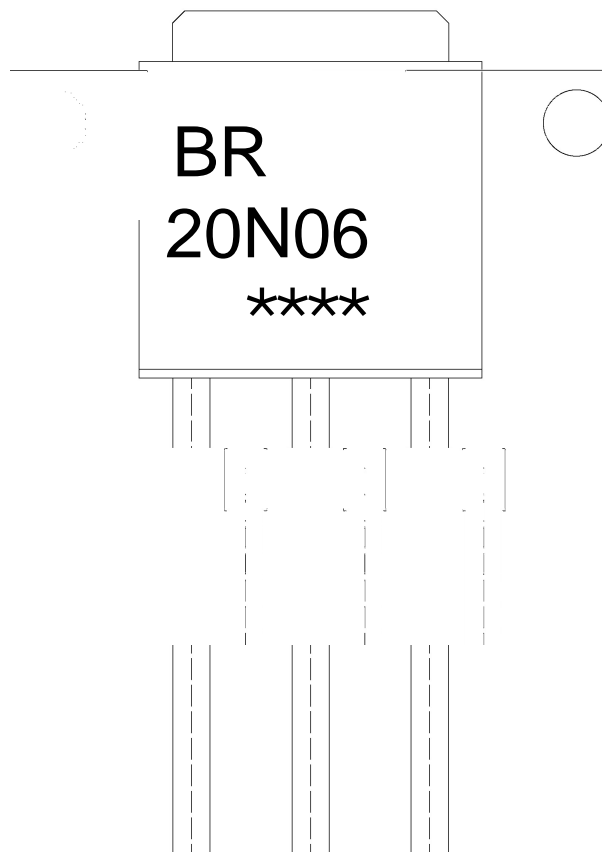
mm 单位.

Symbol	Min	Max	Symbol	Min
A	6.45	6.75	A1	6.45
B	9.00	9.40	B1	9.00
C	0.55	0.65	C1	0.55
e1	4.43	4.78	r	0.25





**/ Marking Instructions**



BR

20N06

\*\*\*\*

Note:

BR: Company Code

20N06: Product Type.

\*\*\*\*: Lot No. Code, code change with Lot No.

