

BRCS1C0P06MC

Rev.B Aug.-2025

5 é / Descriptions

SOT23-3 .> // x P 3 « | • 'ož

6 CHANNEL MOSFET in a SOT23 -3 Plastic Package.

α^a / Features

$V_{DS} = -60V$; $I_D = -3A$

$R_{DS(on)1} @ -10V$ 0 100m Ω (Type.83m Ω)

$R_{DS(on)2} @ -4.5V$ 0 130m Ω (Type.100m Ω)

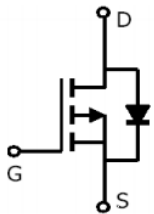
—)í D }ož HF Product.

Đ ÷ / Applications

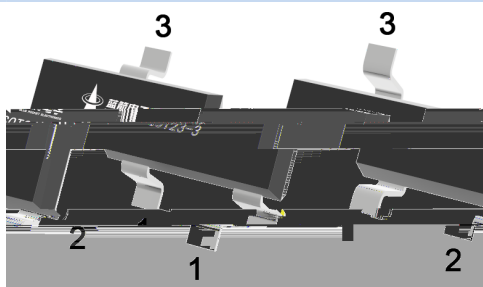
6 = 3 • ĵ ú • ¼ož

PWM application & Load switch.

Ã W] Ô . / Equivalent Circuit



• Ů - æ / Pinning



PIN1 y G

PIN 2 y S

PIN 3 y D

, M V / Marking

• - ~^a ϕož

See Marking Instructions.

BRCS1C0P06MC

Rev.B Aug.-2025



蓝箭电子
BLUE ROCKET ELECTRONICS

DATA SHEET

Parameter	Symbol	Rating	Unit
Drain-Source Voltage	V_{DSS}	-60	V
Gate-Body Leakage Current	I_{GBL}	± 20	μA
Drain Current (Continuous)	I_D	-3	A
Pulse Drain Current	I_{DP}	-16	A
Power Dissipation		1.4	W
Operating and Storage Temperature Range		-55 ~ 150	$^{\circ}C$
Maximum Junction-to-Ambient Thermal Resistance		89	$^{\circ}C/W$

Parameter	Symbol	Test Conditions	Min	Typ	Max	Unit
Gate Threshold Voltage	$V_{GS(th)}$	$V_{DS}=V_{GS}$ $I_D=-250$ A	-1	-1.6	-2.5	V
Static Drain-Source On-Resistance	$R_{DS(on)}$	$V_{GS}=-10V$ $I_D=-2A$		83	100	m Ω

Electrical Characteristic Curve

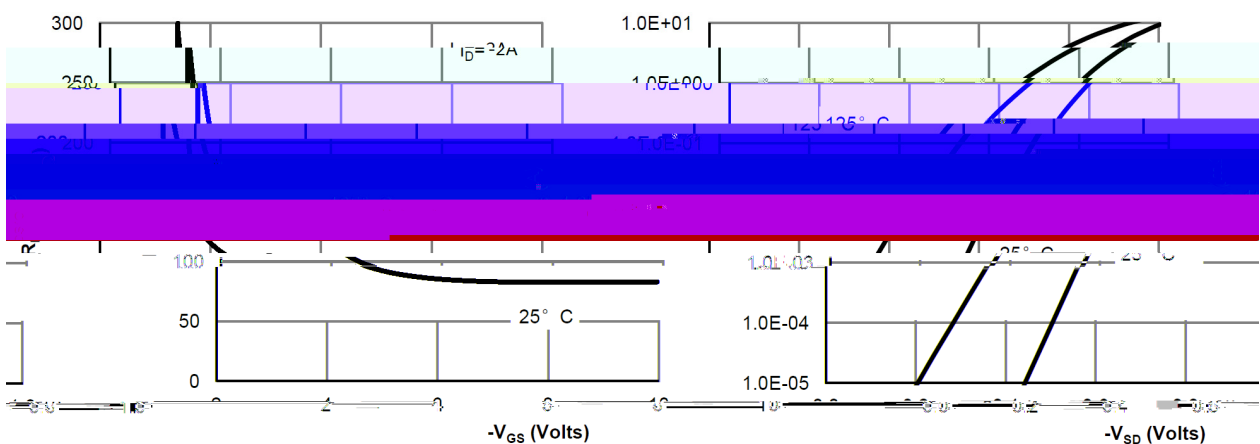
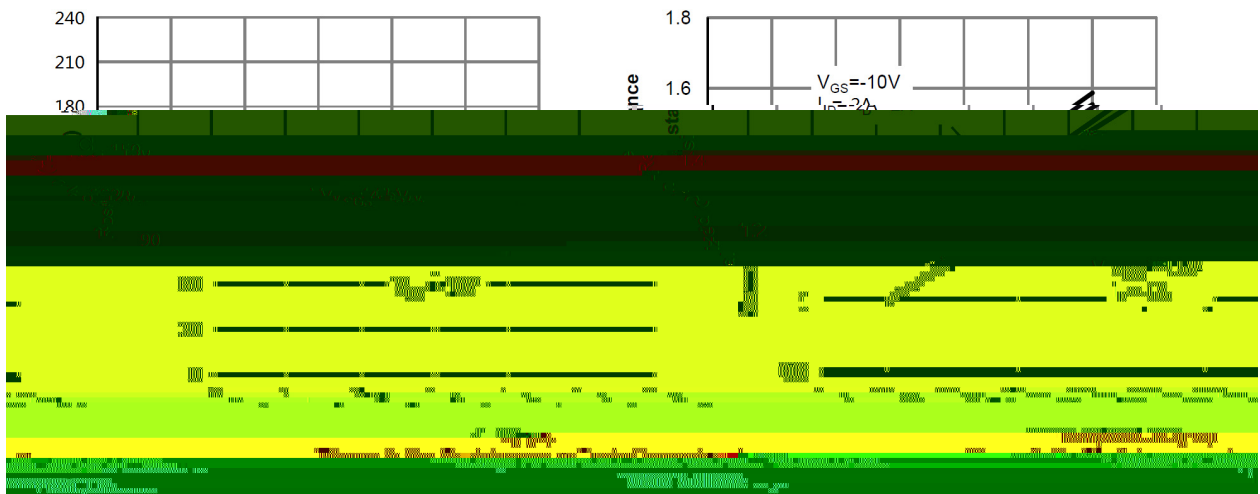
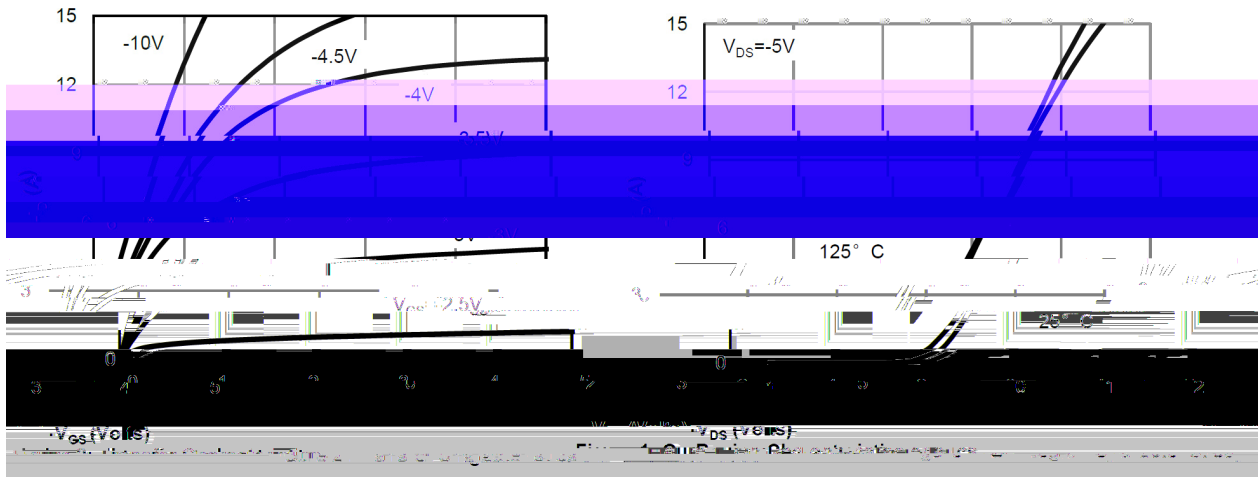
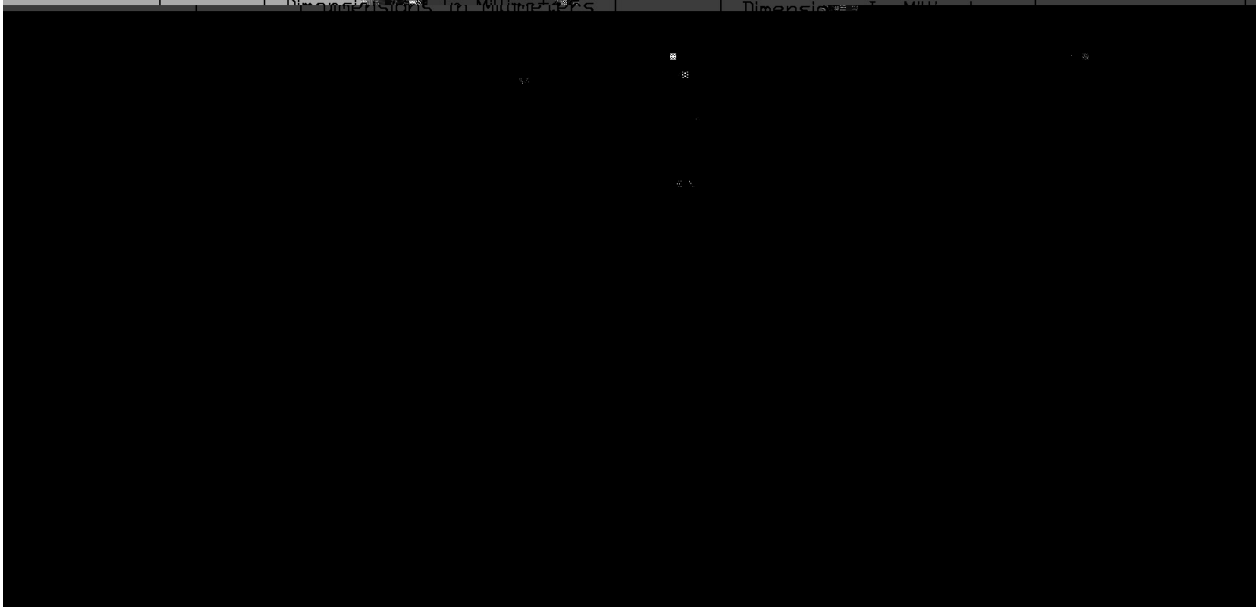
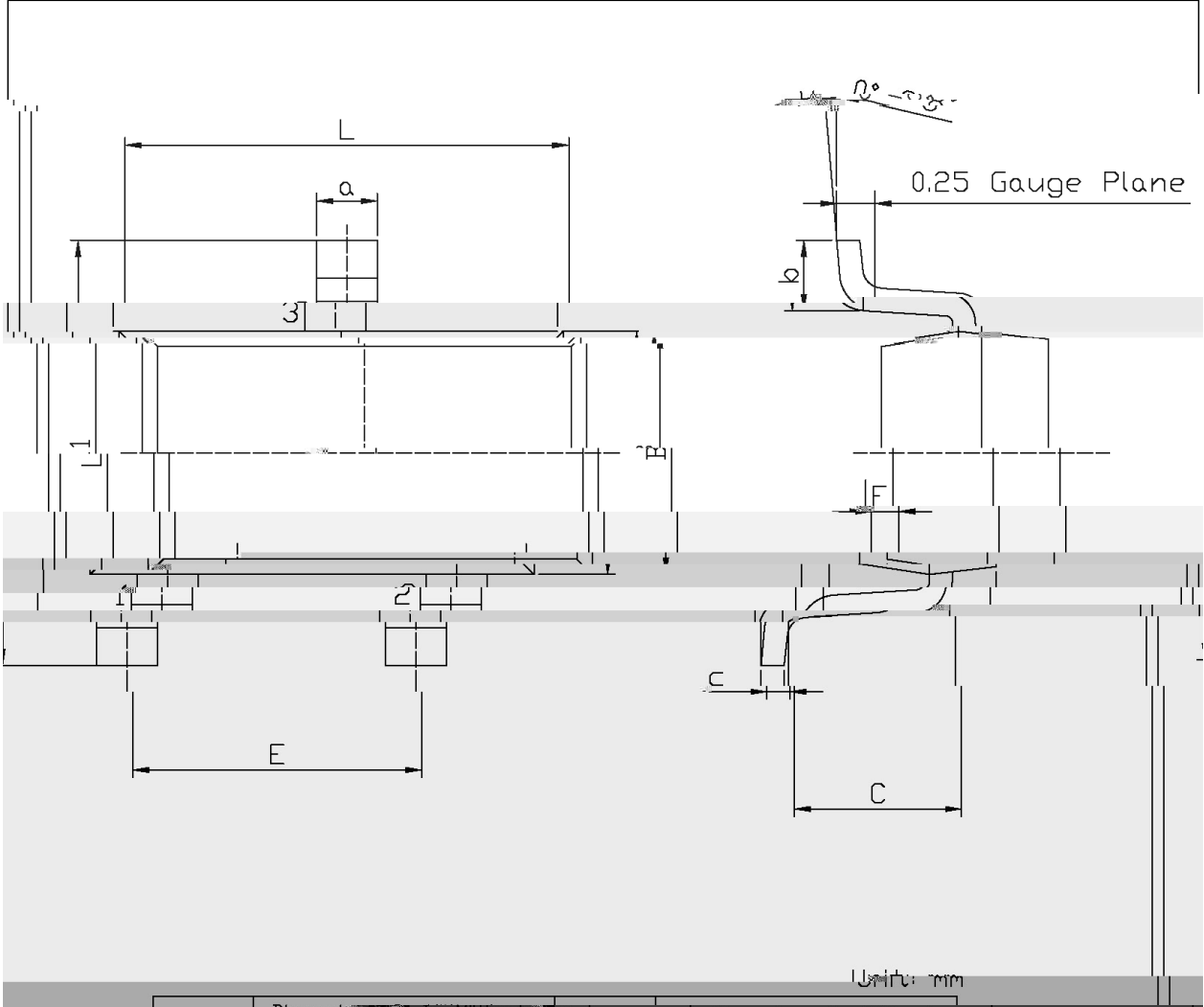


Figure 5: On-Resistance vs. Gate-Source Voltage

Figure 6: Body-Diode Characteristics

BRCS1C0P06MC

$\varnothing \square =) \phi$ / Package Dimensions



BRCS1C0P06MC

Rev.B Aug.-2025

BRCS1C0P06MC

Rev.B Aug.-2025



DATA SHEET

šWD t...•Žϕ (x/) / :KSVKXGZ[XK 6XULORK LUX /8 8KLRU] 9URJKXOTM 6

^a ϕ y

- 1o• Ä ½ “ † 150 ½180 - k ž • 60 ½90sec;
- 2o• Q › “ † 245 r5 - k ž • 4 Ò 5 r0.5sec;
- 3o•D N ò i Ò 0 , † 2 ½10 - /sec.

Note:

- 1.Preheating:150~180 - , Time:60~90sec.
- 2.Peak Temp.:245 r5 - , Duration:5 r0.5sec.
- 3. Cooling Speed: 2~10 - /sec.

ÂD /Cã p ~ »] / Resistance to Soldering Heat Test Conditions

“ † y 260 r5 - ž • y 10 r1 sec. Temp.:260±5 Time:10±1 sec

G P á / Packaging SPEC.

2 & x / REEL

Package Type 7>û ~ E	Units ;>û !H					Dimension ;>û p . (unit /mm ³)		
	Units/Reel / --	Reels/Inner Box -- /-	Units/Inner Box /-	Inner Boxes/Outer Box - /1ç	Units/Outer Box /1ç	Reel	Inner Box	Outer Boxç ÂD4€ iSv5v7T L ,