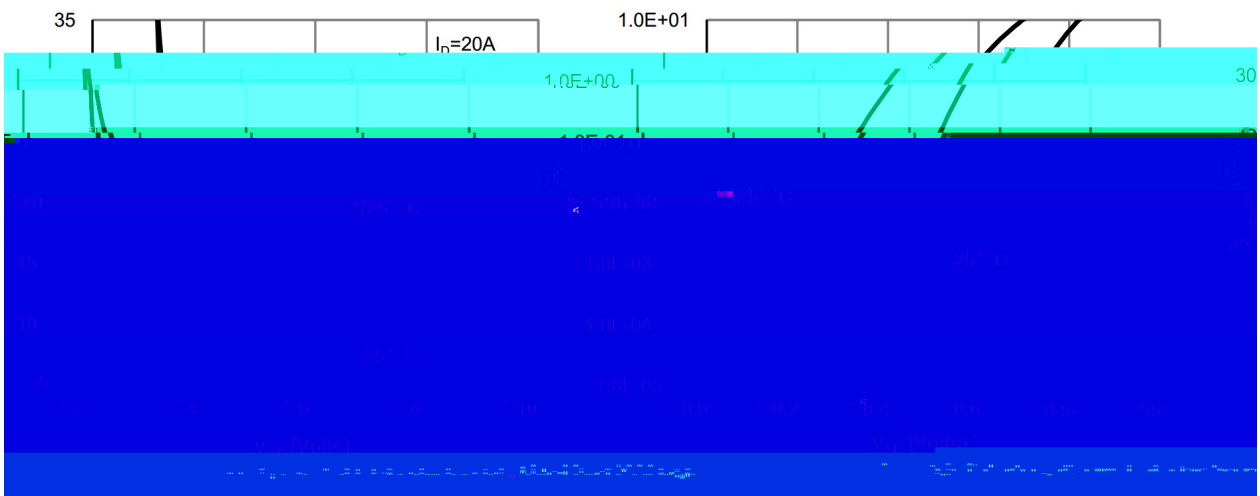
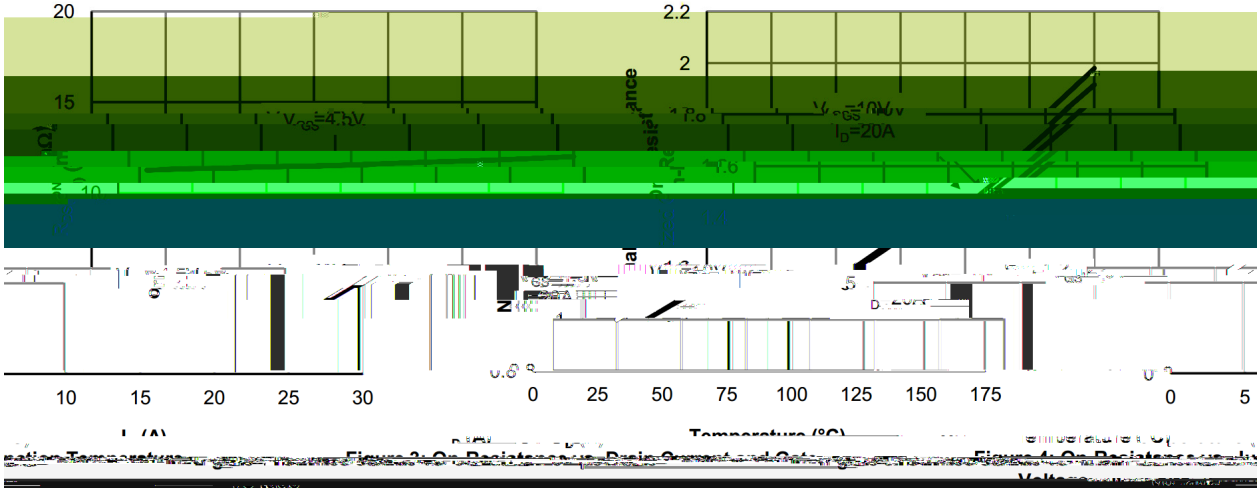




Parameter	Symbol	Rating	Unit
Drain-Source Voltage	$V_{DSS}$	100	V
Drain Current	$I_D(T_c=25^\circ C)$	65	A
Pulsed Drain Current	$I_{DM}$	168	A
Gate-Source Voltage	$V_{GS}$	f 20	V

@ f Parameter	... Z Symbol	y i Ú ^ Test Conditions	Â 4 › Min	Á ° › Typ	Â Ý › Max	% y Unit
Turn-On Delay Time	t <sub>d(on)</sub>	V <sub>GS</sub> =10V V <sub>DS</sub> =50V R <sub>L</sub> =2.5 R <sub>GEN</sub> =3		8.7		ns
Turn-On Rise Time	t <sub>r</sub>			3.5		
Turn-Off Delay Time	t <sub>d(off)</sub>			25		
Turn-Off Fall Time						

Electrical Characteristic Curve



Electrical Characteristic Curve

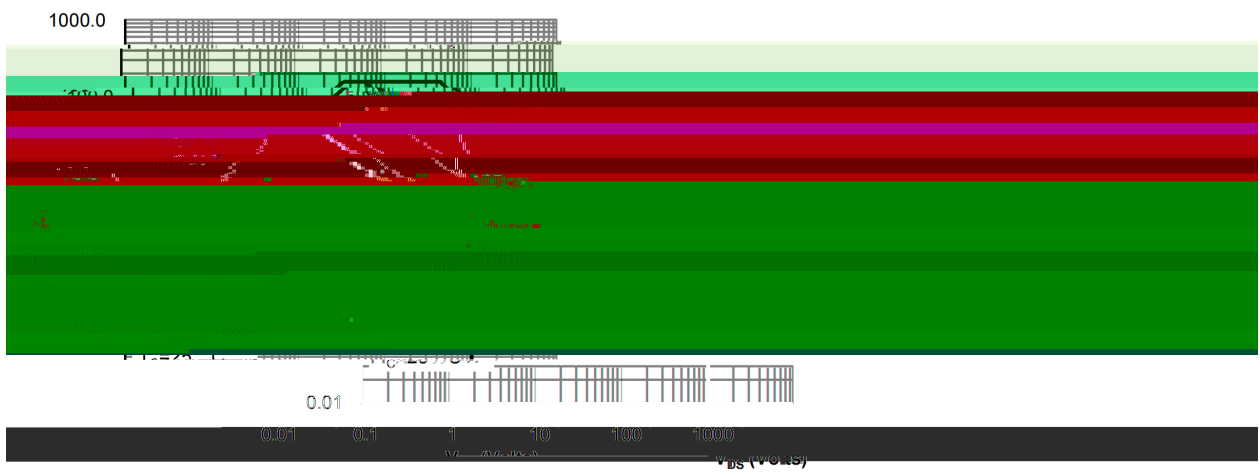
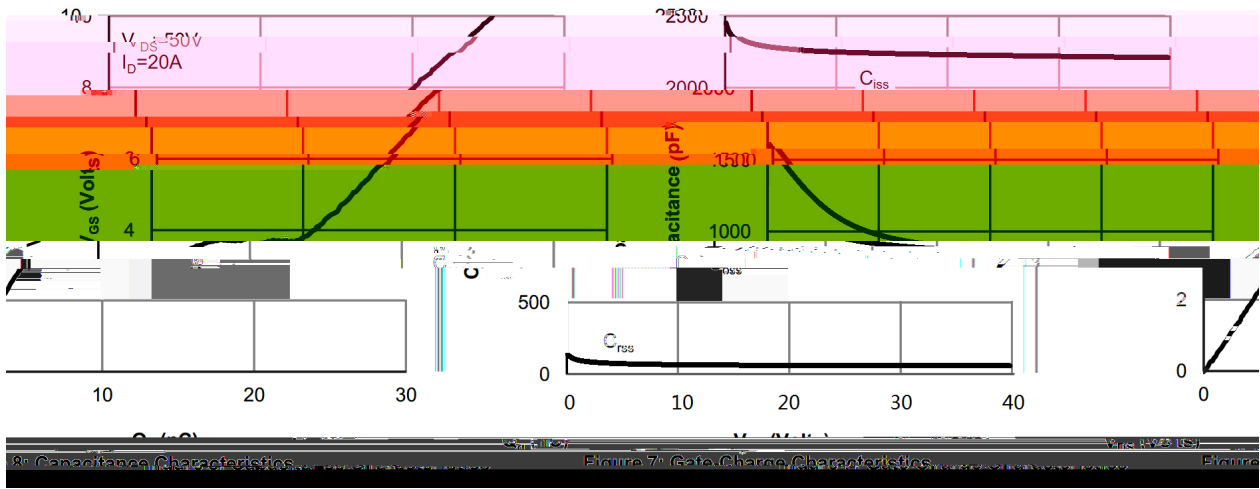


Figure 9: Maximum Forward Biased Safe Operating Area

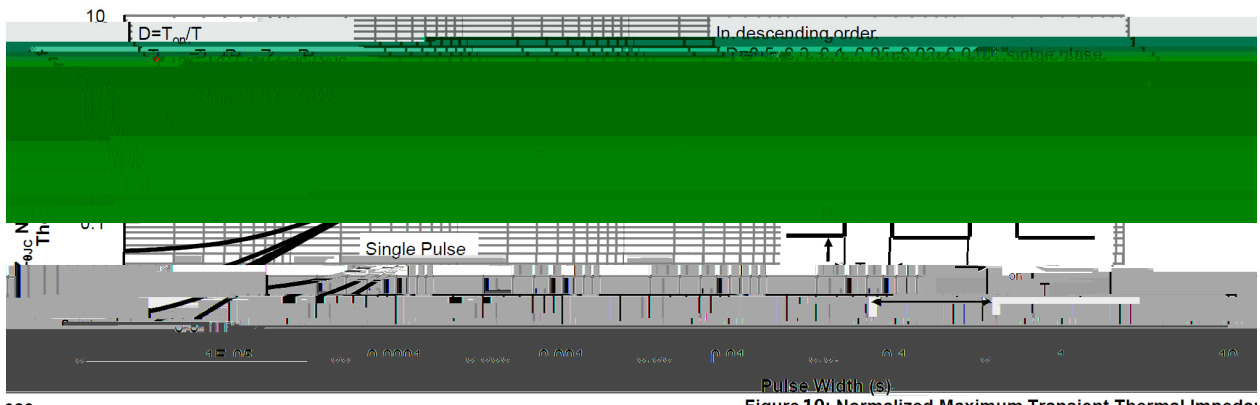
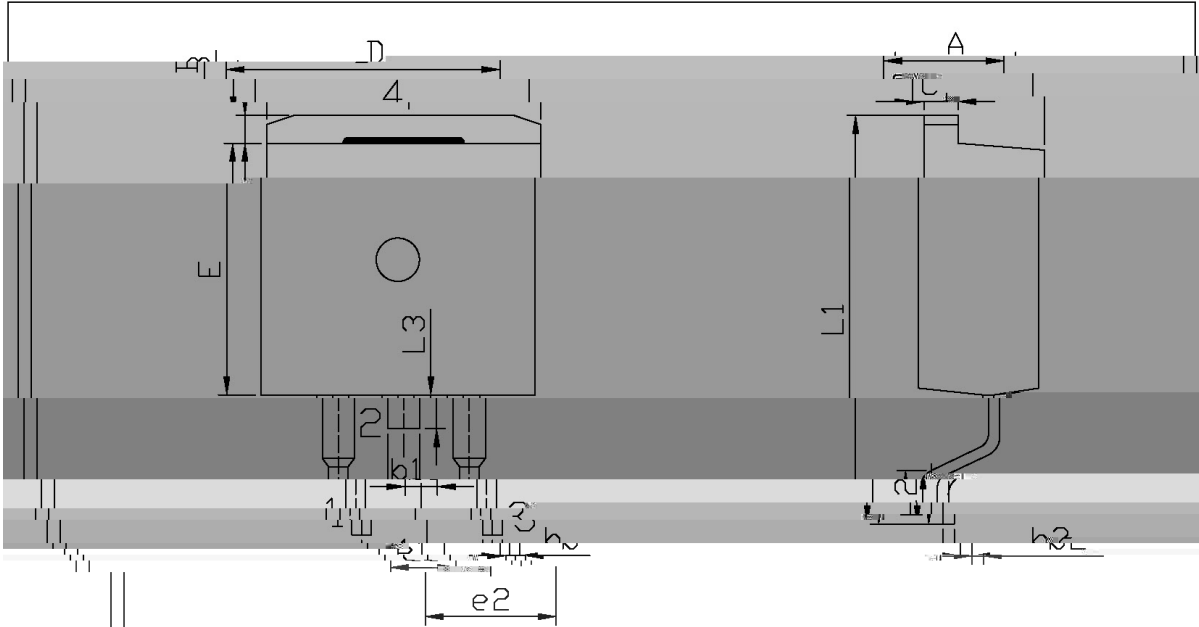


Figure 10: Normalized Maximum Transient Thermal Impedance

∅ □ = ) ∅ / Package Dimensions

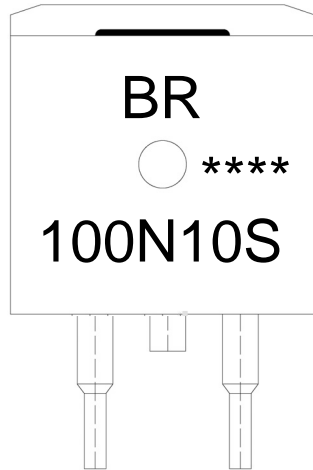


单位: mm

Dimensions in Millimeters

Max	Min	Max	Min
9.00	4.30	4.70	9.00

, M y f / Marking Instructions



a ç y  
( 8 y , [ W A  
4 9 y ° Z W A  
y ÿ D Z W A k š ÿ D Z J

Note:

- BR: Company Code
- 100N10S: Product Type Code
- \*\*\*\*: Lot No. Code, code change with Lot No



šWD t...•Žç (x/ ) / :KSVKXGZ[XK 6XULORK LUX /8 8KLRU] 9URJKXOTM 6


ª ç y

1o• Ä ½ “ † 150 ½180 - k ž • 60 ½90sec;

2o• Q › “ † 245 r5 - k ž • 4 Ò 5 r0.5sec;

3o•D N ò i Ò 0 , † 2 ½10 - /sec.

Note:

1.Preheating:150~180 - , Time:60~90sec.

2.Peak Temp.:245 r5 - , Duration:5 r0.5sec.

3. Cooling Speed: 2~10 - /sec.

ÂD /Cã p ¯ » ] / Resistance to Soldering Heat Test Conditions

605 r5 - (/ -5.7(Park) 5.1266(SBP) 5.0116(Tc) 4.7/1 BTx03.4485 32.3713 TD .0004 Tc -35.6 5309:602  
† † †