

BRCS060N04DP

Rev.A Aug.-2023

/ Descriptions

TO-252 N

N-CHANNEL MOSFET in a TO-252 Plastic Package.

/ Features

$V_{DS}(V)=40V$ $I_D=70A$

$R_{DS(ON)}@10V<6m$ (Typ. 5.6mR)

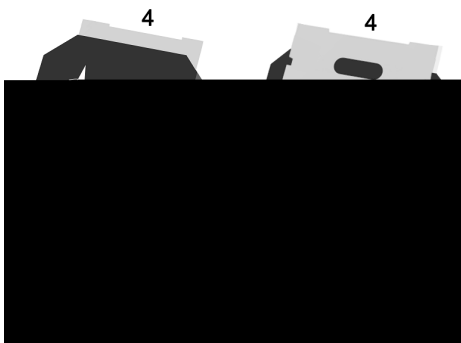
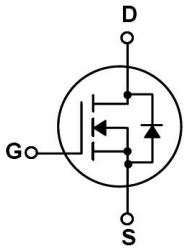
$R_{DS(ON)}@4.5V<12m$ (Typ. 10.8mR)

HF Product.

/ Applications

Suited for low voltage applications such as automotive, DC/DC Converters, and high efficiency switching for power management in portable and battery operated products, Meet the stringent requirements of automotive applications.

/ Equivalent Circui



PIN1 G

PIN 2 D

PIN 3 S

PIN 4 D

/ Marking

See Marking Instructions.

BRCS060N04DP

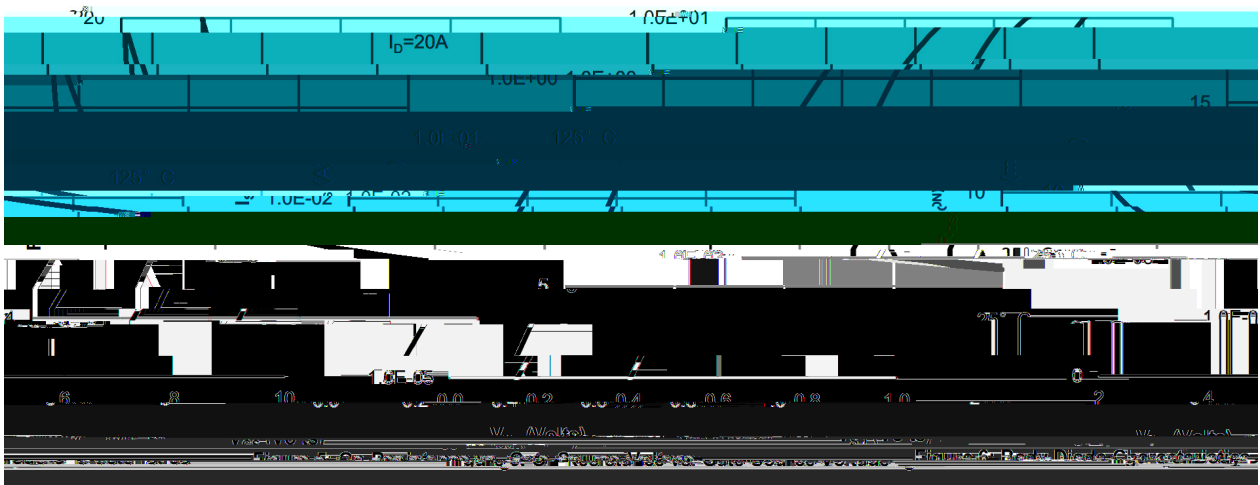
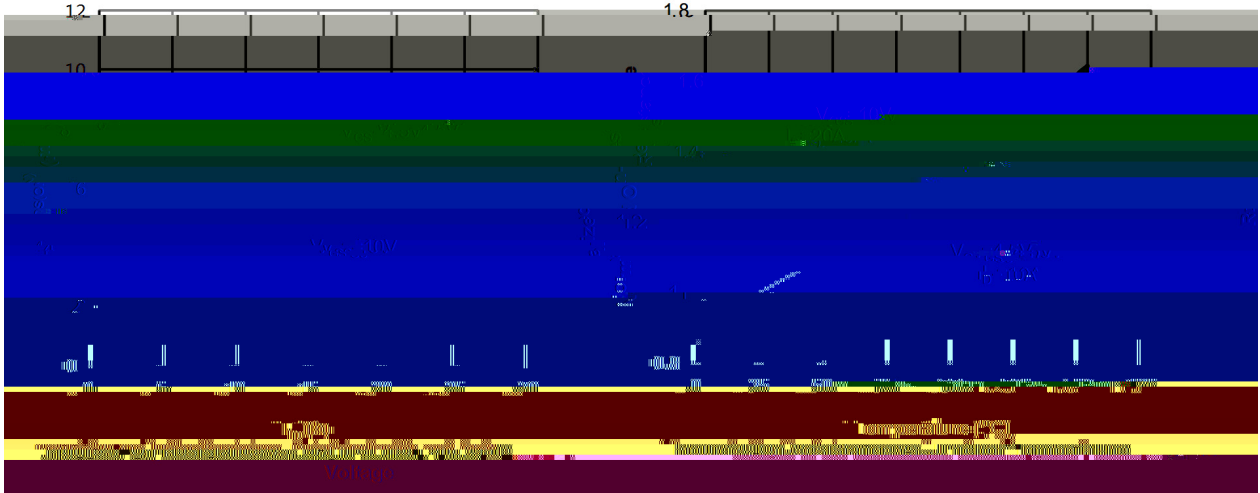
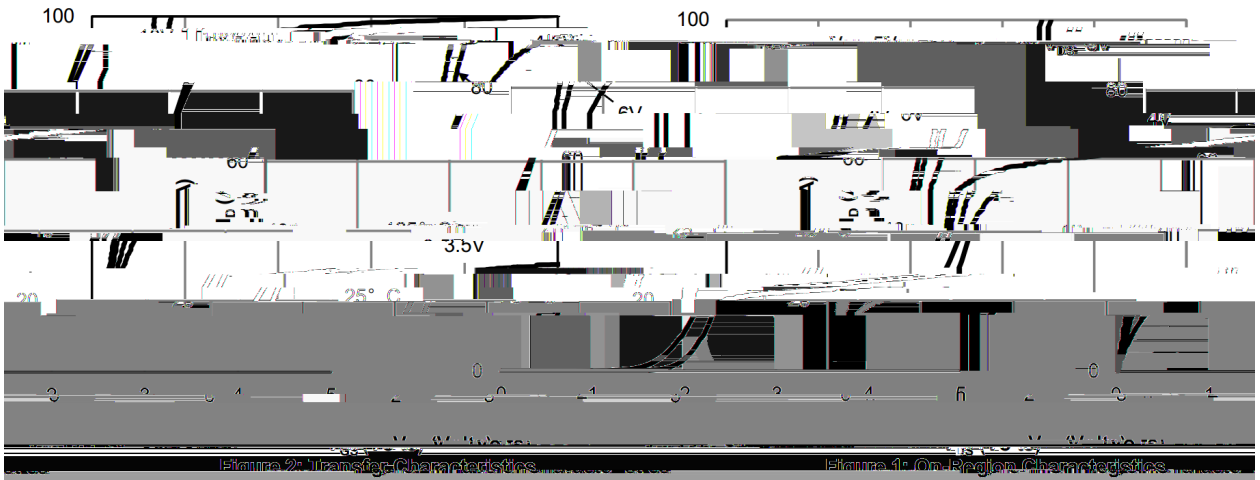
Rev.A Aug.-2023

Parameter		Symbol	Rating	Unit
Drain-Source Voltage		V_{DSS}	40	V
Drain Current		$I_D(T_C=25^\circ\text{C})$	70	A
Drain Current - Pulsed		I_{DM}	159	A
Gate-Source Voltage		V_{GS}	± 20	V
Avalanche Current		I_{AS}	24.5	A
Single Pulsed Avalanche Energy(L=0.5mH)		E_{AS}	192	mJ
Power Dissipation		$P_D(T_C=25^\circ\text{C})$	50	W
Junction and Storage Temperature Range		T_J, T_{STG}	-55 to 150	
Thermal Resistance-Junction to Ambient	t 10s	R_{JA}	20	/W
	Steady-State		50	
Thermal Resistance-Junction to Case	Steady-State	R_{JC}	2.5	

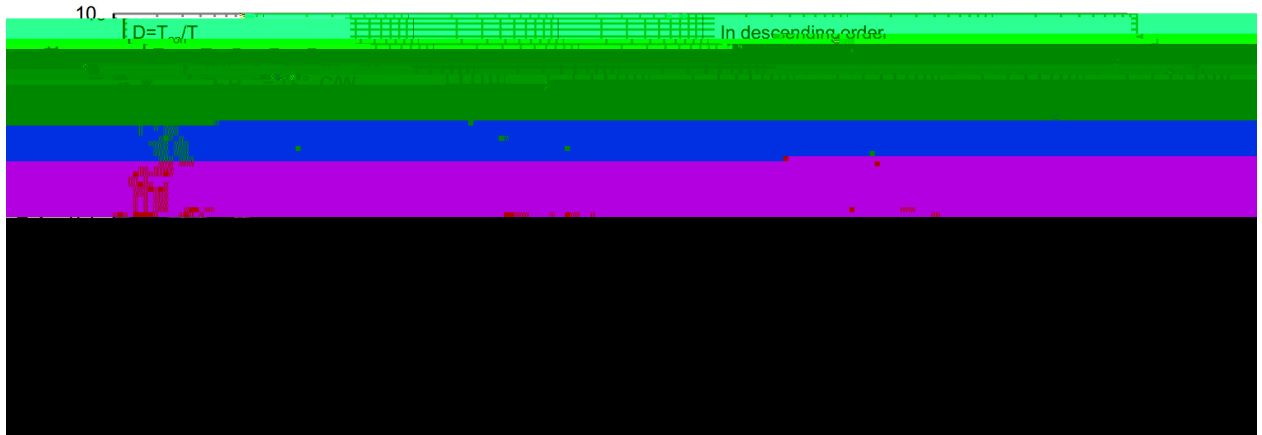
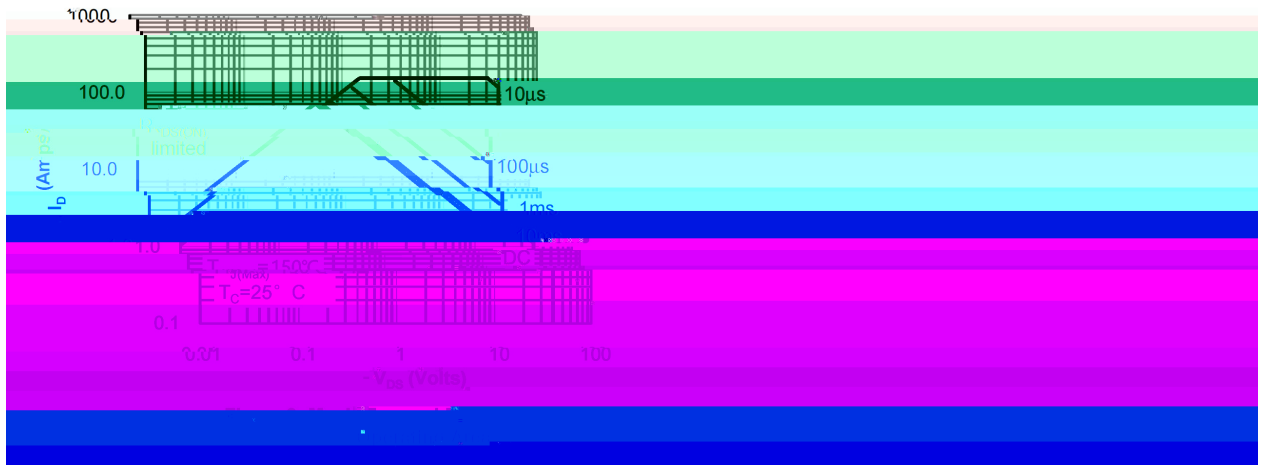
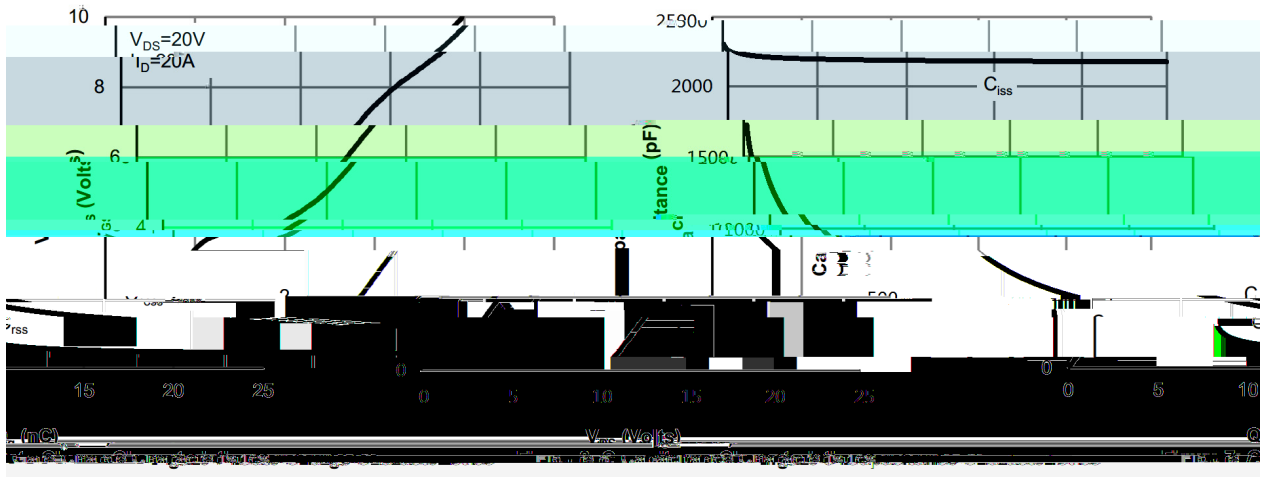
Parameter	Symbol	Test Conditions	Min	Typ	Max	Unit
Drain-Source Breakdown Voltage	BV_{DSS}	$V_{GS}=0V$ $I_D=250\text{ A}$	40	46		V
Zero Gate Voltage Drain Current	I					

Parameter	Symbol	Test Conditions	Min	Typ	Max	Unit
-----------	--------	-----------------	-----	-----	-----	------

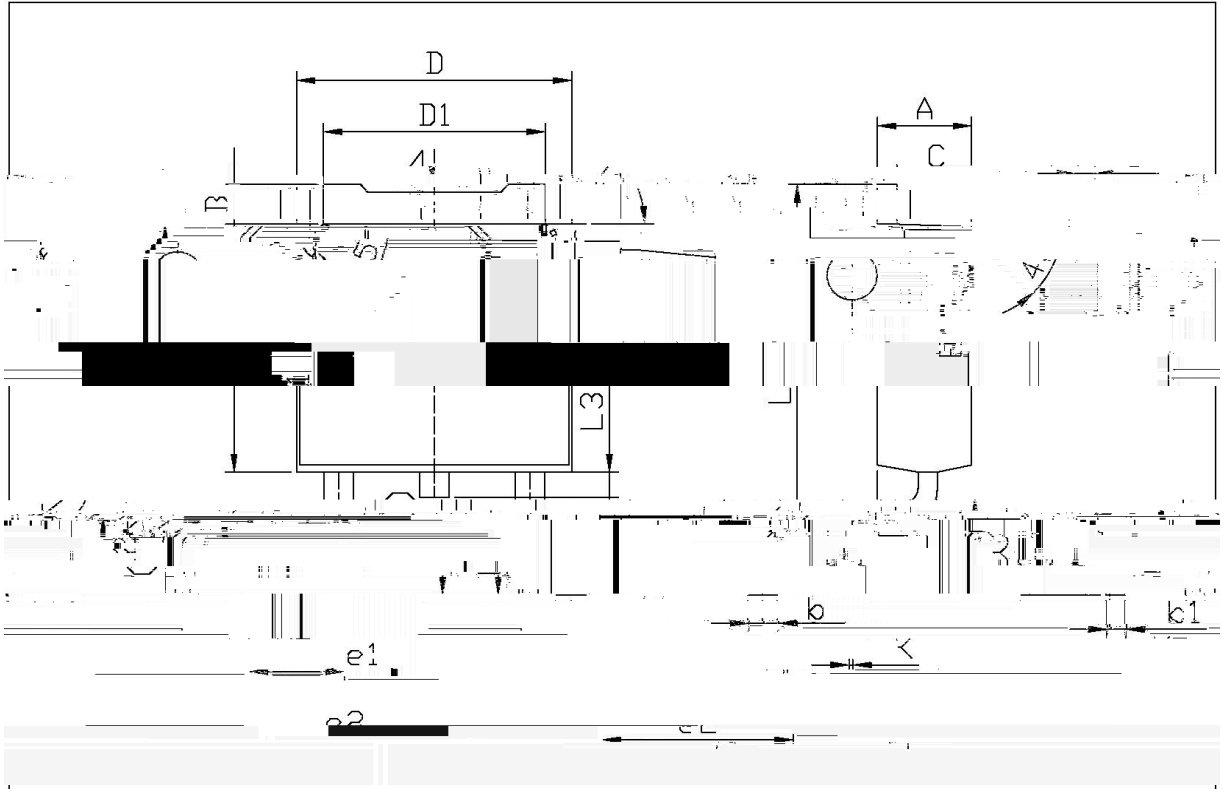
/ Electrical Characteristic Curve



/ Electrical Characteristic Curve



/ Package Dimensions

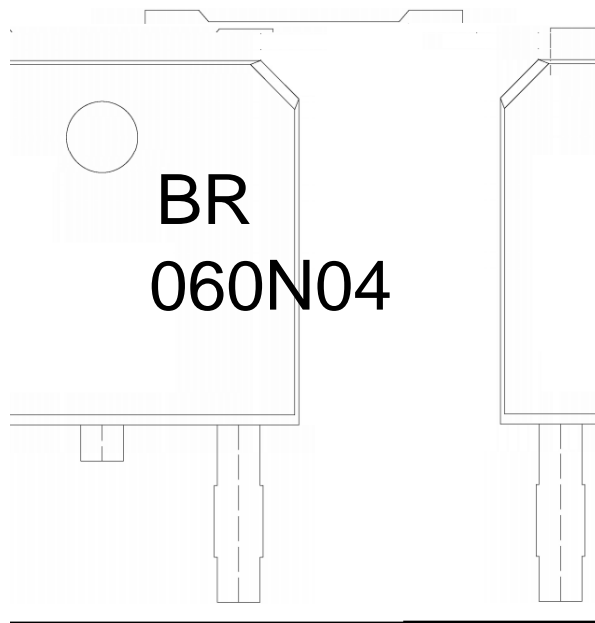


单位: mm

Dimensions		Millimeters		Dimensions		In Millimeters	
Min	Max	Symbol	Value	Symbol	Value	Symbol	Value
	2.34	B	0.95	e1	2.24		
	4.73		0.70		4.27		
	10.26		0.75		0.87		
	25.00		0.45		1.78		
	0.00		0.55		0.50		
	0.00		0.10		0.50		
		D1	5.10		5.50		

TO-252

/ Marking Instructions



BR

060N04

Note:

BR: Company Code

060N04: Product Type Code

***: Lot No. Code, code change with Lot No

BRCS060N04DP