

B RCS006N03SSL

Rev.C Jan.-2026



LFPAK5x6

BRCs006N03SSL

Rev.C Jan.-2026



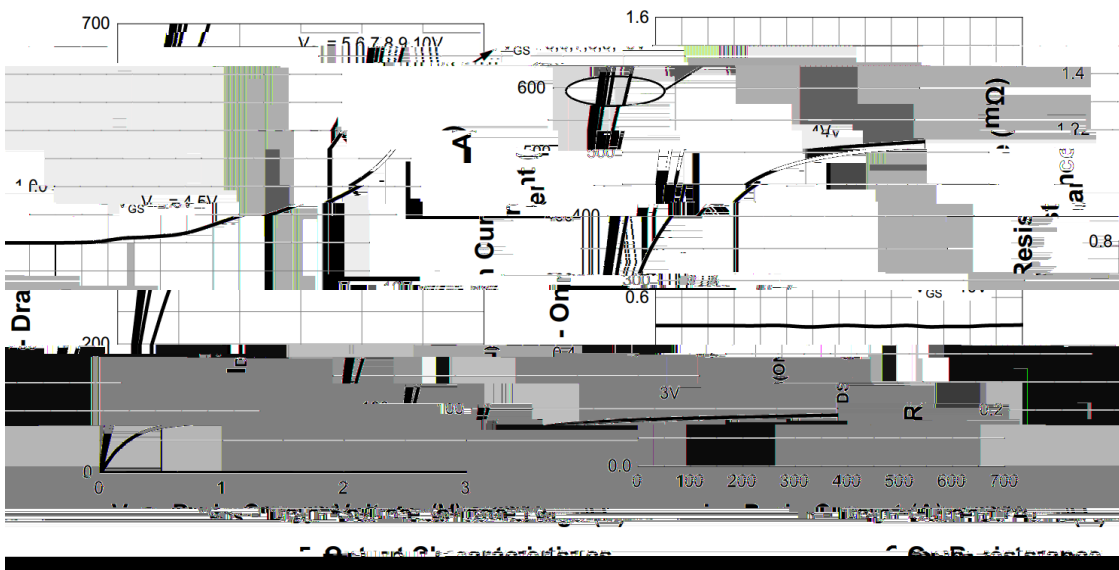
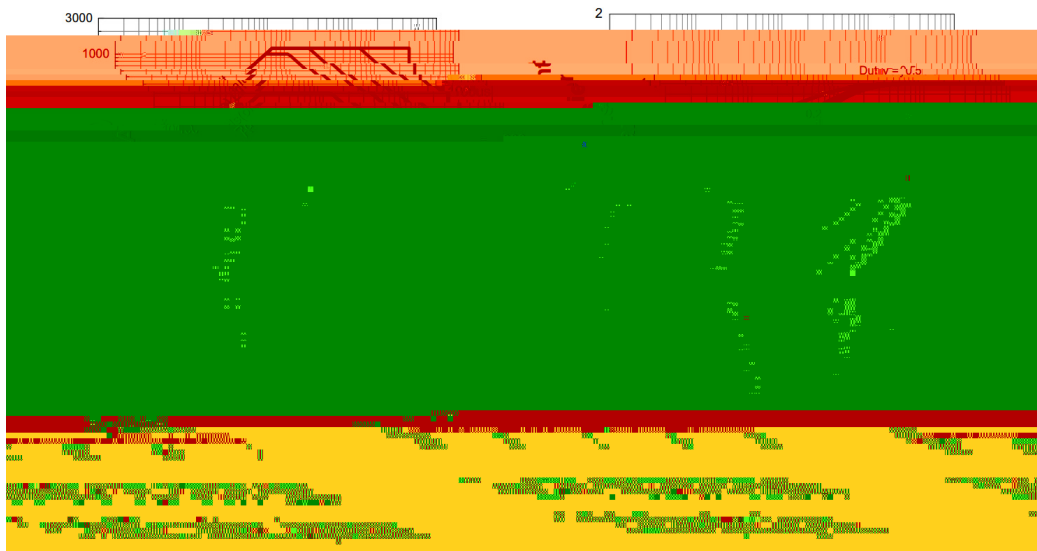
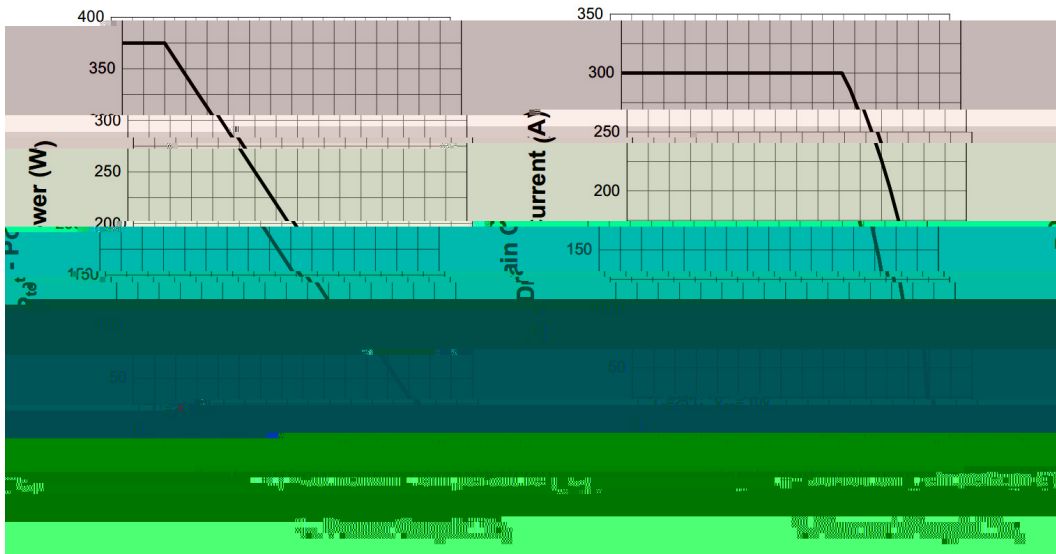
DATA SHEET

Parameter	Symbol	Rating	Unit
Drain-Source Voltage	V_{DS}	30	V
Drain Current	$I_D(T_C=25^\circ\text{C})$	300	A
	$I_D(T_C=100^\circ\text{C})$	300	A
Pulsed Drain Current	I_{DM}	1200	A
Gate-Source Voltage	V_{GS}	20	V
Single Pulsed Avalanche Energy $L=1.0\text{mH}$	E_{AS}	1624	mJ
Continuous-Source Current	I_S	300	A
Total Power Dissipation	$P_D(T_C=25^\circ\text{C})$	375	W
Junction and Storage Temperature Range	T_J, T_{STG}	-55 to 175	

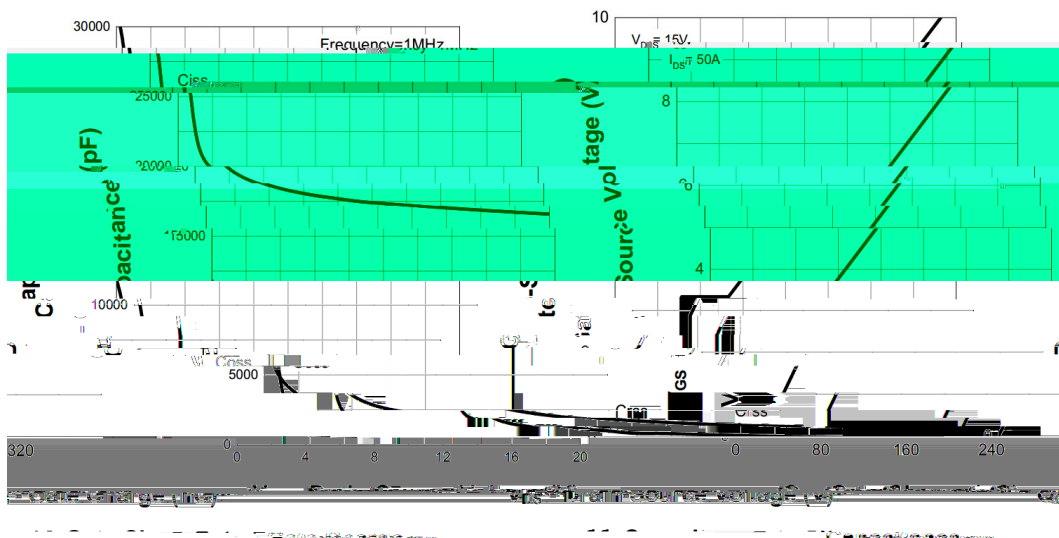
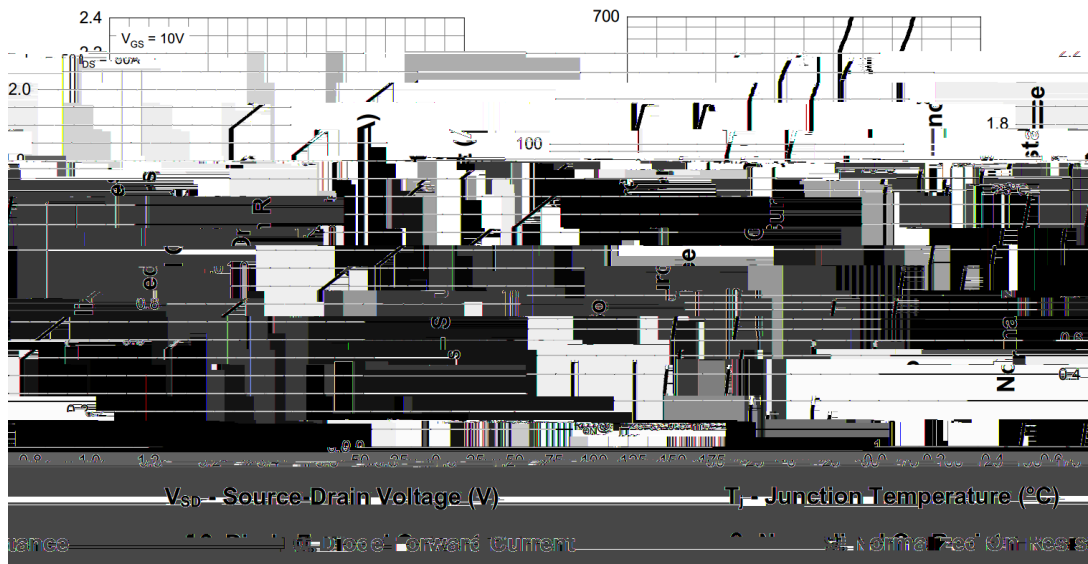
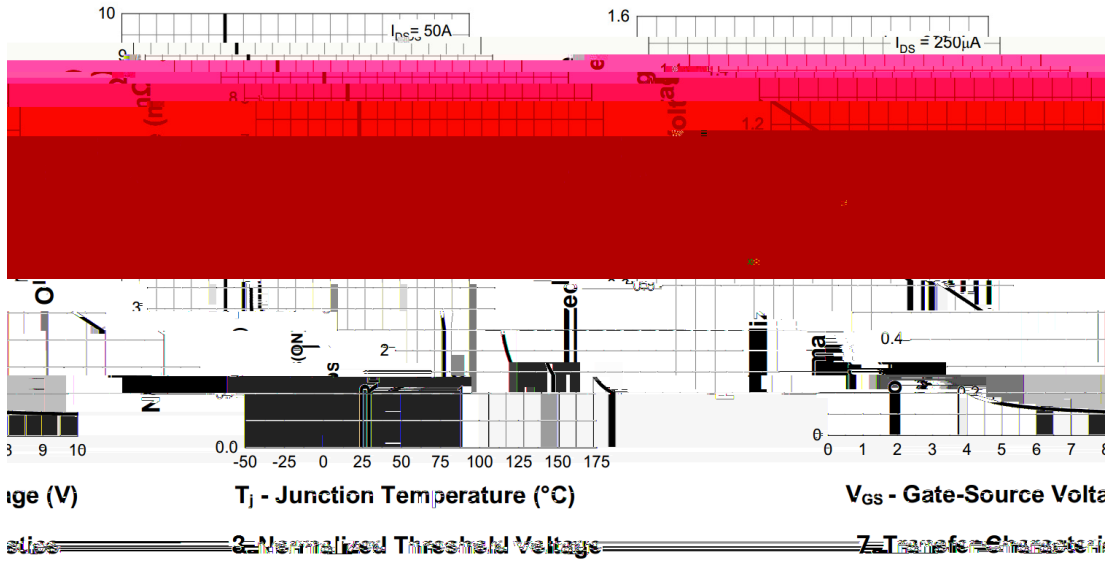
/ Electrical Characteristics(Ta=25)

Parameter	Symbol	Test Conditions	Min	Typ	Max	Unit
Total Gate Charge	Q_g	$V_{GS}=10V, V_{DS}=15V, I_D=50A$		306		nC
Gate Source Charge	Q_{gs}			63		
Gate Drain Charge	Q_{gd}			44		
Turn-On Delay Time	$t_{d(on)}$	$V_{GEN}=10V, V_{DS}=15V, R_L=0.3, R_G=3.9, I_{DS}=50A$		23		ns
Turn-On Rise Time	t_r			151		
Turn-Off Delay Time	$t_{d(off)}$			249		
Turn-Off Fall Time	t_f			127		

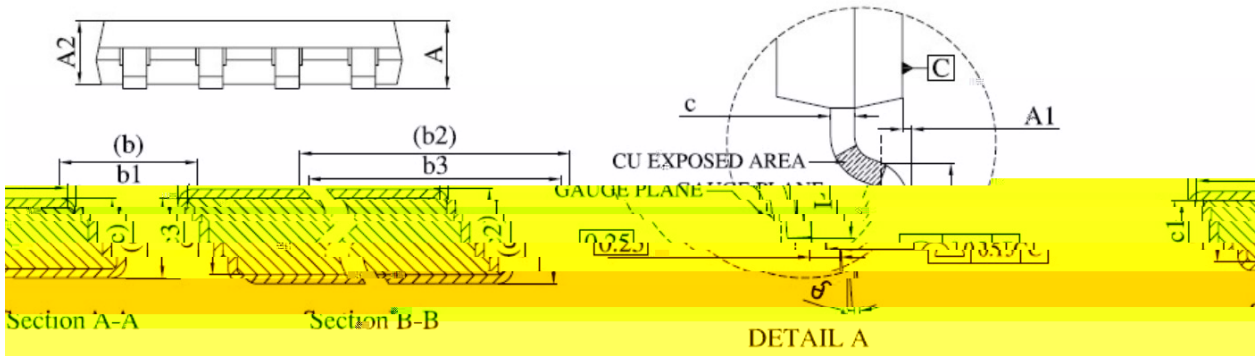
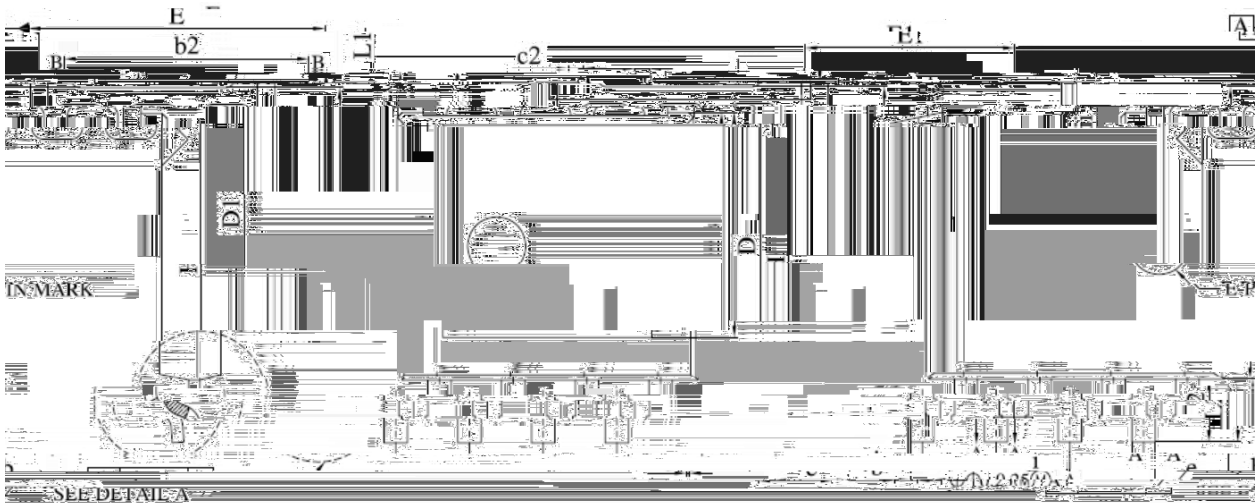
/ Electrical Characteristic Curve



/ Electrical Characteristic Curve



/ Package Dimensions



Dimensions in Millimeters				Dimensions in Millimeters			
Symbol	MIN.	MAX.		Symbol	MIN.	MAX.	
A	1.00	1.09	1.50	1.20	E	4.95	5.30
A1	0.00	0.15		E1	3.50	3.70	
A2	0.98	1.12		e	1.27 BSC.		
b	0.35	0.50		H	5.95	6.25	
b1	0.32	0.46		i		0.25	

/ Marking Instructions



BR

006N03S

Note

BR: Company Code

006N03S: Product Type Code

****: Lot No. Code, code change with Lot No.

BRCS006N03SSL

Rev.C Jan.-2026



蓝箭电子
BLUE ROCKET ELECTRONICS

DATA SHEET

() / Temperature Pro