

**/ Descriptions**

Silicon NPN transistor in a SOT-323 Plastic Package.

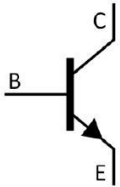
**/ Features**

High current, low voltage complementary pair with BC807W.

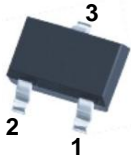
**/ Applications**

General purpose switching and amplification.

**/ Equivalent Circuit**



**/ Pinning**



PIN1 Emitter      PIN 2 Base      PIN 3 Collector

**/ Marking**

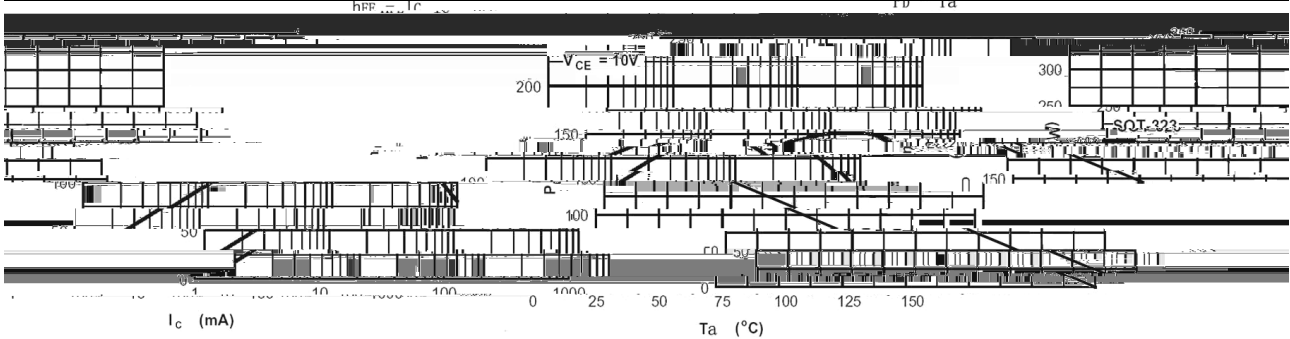
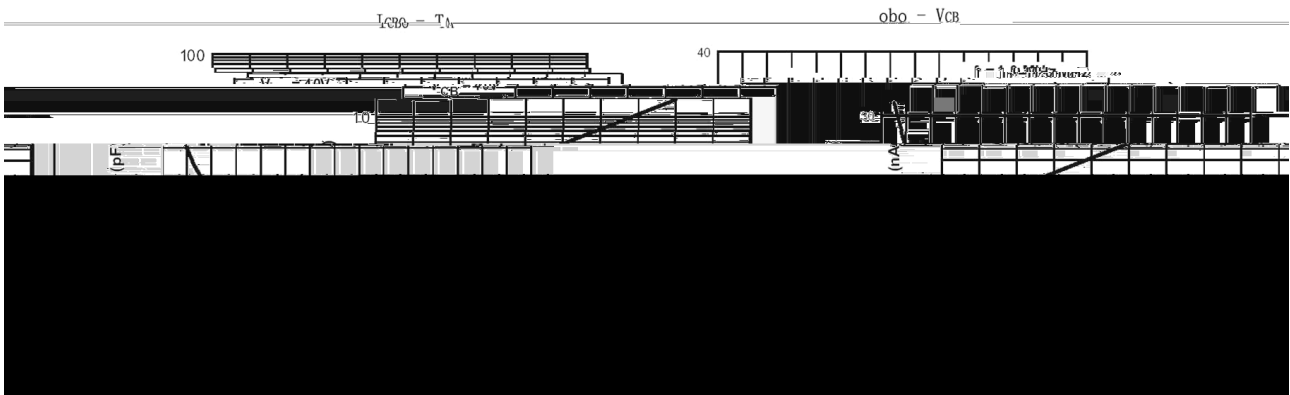
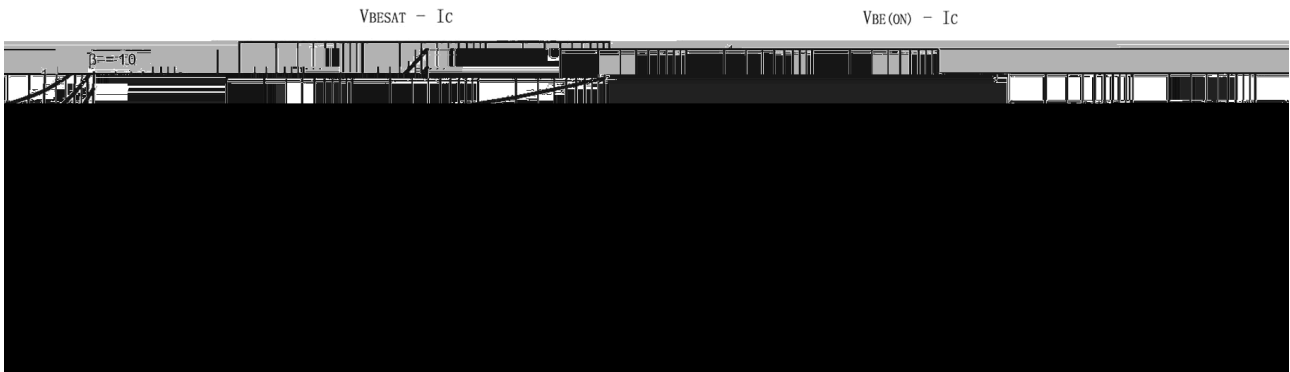
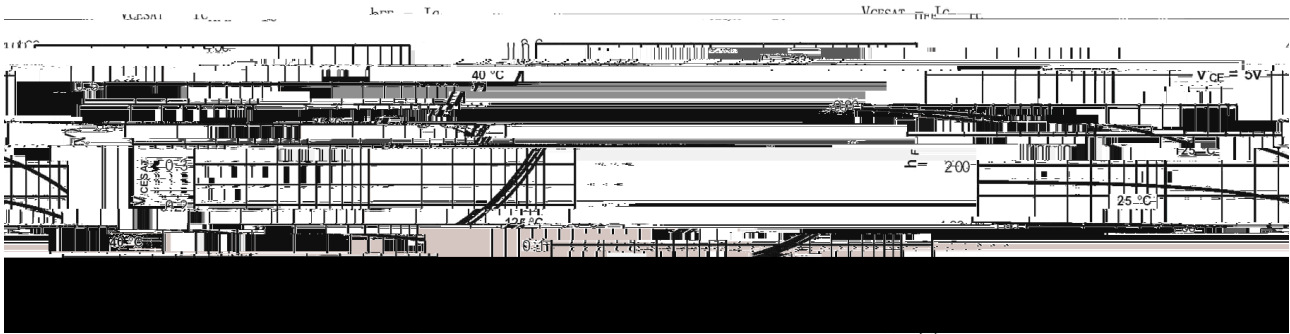
$h_{FE}$ Classifications Symbol	16	25	40
$h_{FE}$ Range	100 250	160 400	250 600
Marking	H6A	H6B	H6C

Parameter	Symbol	Rating	Unit
Collector to Base Voltage	$V_{CBO}$	50	V
Collector to Emitter Voltage	$V_{CEO}$	45	V
Emitter to Base Voltage	$V_{EBO}$	5.0	V
Collector Current - Continuous	$I_C$	500	mA
Peak Collector Current - Continuous	$I_{CM}$	1.0	A
Collector Power Dissipation	$P_C$	200	mW
Junction Temperature	$T_j$	150	
Storage Temperature Range	$T_{stg}$	-55 150	

Parameter	Symbol	Test Conditions	Min	Typ	Max	Unit
Collector Cut-Off Current	$I_{CBO}$	$V_{CB}=20V$ $I_E=0$			5.0	$\mu A$
Emitter Base Cut-Off Current	$I_{EBO}$	$V_{EB}=5.0V$ $I_C=0$			0.1	$\mu A$
DC Current Gain	$h_{FE}$	$V_{CE}=1.0V$ $I_C=100mA$	100		600	
Collector to Emitter Saturation Voltage	$V_{CE(sat)}$	$I_C=500mA$ $I_B=50mA$			0.7	V
Base to Emitter Voltage	$V_{BE}$	$V_{CE}=1.0V$ $I_C=500mA$			1.2	V

C

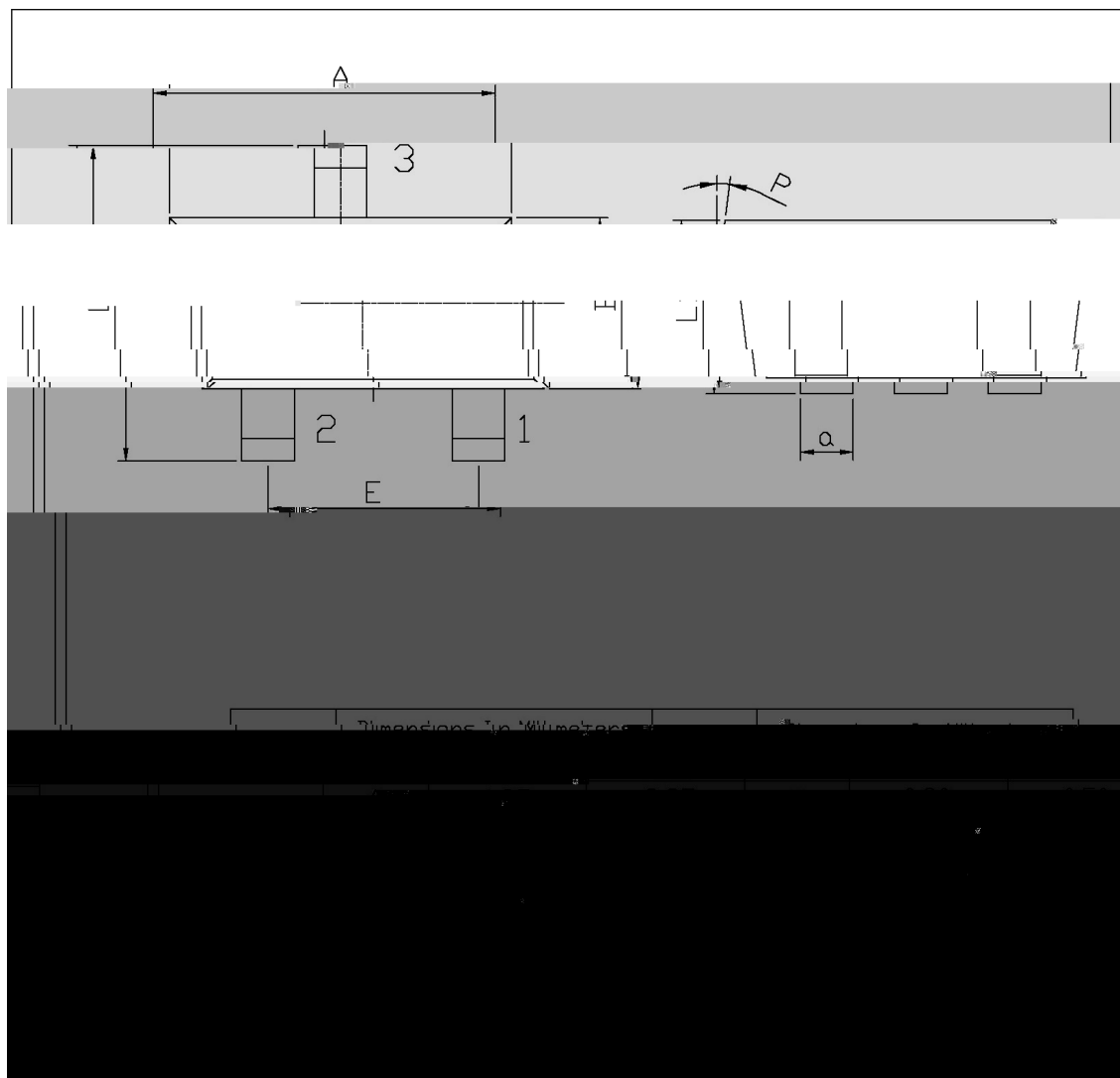
/ Electrical Characteristic Curve



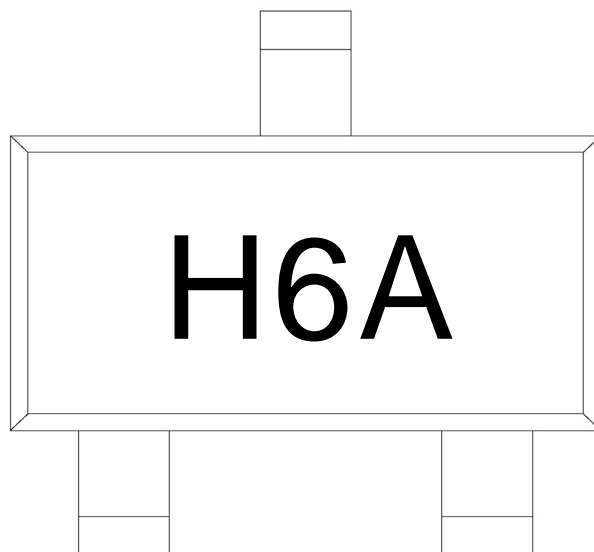
/ Package Dimensions

SOT-323

单位: mm



/ Marking Instructions



H

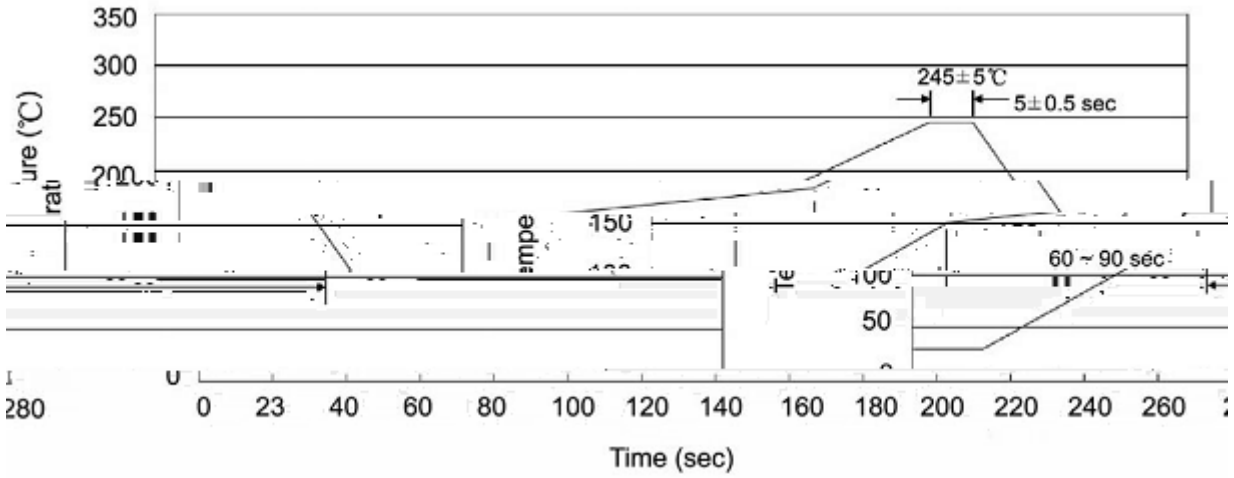
6A

Note:

H: Company Code.

6A: Product Type.

( ) / K\d g\iXk i\`Gif]`Δ`]fi`@`I`]\fn`Jfd` \i`e`^ZGY\$=i\`ž



Note:

- |   |     |     |    |          |   |
|---|-----|-----|----|----------|---|
| 1 | 25  | 150 | 60 | 90sec;   | 1.Preheating:25~150 , Time:60~90sec.    |
| 2 | 245 | 5   | 5  | 0.5sec;  | 2.Peak Temp.:245 5 , Duration:5 0.5sec. |
| 3 |     |     | 2  | 10 /sec. | 3. Cooling Speed: 2~10 /sec.            |

/ Resistance to Soldering Heat Test Conditions

260 5                      10 1 sec.                      Temp.:260±5                      Time:10±1 sec

/ Packaging SPEC.

/ REEL

Package Type	Units					Dimension (unit mm <sup>3</sup> )		
	Units/Reel	Reels/Inner Box	Units/Inner Box	Inner Boxes/Outer Box	Units/Outer Box	Reel	Inner Box	Outer Box
SOT-323	3,000	10	30,000	6	180,000	7 ×8	180×120×180	390×385×205

/ Notices