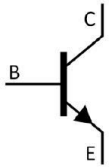


TO-92 NPN Silicon NPN transistor in a TO-92 Plastic Package.

h_{FE} 2SA1015
 High voltage and high current, excellent h_{FE} linearity ,low noise ,complementary pair with 2SA1015.

Audio frequency general purpose ,driver stage amplifier applications.



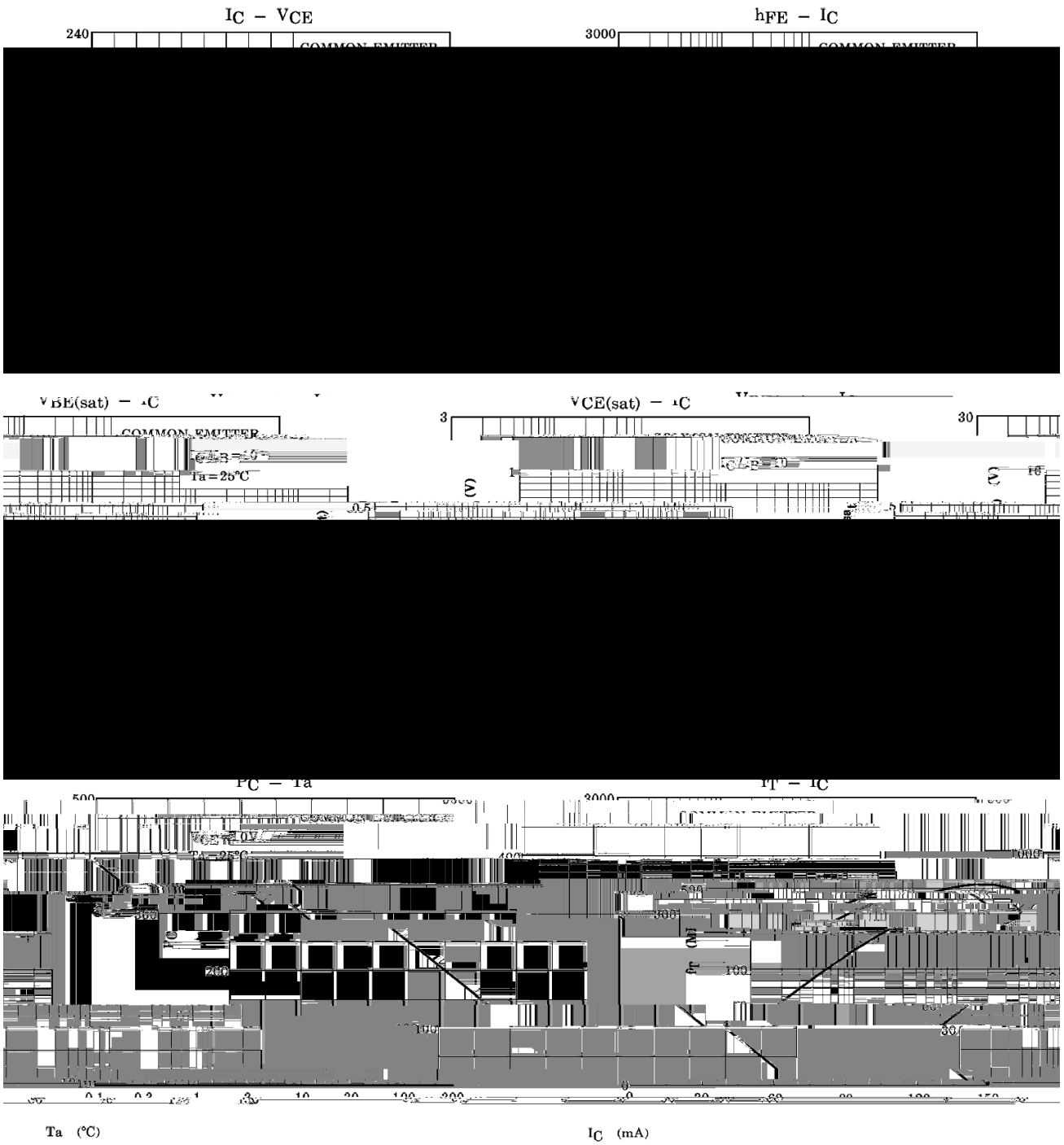
PIN1 Base PIN 2 Collector PIN 3 Emitter

h_{FE} Classifications Symbol	O	Y	GR	BL
h_{FE} Range	70~140	120~240	200~400	350~700

Parameter	Symbol	Rating	Unit
Collector to Base Voltage	V_{CBO}	60	V
Collector to Emitter Voltage	V_{CEO}	50	V
Emitter to Base Voltage	V_{EBO}	5.0	V
Collector Current - Continuous	I_C	150	mA
Base Current - Continuous	I_B	50	mA
Collector Power Dissipation	P_C	400	mW
Junction Temperature	T_j	150	
Storage Temperature Range	T_{stg}	-55 150	

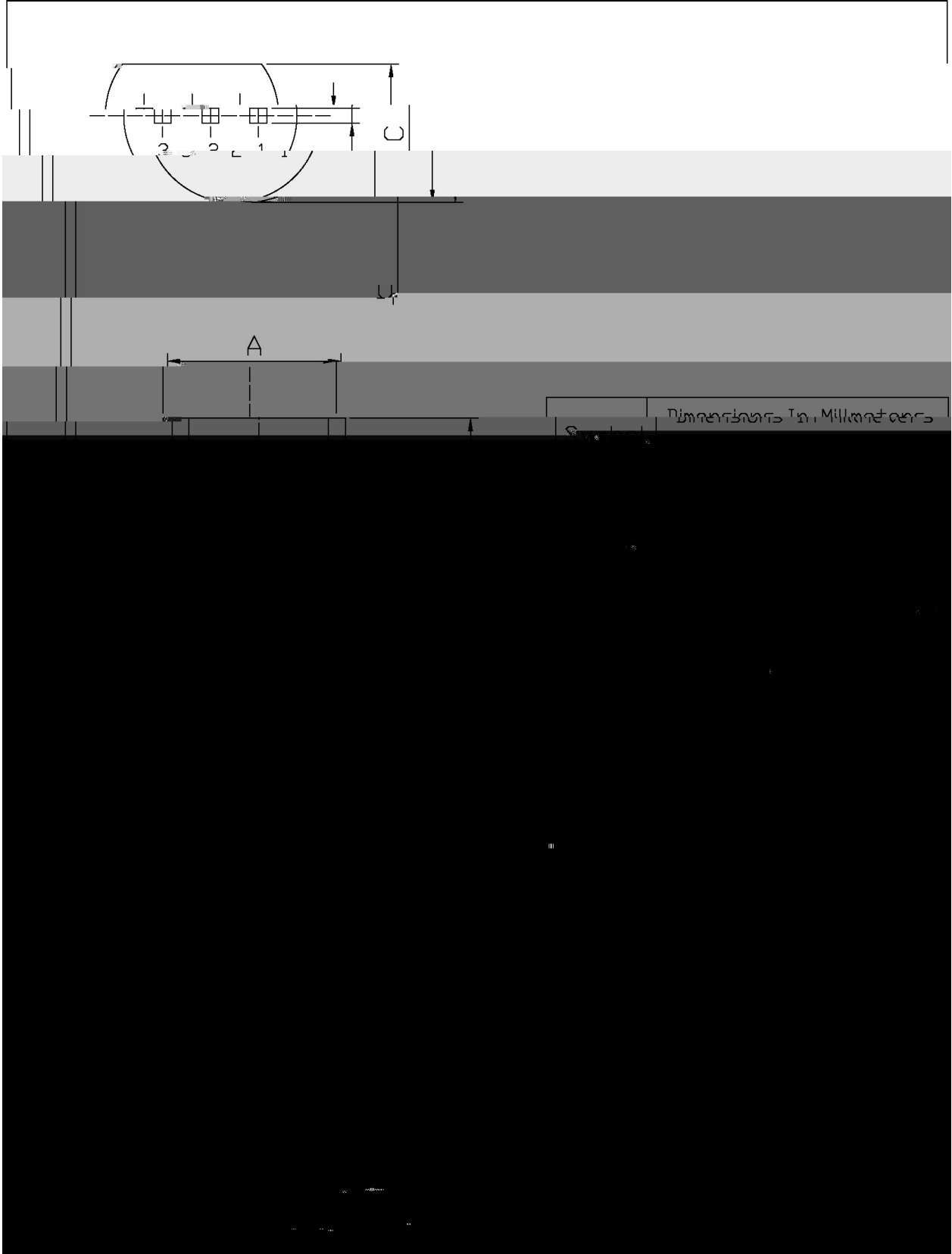
Parameter	Symbol	Test Conditions	Min	Typ	Max	Unit
Collector to Base Breakdown Voltage	V_{CBO}	$I_C=100\text{ A}$ $I_E=0$	60			V
Collector to Emitter Breakdown Voltage	V_{CEO}	$I_C=500\text{ A}$ $I_B=0$	50			V
Emitter to Base Breakdown Voltage	V_{EBO}	$I_E=100\text{ A}$ $I_C=0$	5.0			V
Collector Cut-Off Current	I_{CBO}	$V_{CB}=60V$ $I_E=0$			0.1	A
Emitter Cut-Off Current	I_{EBO}	$V_{EB}=5.0V$ $I_C=0$			0.1	A
DC Current Gain	$h_{FE(1)}$	$V_{CE}=6.0V$ $I_C=2.0mA$	70	.46	484.08	

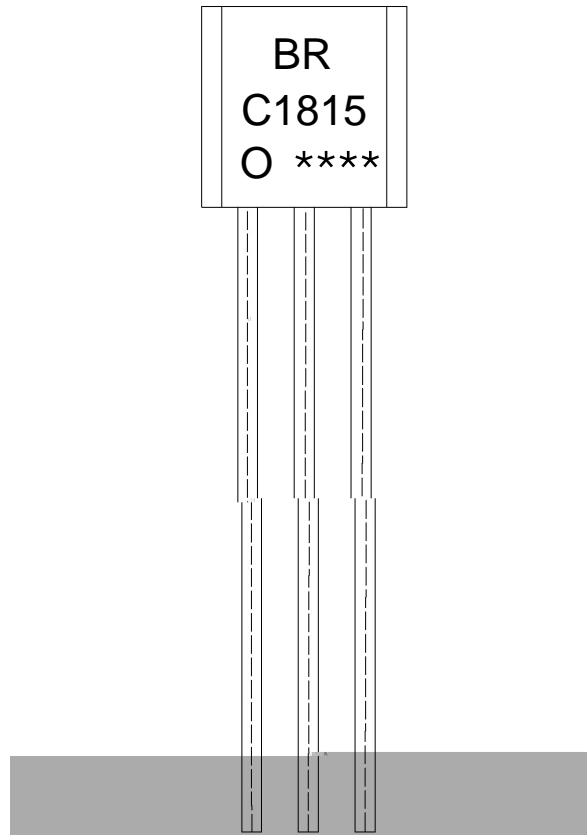
0.479BT



T0-92

Unit: mm





BR:

C1815

O: h_{FE}

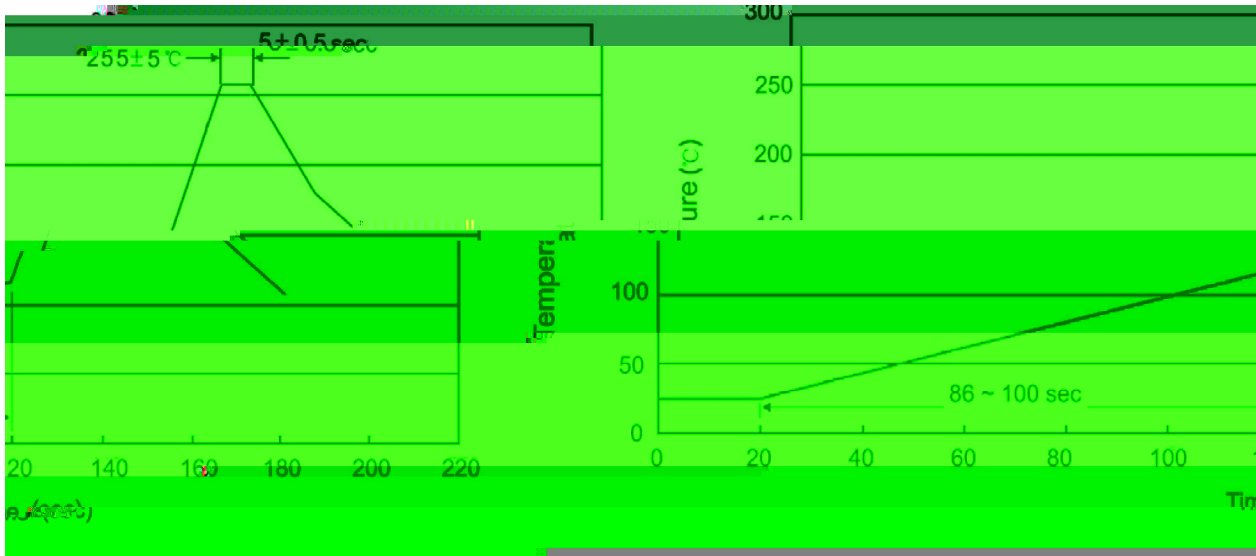
Note:

BR: Company Code.

C1815: Product Type.

O: h_{FE} Classifications Symbol

****: Lot No. Code,code change with Lot No.



Note:

- | | | | | | |
|---|-------|-----|-----------|--------|--|
| 1 | 25 | 150 | 60 | 90sec; | 1. Preheating: 25~150 , Time: 60~90sec. |
| 2 | 255±5 | | 5±0.5sec; | | 2. Peak Temp.: 255±5 , Duration: 5±0.5sec. |
| 3 | | 2 | 10 | /sec. | 3. Cooling Speed: 2~10 /sec. |

 270 ± 5
 10 ± 1 sec.

 Temp: 270 ± 5

 Time: 10 ± 1 sec

/ BULK

Package Type	Units					Dimension (unit mm ³)		
	Units/Bag /	Bags/Inner Box /	Units/Inner Box /	Inner Boxes/Outer Box /	Units/Outer Box /	Bag	Inner Box	Outer Box
TO-92	1,000	10	10,000	5	50,000	135×190	237×172×102	560×245×195
	1,000	10	10,000	10	100,000	135×190	237×172×102	560×245×375

"

%