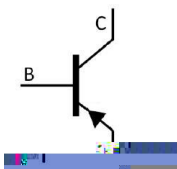


/ Descriptions

/ Features

/ Applications

/ Equivalent Circuit



/ Pinning



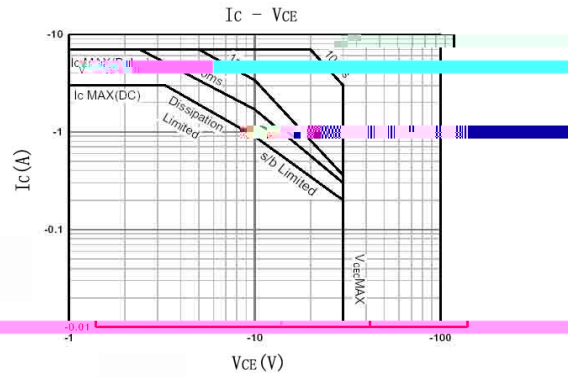
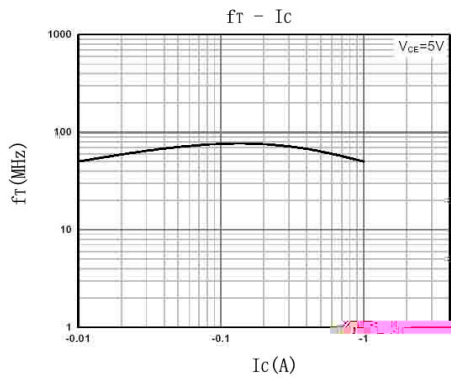
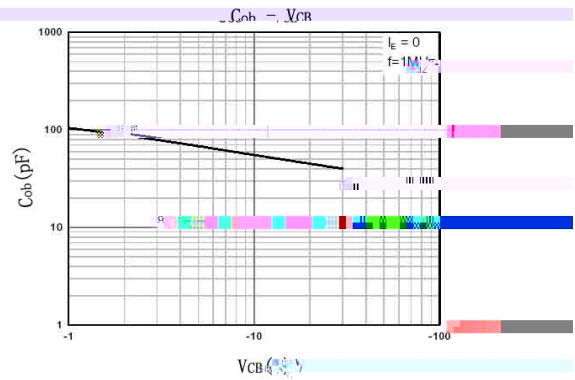
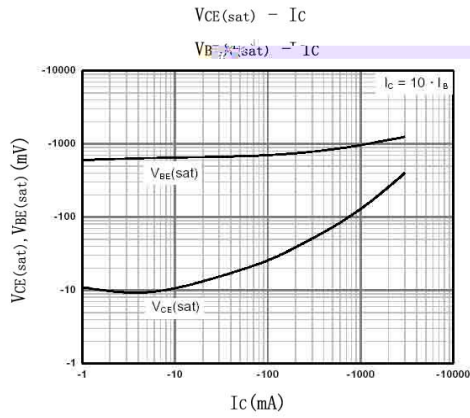
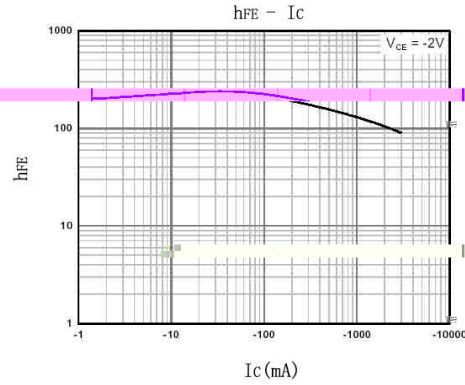
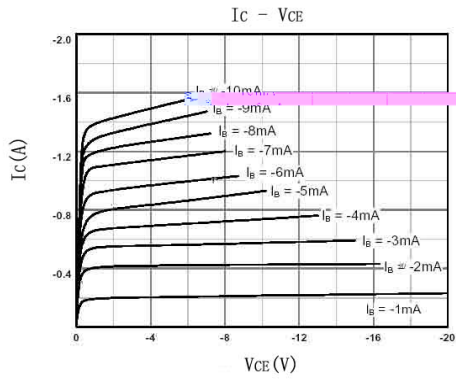
/  $h_{FE}$  Classifications & Marking


**/ Absolute Maximum Ratings(Ta=25 )**


**/ Electrical Characteristics(Ta=25 )**

						μ
						μ

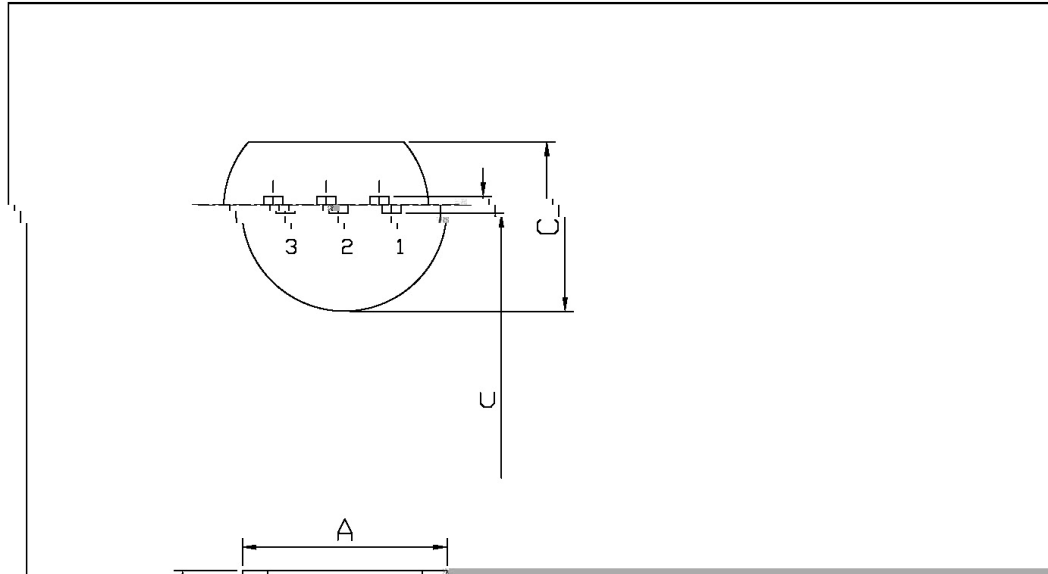
/ Electrical Characteristic Curve



/ Package Dimensions

TO-92LM

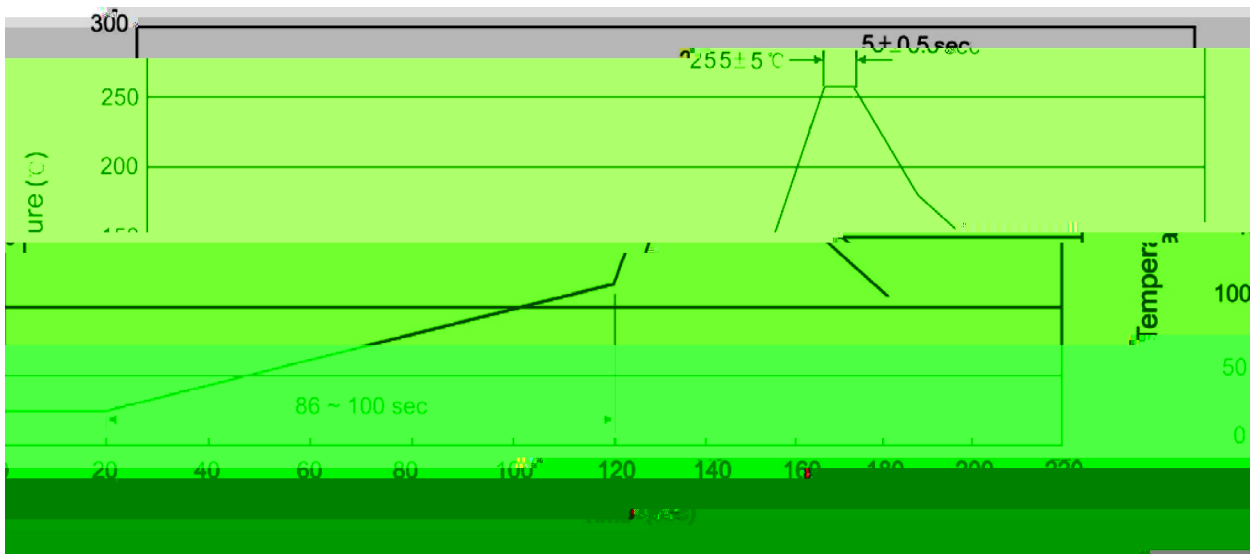
Unit: mm



Symbol	Dimensions In Millimeters	
	Min	Max
A	4.47	5.1
C	1.27	1.52
U	2.54	3.05
a	0.25	0.50
E	0.50	0.75
E1	0.25	0.50



( ) / Temperature Profile for Dip Soldering(Pb-Free)



/ Resistance to Soldering Heat Test Conditions